



South West Regional Transfusion Committee

RTC DATABASE

April 2018 – March 2019

Dedicated Tx Sessions

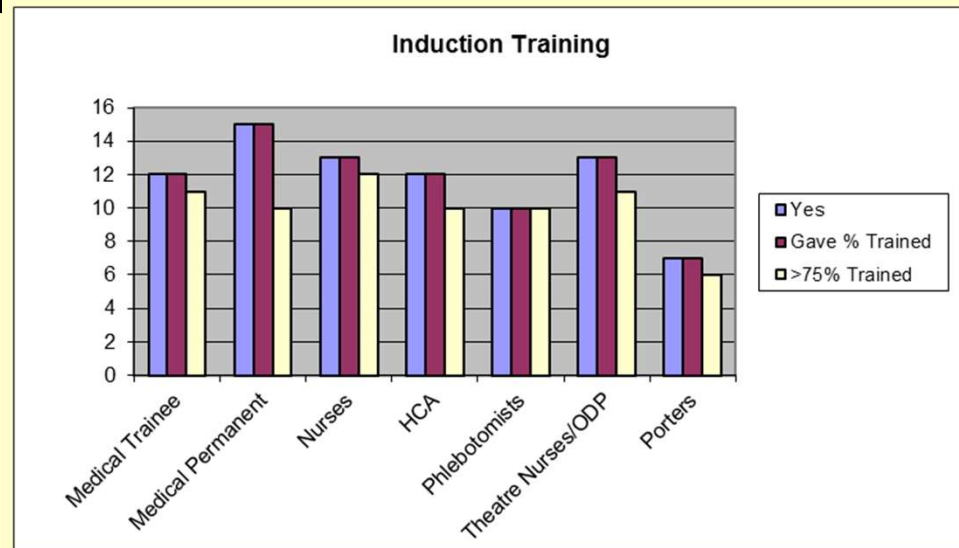
- HTC Chair
 - 5 shared sessions with the role of CH for Tx
- CH for Tx – 12 with sessions
 - 5 CH for Tx with no sessions
- TLM – range between 0-10
- TP – range between 1-20

HTC Attendance By Specialty

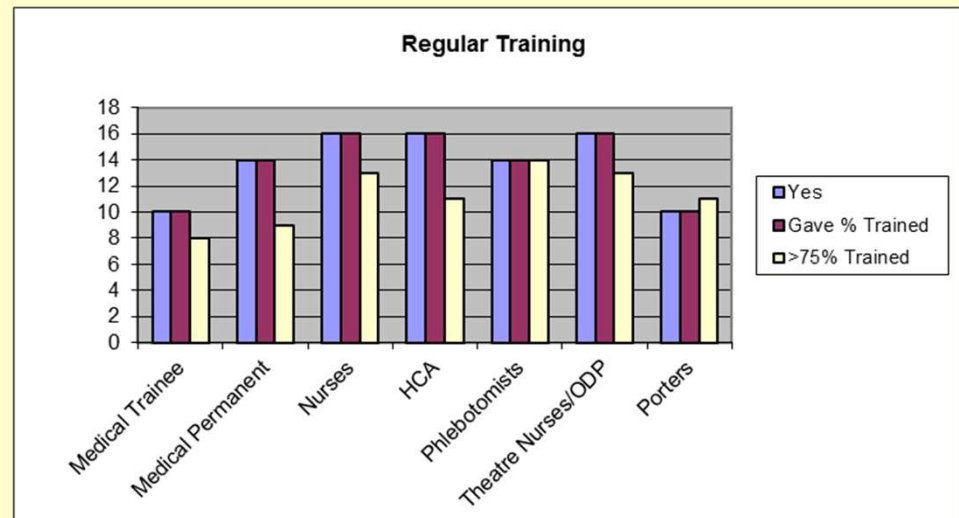
	Always	Frequently	Sometimes	Never
Medicine (excl. Haematology)	1	2	10	4
Haematology	15	1	1	0
Anaesthetics	10	3	4	0
Obs & Gynae	0	6	9	2
Surgery	2	2	8	5
Orthopaedics	1	3	6	7
Emergency Department	0	6	6	5
Clinical Governance	3	4	4	6

Make Transfusion Safer - update

Induction Training
(17 hospitals provided
data)



Regular Training
(17 hospitals provided
data)



Laboratory Information

16/17 CPA/UKAS compliant

17/17 NEQAS compliant

LIMS System Supports Electronic Dispatch Note

	<300	300-800	>800
Yes	3	7	3
No	1	1	2

If Yes, do you use EDN

Yes	3	6	3
No	0	1	0

Electronic / Radiofrequency technology throughout tx process

	<300	300-800	>800
Yes	1	3	2
No	3	5	3

Electronic Issue

2011	81% (17 out of 21)
2012	79% (15 out of 19)
2013	79% (15 out of 19)
2014	84% (16 out of 19)
2015	89% (16 out of 18)
2016	90% (18 out of 20)
2017	90% (18 out of 20)
2018	89% (16 out of 18)
2019	88% (15 out of 17)

Electronic Pathology Requesting

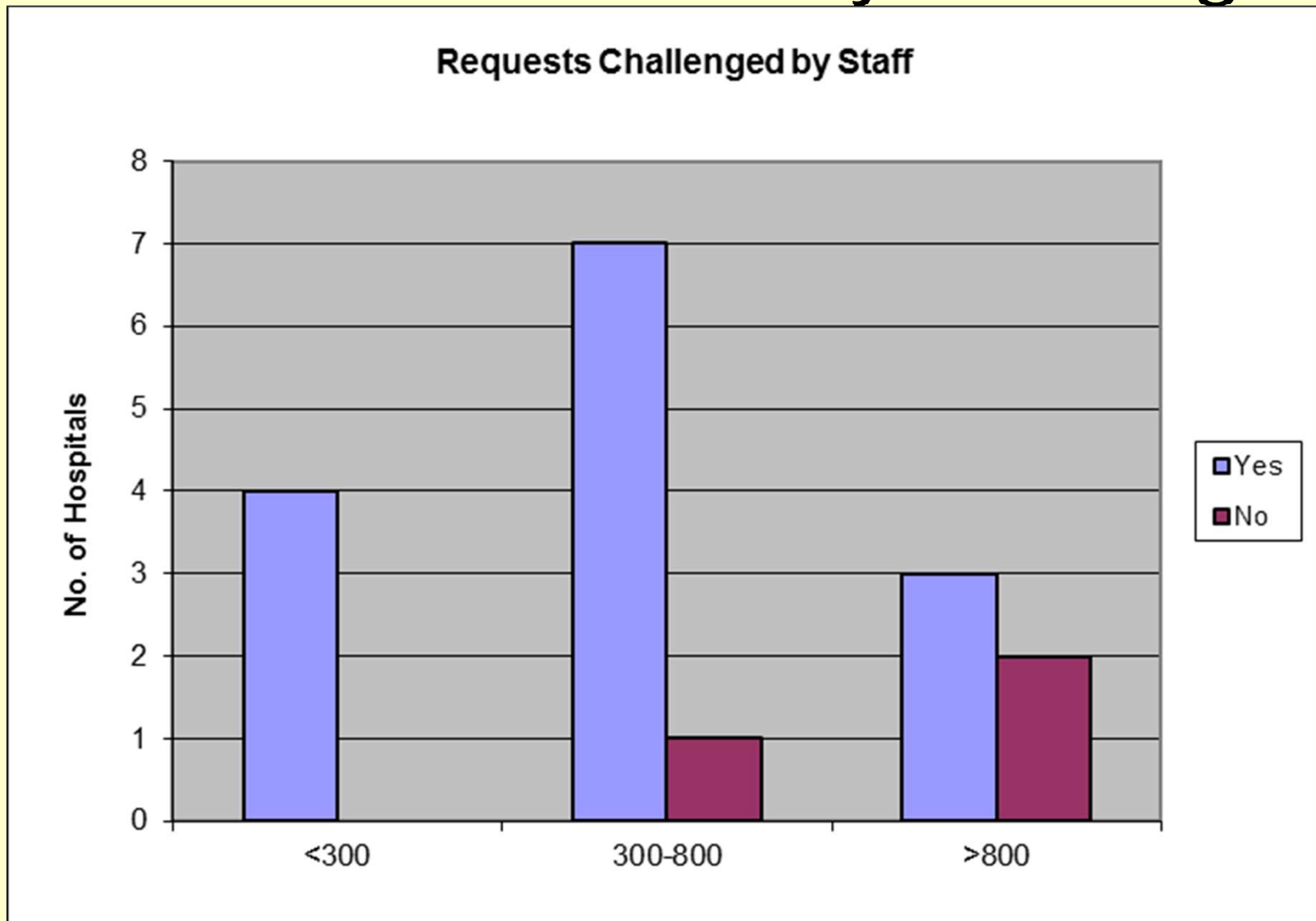
Group & Save

2016	25% (5 out of 20)
2017	35% (7 out of 20)
2018	22% (4 out of 18)
2019	18% (3 out of 17)

Crossmatch

2016	10% (2 out of 20)
2017	25% (5 out of 20)
2018	11% (2 out of 18)
2019	18% (3 out of 17)

Request for Transfusion where indication unclear usually challenged

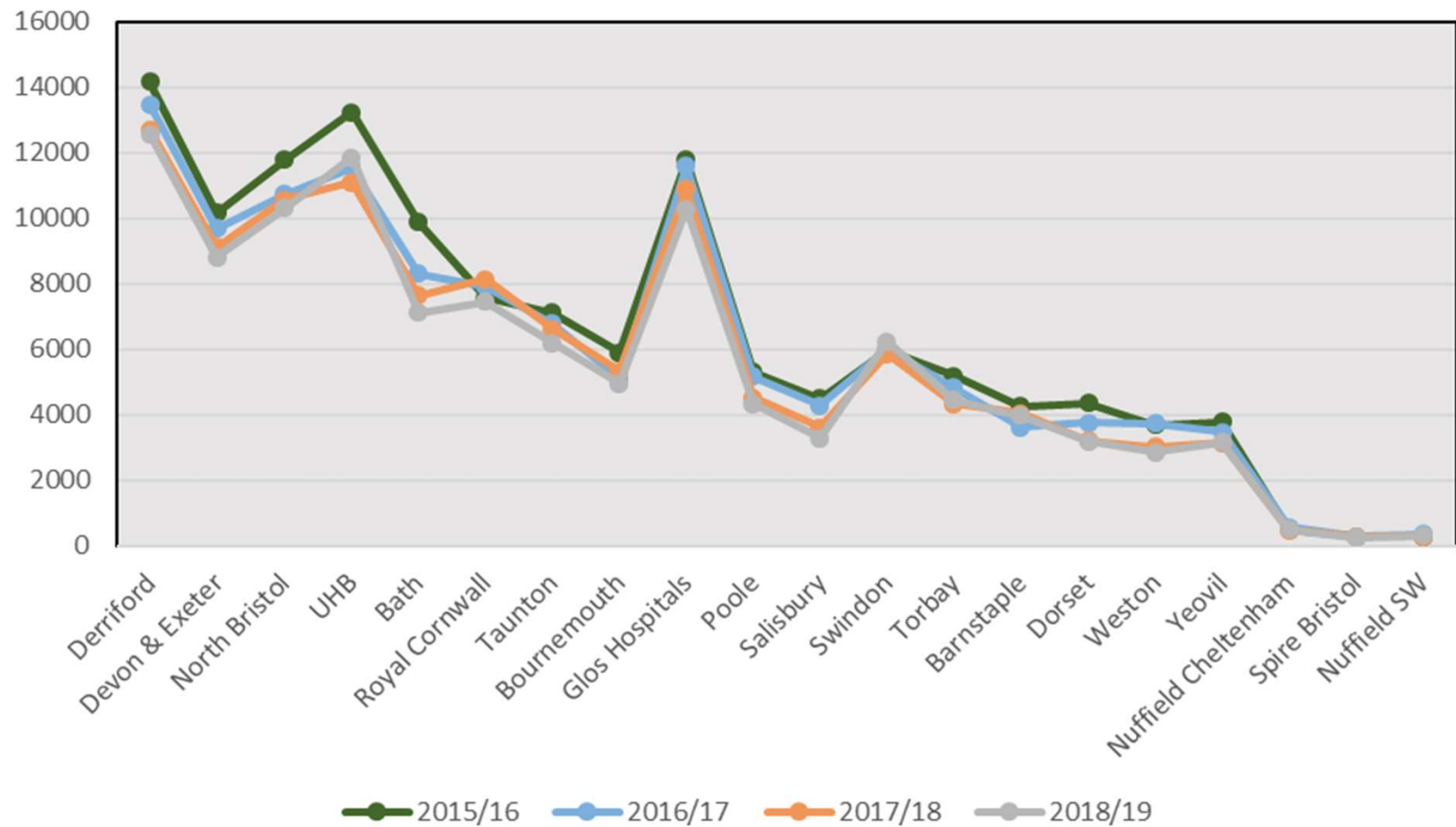


Single unit red cell transfusions as a percentage of all red cell transfusion episodes:

UHB	75%
Derriford	70%
Bournemouth	49%
Salisbury	47%
Spire Bristol	47%
Swindon	47%
Nuffield SW	40%
RUH	33%
Poole	32%
Dorset	13%

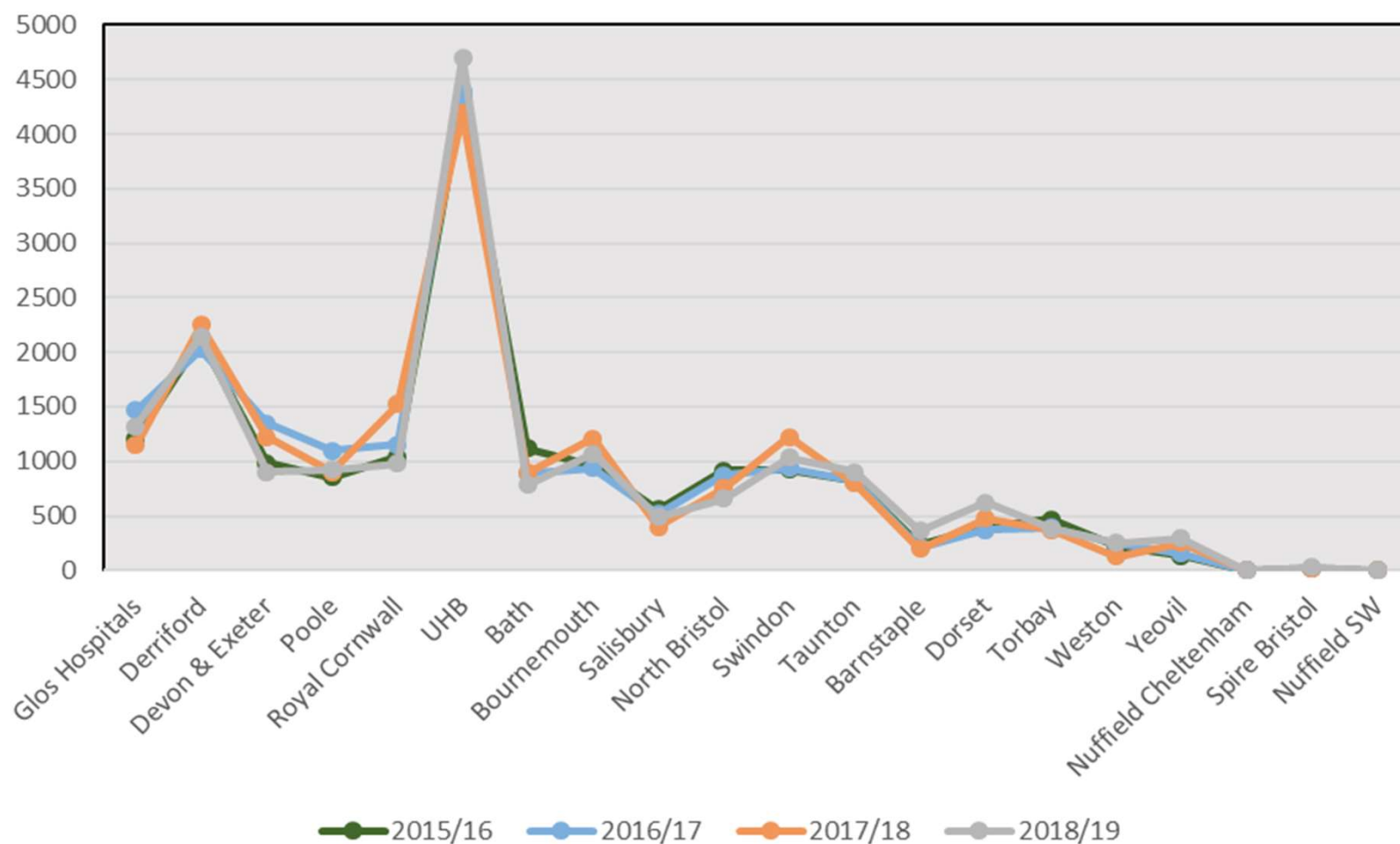
RBC Issues

RBC Issues to hospitals in the SW RTC region for the last four financial years



Platelet Issues

Platelet issues to hospitals in the SW RTC region for the last four financial years



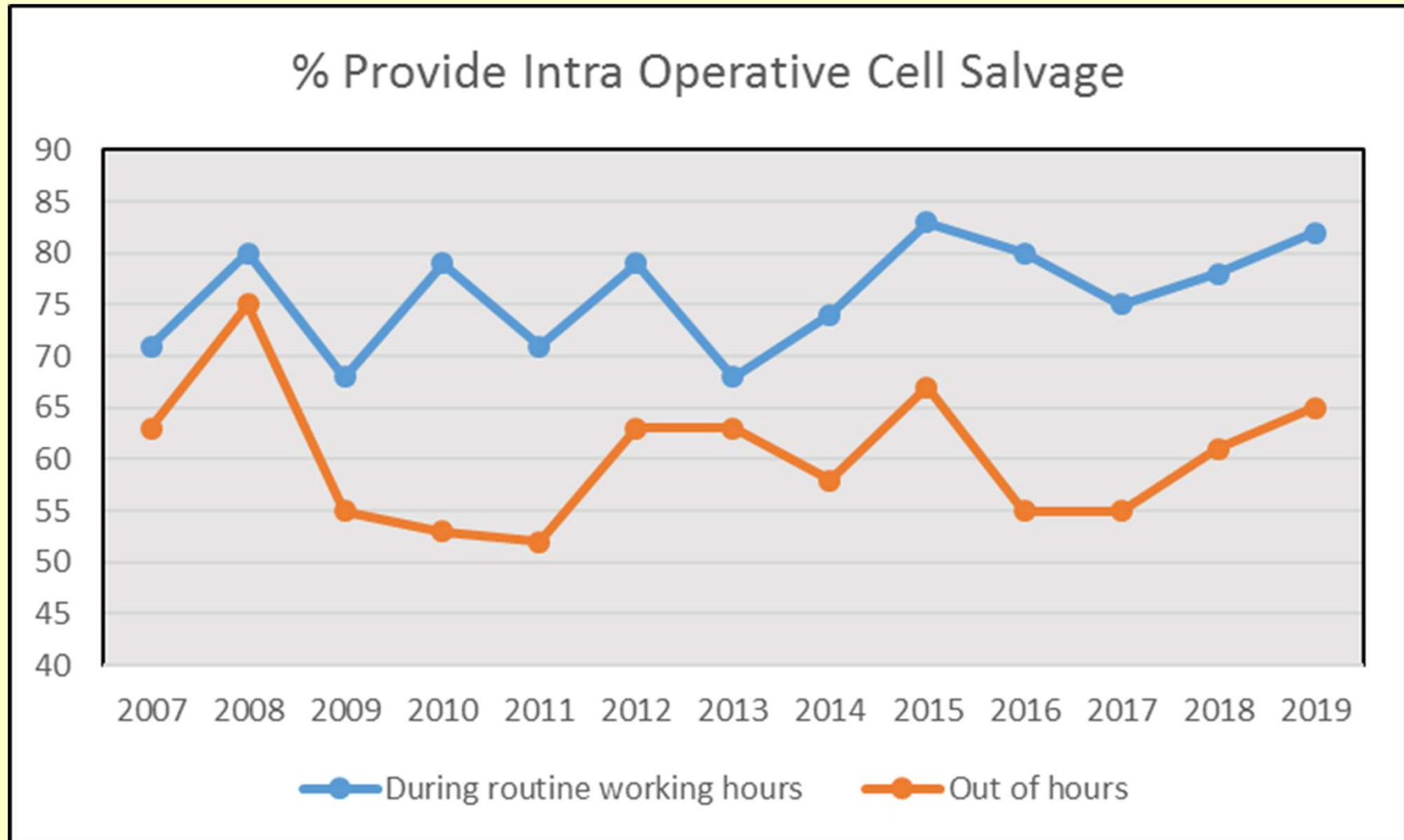
General Patient Blood Management

	Yes	No	NG
Depts use EPO as alternative to tx	10	7	
Trust has tx triggers	16	1	
Are these in line with NBTC codes	14	1	1
Guidelines incorporate single unit use	17		

Surgical Patient Blood Management

	Pre-Operative Assessment		Provide Point of Care Testing	
	Identify & Treat Anaemia	Provide Information Leaflets	Identification of Hb	Measurement of clotting parameters
Trustwide	16/17	17/17	9/17	7/17
Specific Departments	1/1	-	8/8	6/10

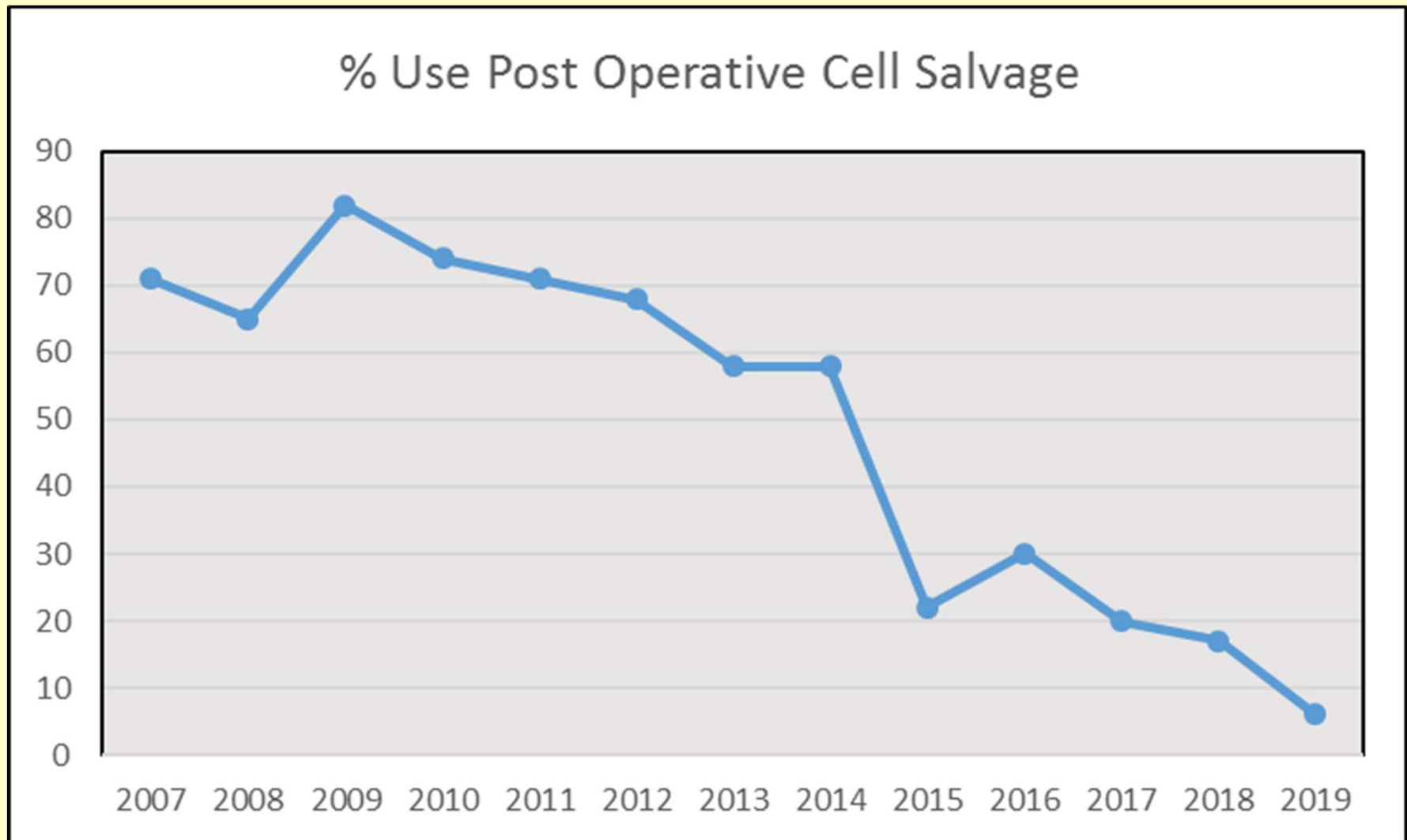
Intra-Operative Cell Salvage



Is Tranexamic Acid used:

YES: 17/17

Post Operative Cell Salvage



Medical Patient Blood Management

	Identify & Treat Anaemia	Provide Information Leaflets
Trustwide	7/17	16/17
Specific Department algorithm	5/10	1/1

Use of rFVIIa

Hospital Stocks		2007	2008	2009	2010	2011	2012	2013	2014	2015	2016	2017	2018	2019
		13	14	14	14	13	13	12	13	13	11	12	8	8
Haemophilia	1-5	10	9	11	7	6	6	7	10	9	4	5	3	5
	6-10	0	1	0	0	1	1	1	1	1	3	1	2	2
	>10	2	2	1	2	3	2	1	1	2	1	4	1	-
Non-Haemophilia	1-5	12	11	11	12	12	12	10	9	10	9	9	5	6
	6-10	2	3	2	1	0	0	0	0	0	3	1	0	-
	>10	1	1	2	0	0	1	1	1	1	0	0	0	-

PCC - all hospitals stock and none said did not use

Obstetric Practice (NHS Hospitals Only)

All hospitals (15/15) gave a Single Dose 28 – 30 weeks

% Issued Traceable to Named Patient

- 9 - 100%
- 6 - $\geq 95\%$

13/15 hospitals had a Strategy/Policy to identify and treat maternal Anaemia

1/2 hospitals policy is written and awaiting ratification before going live

Summary

- Participation 15/17 NHS & 2/3 private hospitals (17/20)
- Structure –
 - All hospitals have HTT
 - In 5 NHS hospitals CH has no dedicated sessions
 - HTC attendance – haematology & anaesthetics good, medicine, surgery & orthopaedics poor
- Regular training – 9 hospitals achieved >75% for permanent medical staff
- Electronic-issue 88%, requesting <18%, full/part blood tracking 59%, EDN 71%
- RBC annual issues ↓2.4% platelet issues ↓1.0%
- IOCS stable, post op CS ↓