

Single Unit Blood Transfusion in Acute Haematology Setting

Background

- Results of 2014 red cell survey showed haematology largest users of red cells in the Trust
- Higher usage compared to national data

Specialty	National		National		Taunton & Somerset Hospital		Taunton & Somerset Hospital	
	Cycle 1		Cycle 2		Cycle 1		Cycle 2	
	N	%	N	%	N	%	N	%
Cardiothoracic Surgery	1352	(6.2)	1404	(5.7)
ENT	98	(0.5)	96	(0.4)
Gastrointestinal Surgery	839	(3.9)	925	(3.8)	.	.	1	(0.6)
Neurosurgery including head injury	126	(0.6)	153	(0.6)
Trauma	1046	(4.8)	1147	(4.7)	1	(1.0)	15	(9.2)
Urology	454	(2.1)	488	(2.0)	2	(2.1)	.	.
Solid Organ Transplant	220	(1.0)	266	(1.1)
Vascular Surgery	533	(2.5)	558	(2.3)	4	(4.1)	6	(3.7)
Orthopaedics	975	(4.5)	836	(3.4)	3	(3.1)	2	(1.2)
Plastic Surgery	103	(0.5)	104	(0.4)
Other Surgery	245	(1.1)	350	(1.4)	.	.	2	(1.2)
Obs & Gynae	1294	(6.0)	1396	(5.7)	8	(8.2)	4	(2.5)
Neonatal/Fetal	247	(1.1)	307	(1.3)	1	(1.0)	.	.
GI Bleed	2769	(12.8)	2608	(10.7)	10	(10.3)	32	(19.6)
Non-haematological anaemia	5607	(25.9)	7029	(28.8)	27	(27.8)	48	(29.4)
Haematological	5769	(26.6)	6747	(27.6)	41	(42.3)	53	(32.5)
Not reported	6	(0.0)	14	(0.1)
TOTAL units	21683	(100.0)	24428	(100.0)	97	(100.0)	163	(100.0)

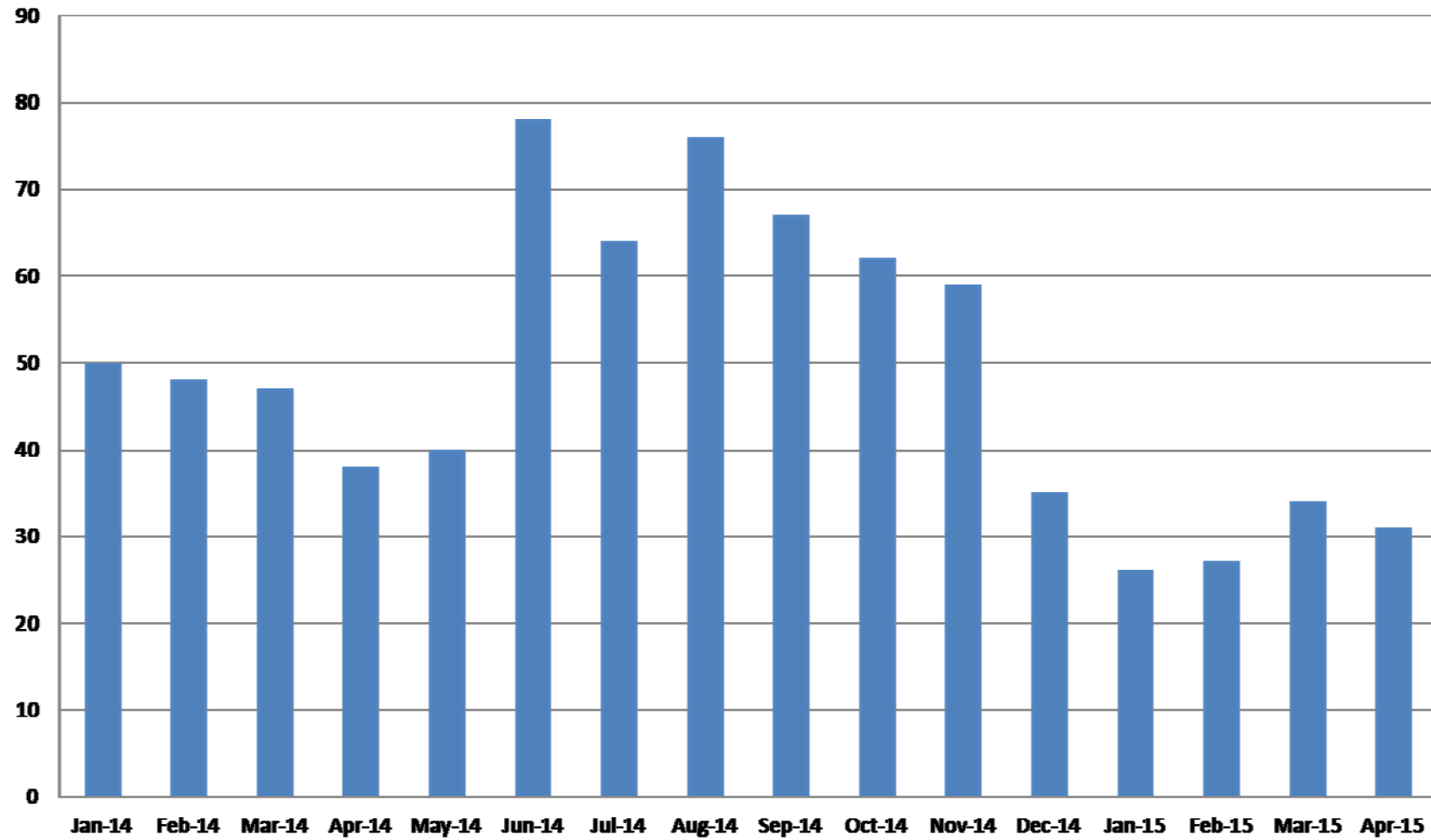
Our guidelines

Commenced January 2015

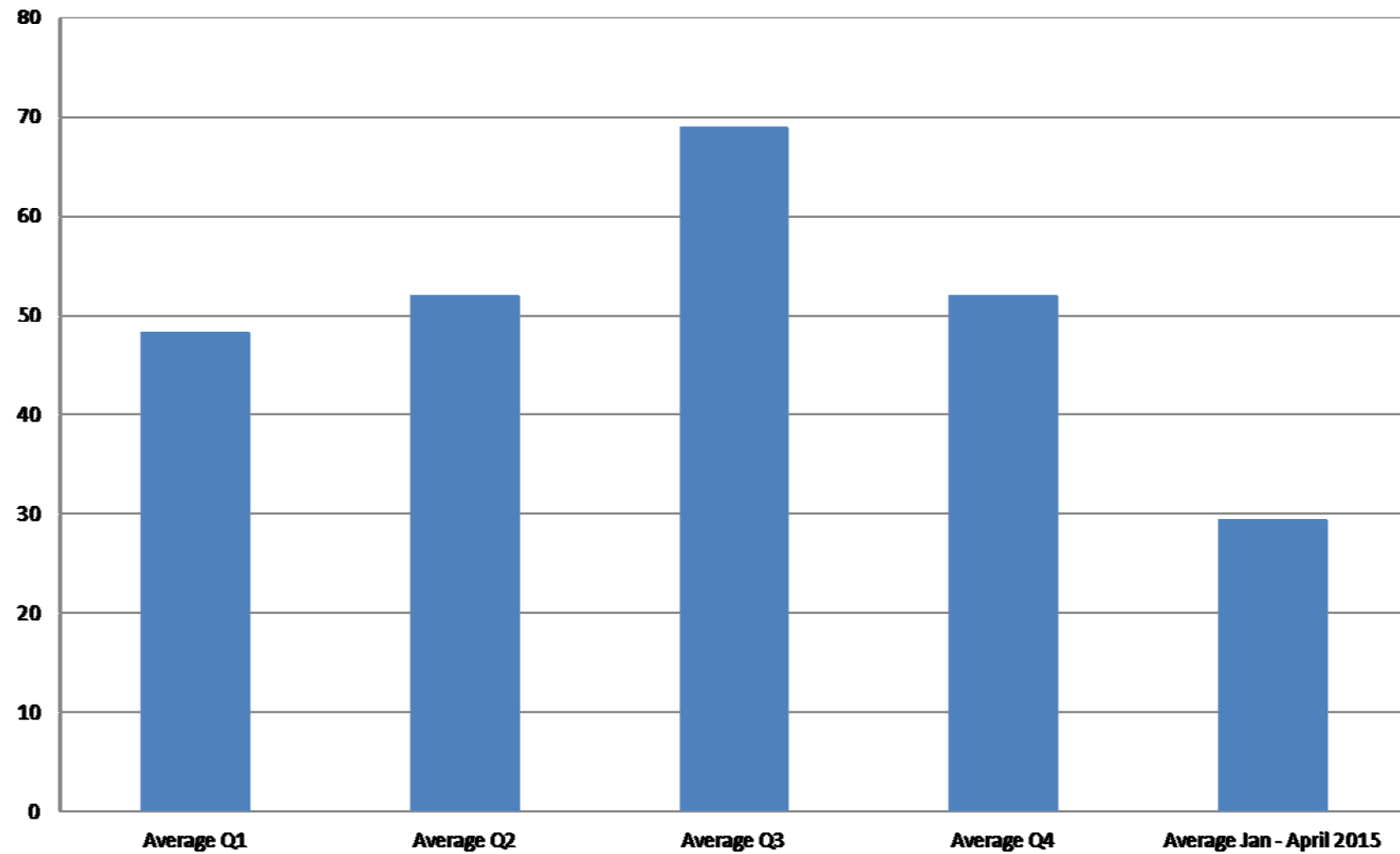
- Patient not actively bleeding
 - Not symptomatic
 - Hb > 80g/l
- *No transfusion required*
- Hb < 80g/l
 - No active bleeding/non-symptomatic
 - *Transfuse 1 unit only*
 - Recheck Hb either at end of transfusion or following morning

The results

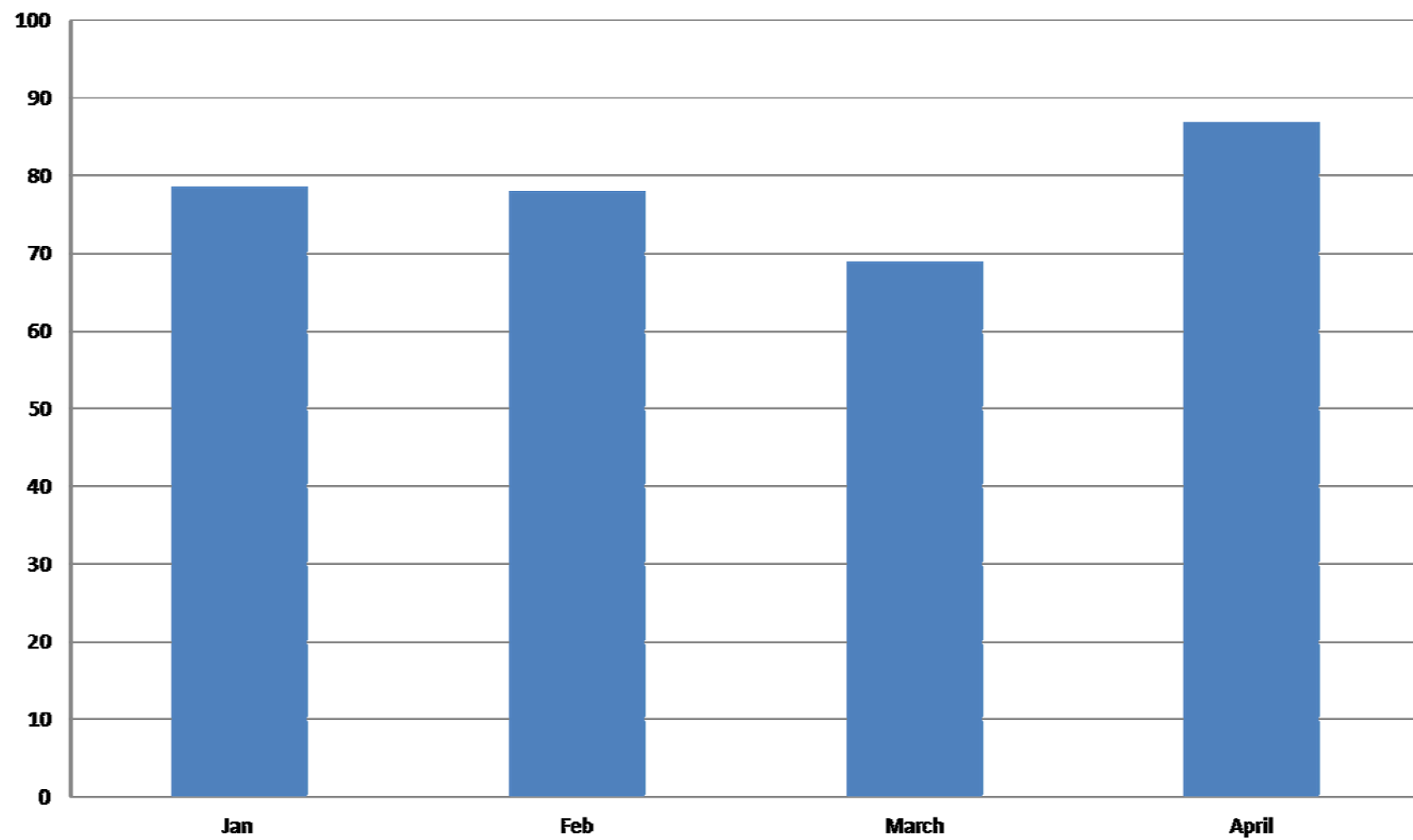
Number of Transfused units on ward 9



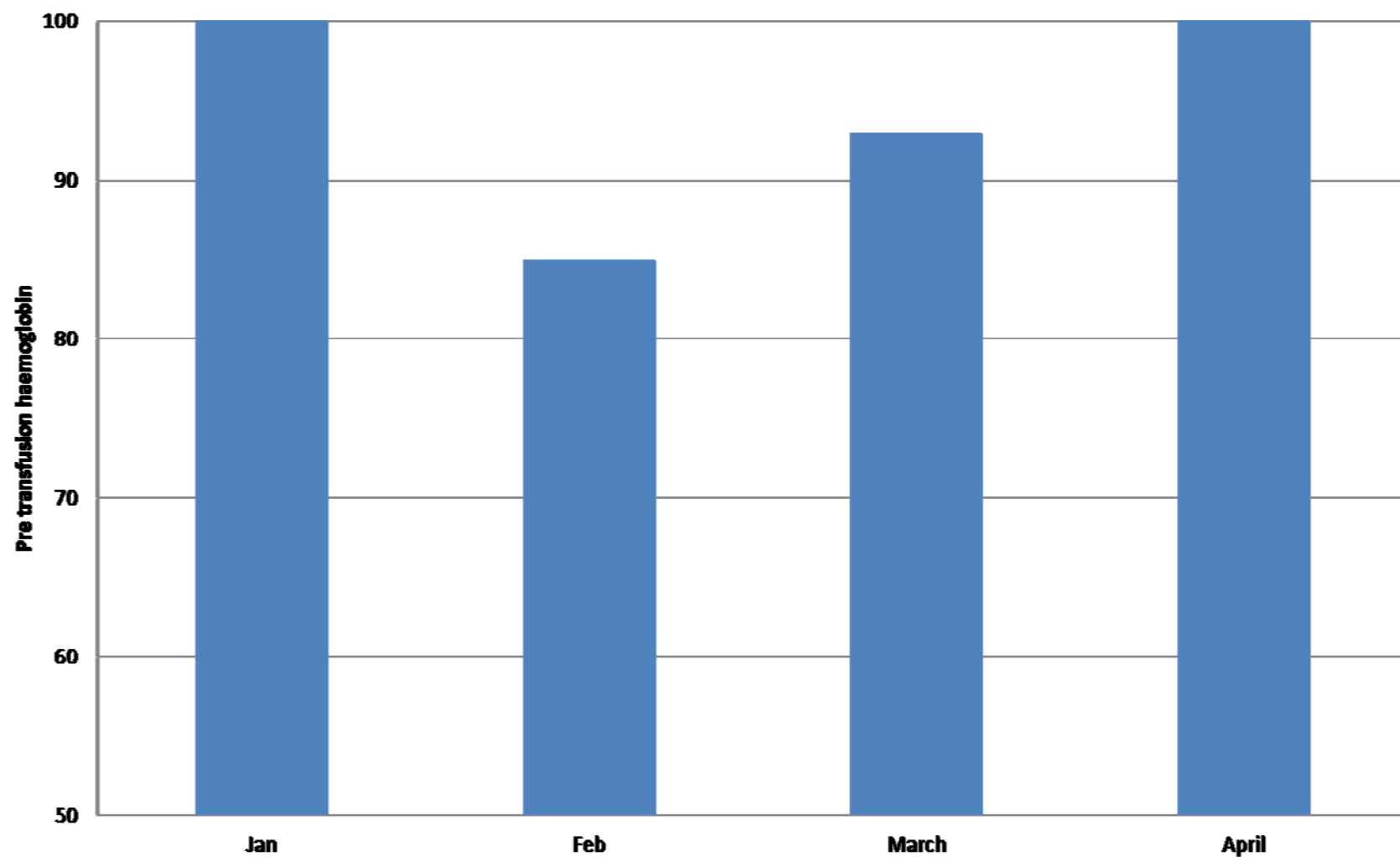
Quarterly average number of transfused unit - Ward 9



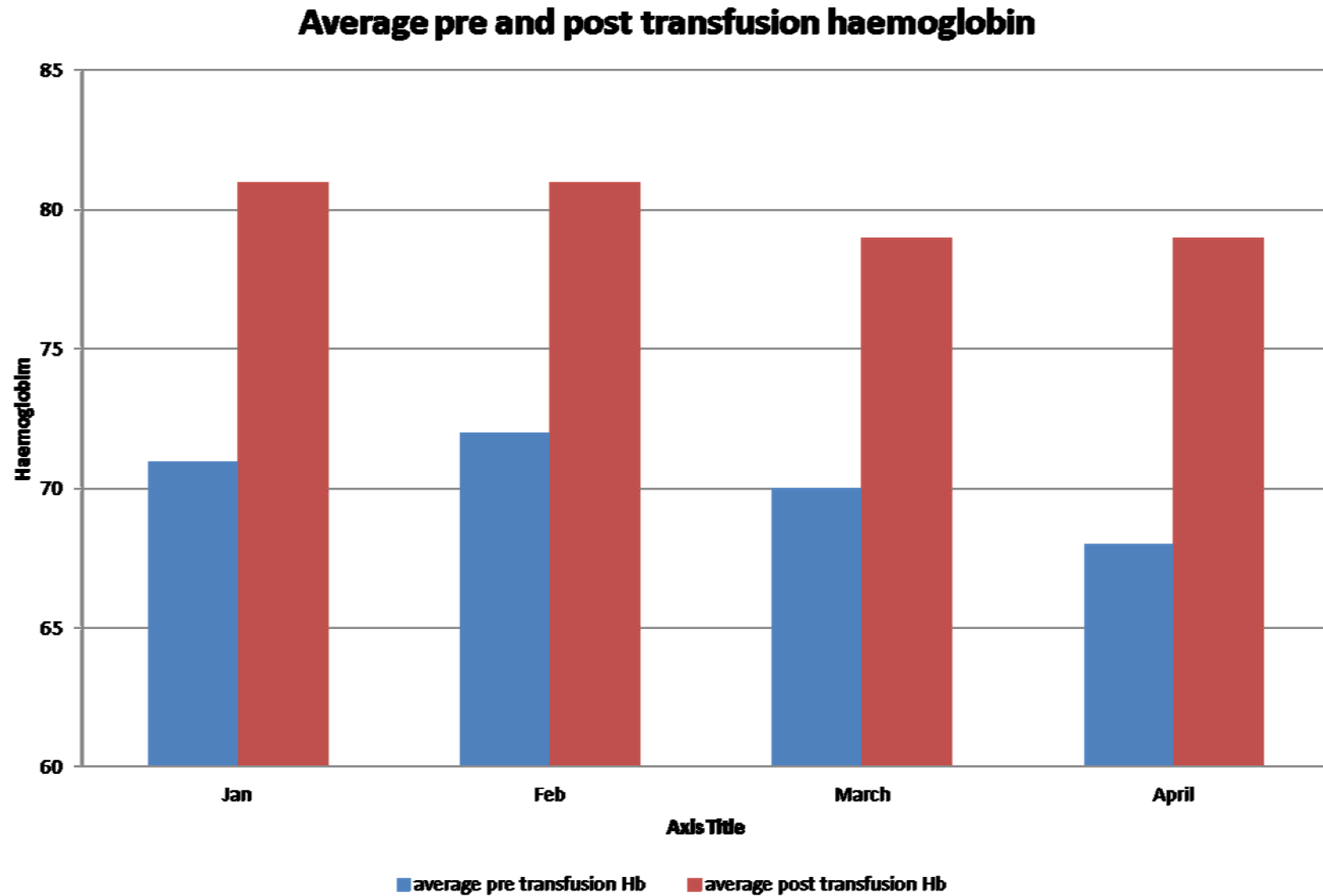
Percentage of single unit transfusions



Percentage of pre-transfusion haemoglobins below 80g/l



[What next?](#)



What have we achieved?

- No reported increased workload for the laboratory
- No reported increased workload for the ward

Our aim was to decrease usage by 20%

We achieved over a 40% reduction since January

Total savings so far £7,000 (Q1)

Potential savings = £28,000

What next?

- Possible reduction of transfusion triggers
 - $<70\text{g/l}$ for non bleeding/ non symptomatic patients
 - [Side 8](#)
 - Look at outpatient transfusion triggers?
 - Other in-patient specialties
 - Post operative
 - Gastroenterology
 - General medicine