



South West Regional Transfusion Committee

RTC DATABASE

April 2013 – March 2014

Dedicated Tx Sessions

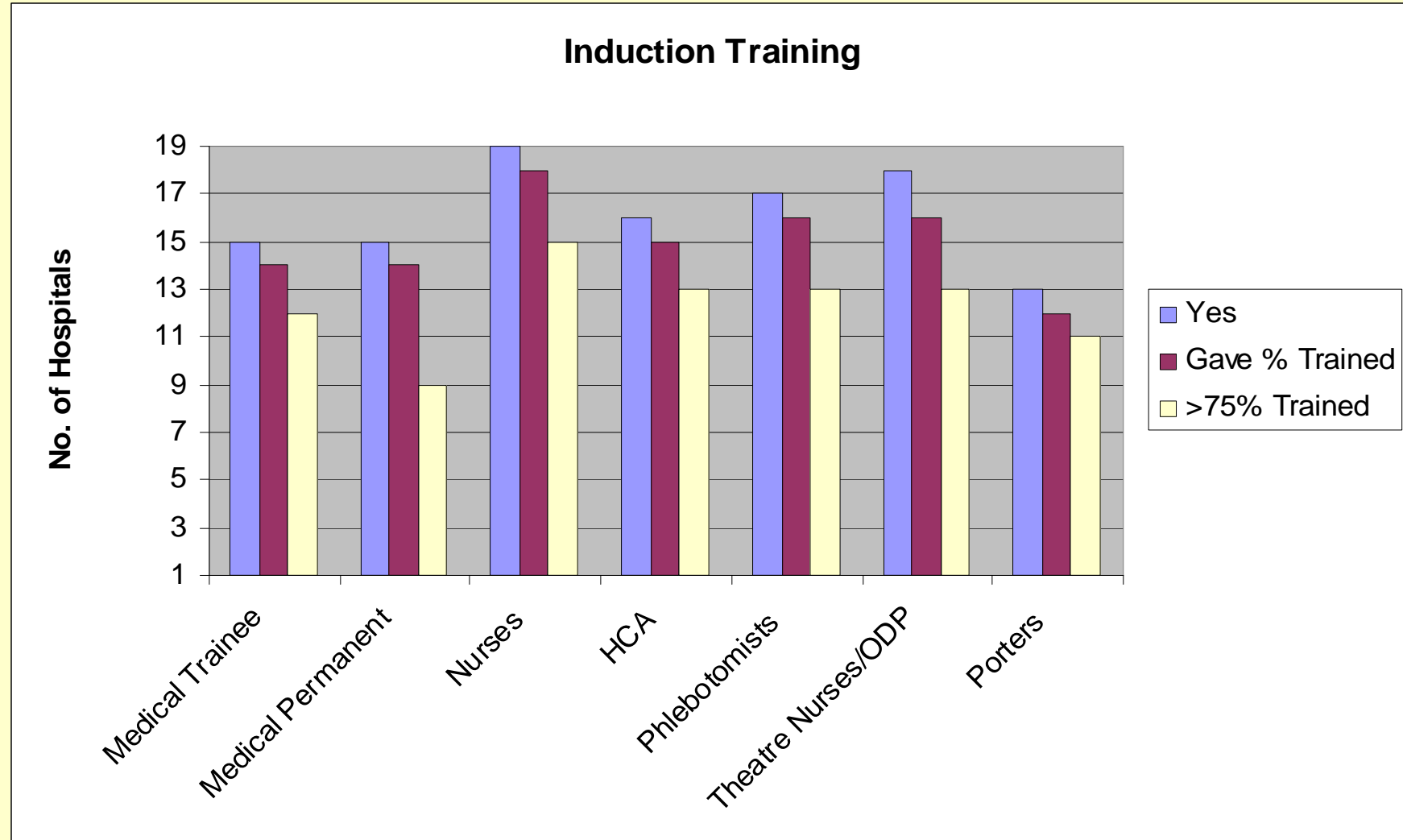
- HTC Chair – 6 shared sessions with the role of CH responsible for Tx
- TLM – range between 2-14, with 10/19 stating 10 - one TLM shared with another Trust
- TP – range between 4-23
- CH for Tx – 5 with no sessions

HTC Attendance By Specialty

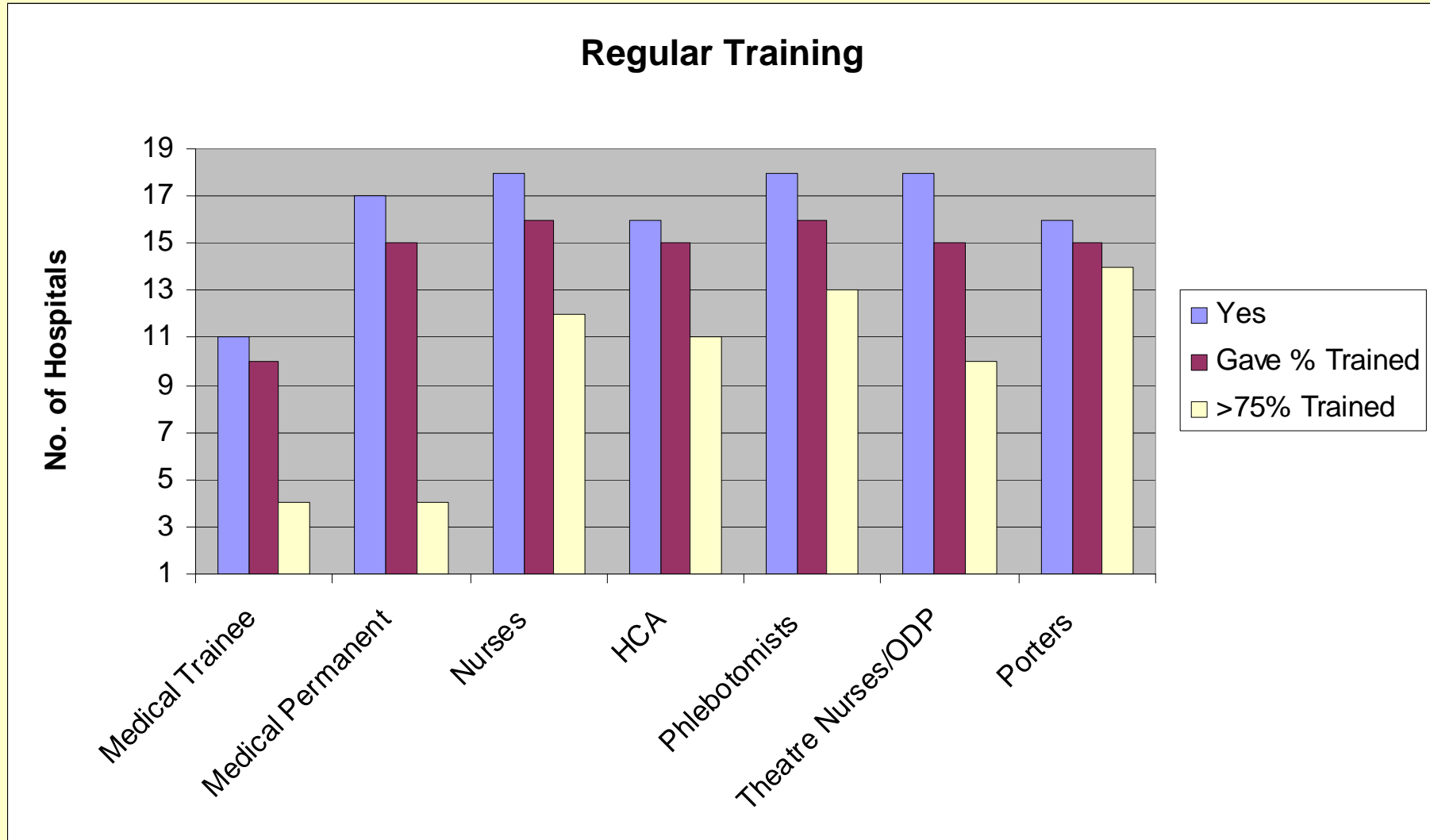
	Always	Frequently	Sometimes	Never	NA
Medicine (excl. Haematology)	3	2	5	9	0
Haematology	16	3	0	0	0
Anaesthetics	12	6	1	0	0
Obs & Gynae	2	9	4	4	0
Surgery	3	4	8	4	0
Orthopaedics	2	5	4	8	0
Emergency Department	0	5	6	6	2
Clinical Governance	5	2	3	9	0

Make Transfusion Safer

Induction Training (19 hospitals provided data)



Regular Training (19 hospitals provided data)



Electronic / Radiofrequency technology throughout tx process

	<300	300-800	>800
Yes	1	5	1
No	3	5	4

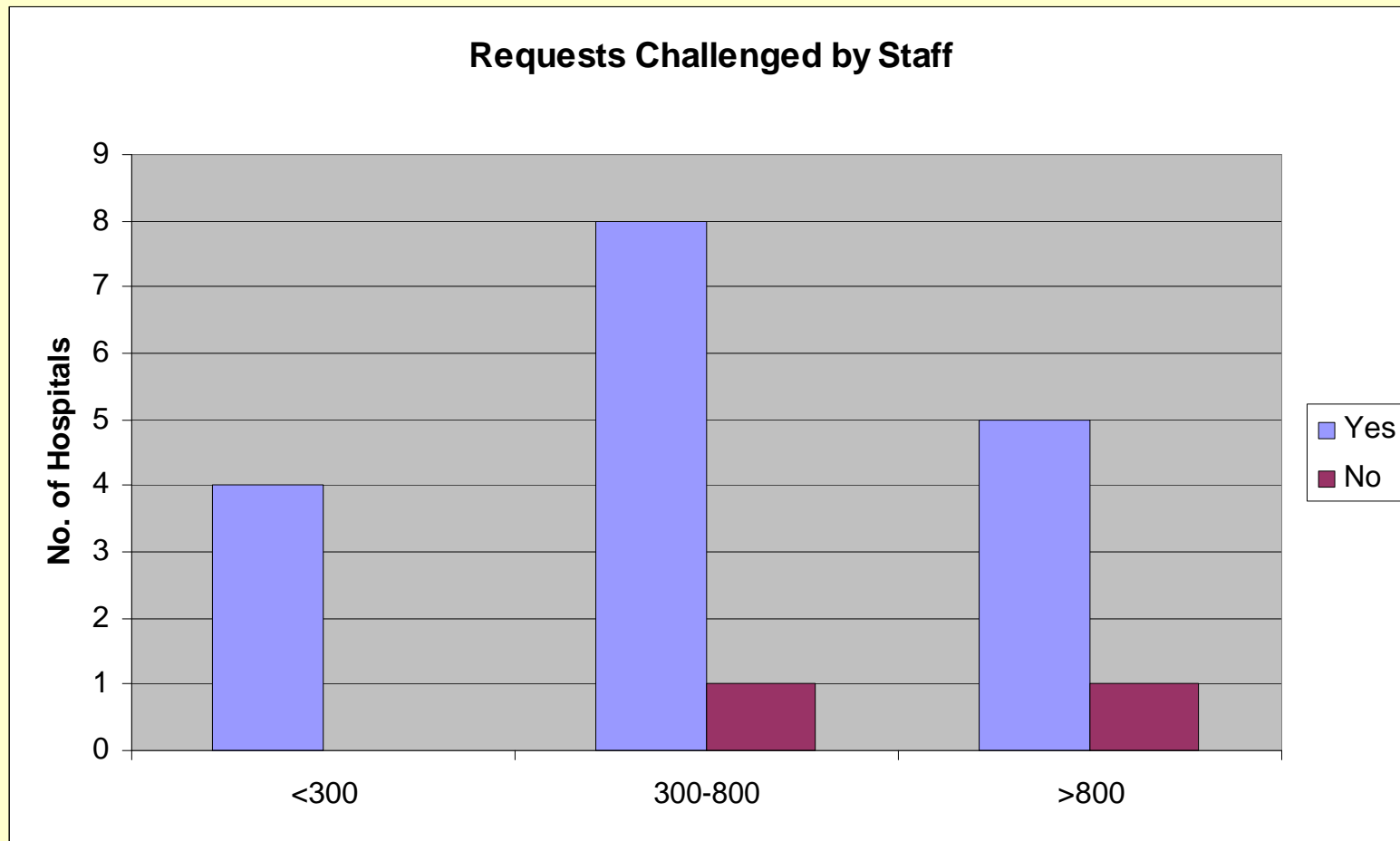
Laboratory Information

All CPA and NEQAS compliant

Electronic Issue

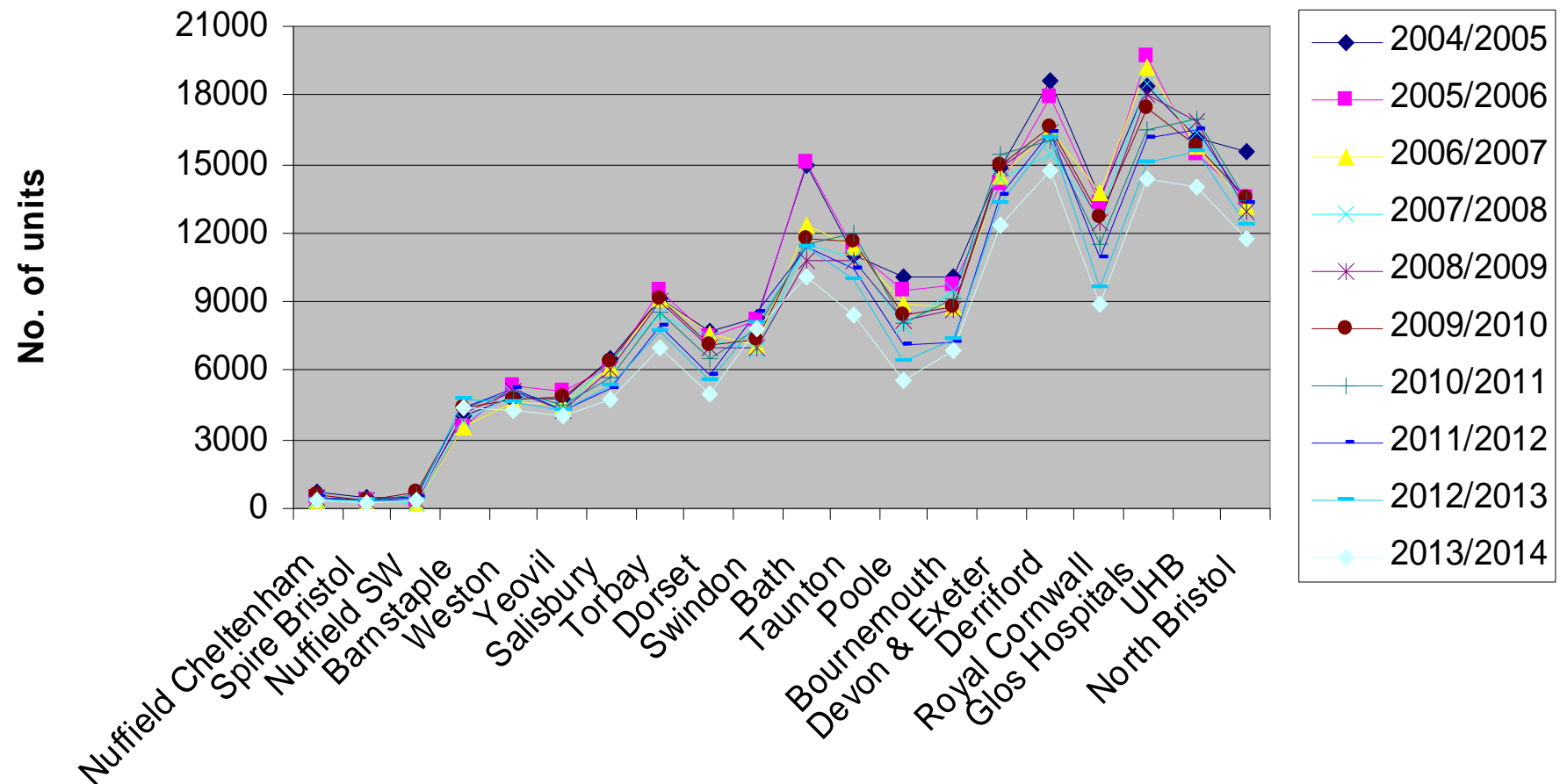
2005	45% (9 out of 20)
2006	49% (11 out of 23)
2007	46% (11 out of 24)
2008	65% (13 out of 20)
2009	68% (15 out of 22)
2010	74% (14 out of 19)
2011	81% (17 out of 21)
2012	79% (15 out of 19)
2013	79% (15 out of 19)
2014	84% (16 out of 19)

Request for Transfusion where indication unclear usually challenged



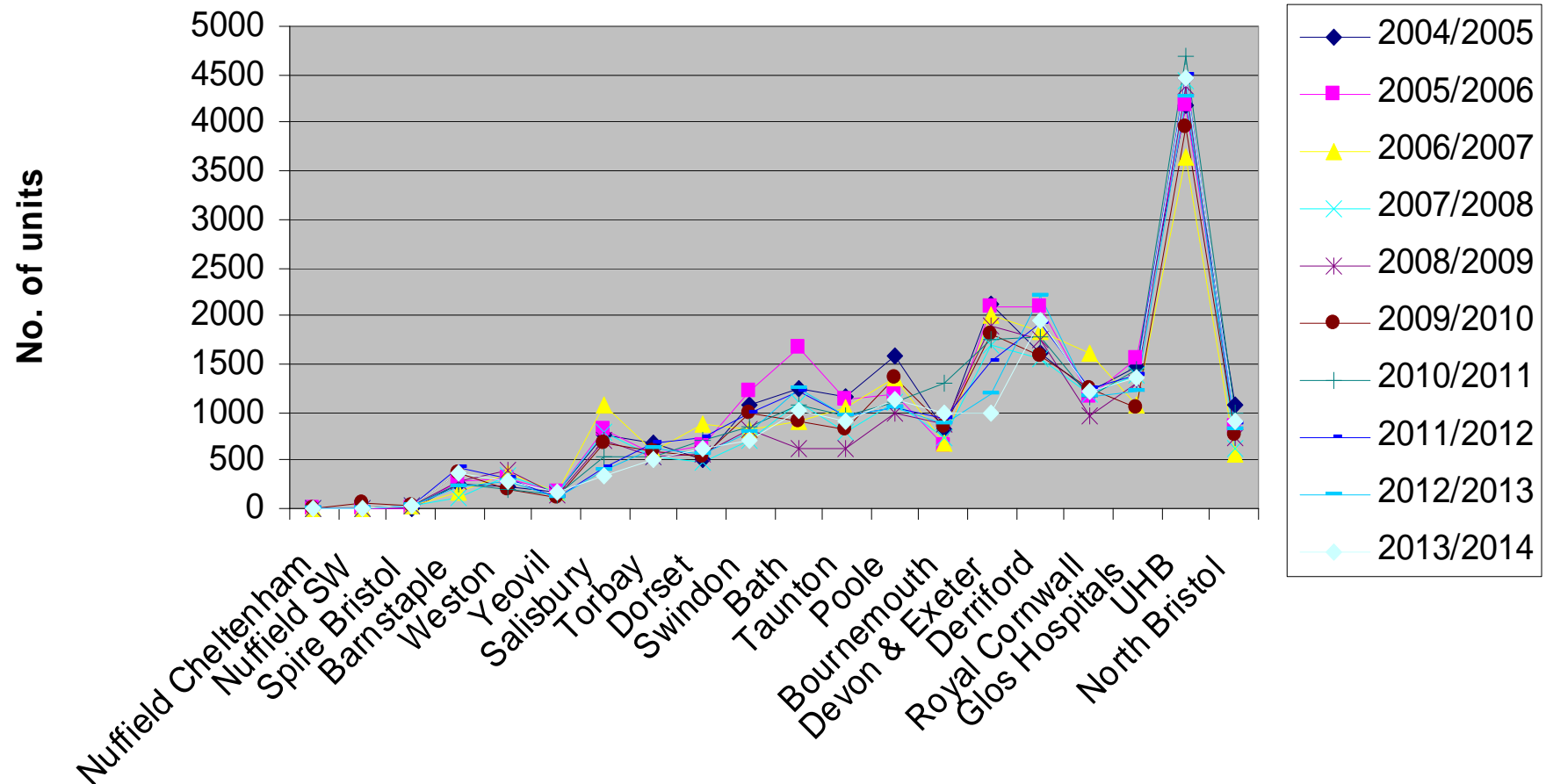
RBC Issues

RBC issues to hospitals in SW RTC region for the last ten financial years



Platelet Issues

Platelet issues to hospitals in SW RTC region in the last ten financial years



Blood Conservation

	Pre-Operative Assessment		Provide Point of Care Testing	
	Identify & Treat Anaemia	Provide Information Leaflets	Identification of Hb	Measurement of clotting parameters
Trustwide	12/19	17/19	6/19	5/19
Specific Departments	5/7	2/2	12/13	6/14

Cell Salvage

	Provide Intra Operative Cell Salvage		Provide Post Operative Cell Salvage
	During Routine working Hours	Out of Hours	
2005	90%	75%	55%
2006	83%	70%	65%
2007	71%	63%	71%
2008	80%	75%	65%
2009	68%	55%	82%
2010	79%	53%	74%
2011	71%	52%	71%
2012	79%	63%	68%
2013	68%	63%	58%
2014	74%	58%	58%

Use of rFVIIa

		2006	2007	2008	2009	2010	2011	2012	2013	2014
Hospital Stocks		12	13	14	14	14	13	13	12	13
Haemophilia	1-5	8	10	9	11	7	6	6	7	10
	6-10	0	0	1	0	0	1	1	1	1
	>10	1	2	2	1	2	3	2	1	1
Non-Haemophilia	1-5	11	12	11	11	12	12	12	10	9
	6-10	1	2	3	2	1	0	0	0	-
	>10	1	1	1	2	0	0	1	1	1

PCC - all NHS + 1 private hospital stocks and none said did not use

Obstetric Practice (NHS Hospitals Only)

All hospitals gave a Single Dose at 28-30 weeks

% Issued Traceable to Named Patient

- 11 - 100%
- 3 - > 95%
- 2 - > 90%

One hospital did not indicate percentage of traceability

15 hospitals had a Strategy/Policy to identify and treat maternal anaemia

Summary

- Participation from all NHS hospitals
- Structure –
 - All hospitals have HTT
 - In 4 NHS hospitals CH has no dedicated sessions
 - No HTC attendance - medicine, surgery, orthopaedics, ED, CG and Obs & Gynae
- Induction > regular training
- Electronic issue in 84%, full blood tracking 37%
- RBC annual issues ↓ 8.2%
- Platelet issues within the region in 2013/14 ↓ 0.5% in contrast to ↑ 1.4% nationally
- IOCS - little change since 2005
- Off label rFVIIa – only 1 hospital >10 issues
- All hospitals single dose RAAD prophylaxis