



South West Regional Transfusion Committee

RTC DATABASE

April 2011 – March 2012

Dedicated Tx Sessions

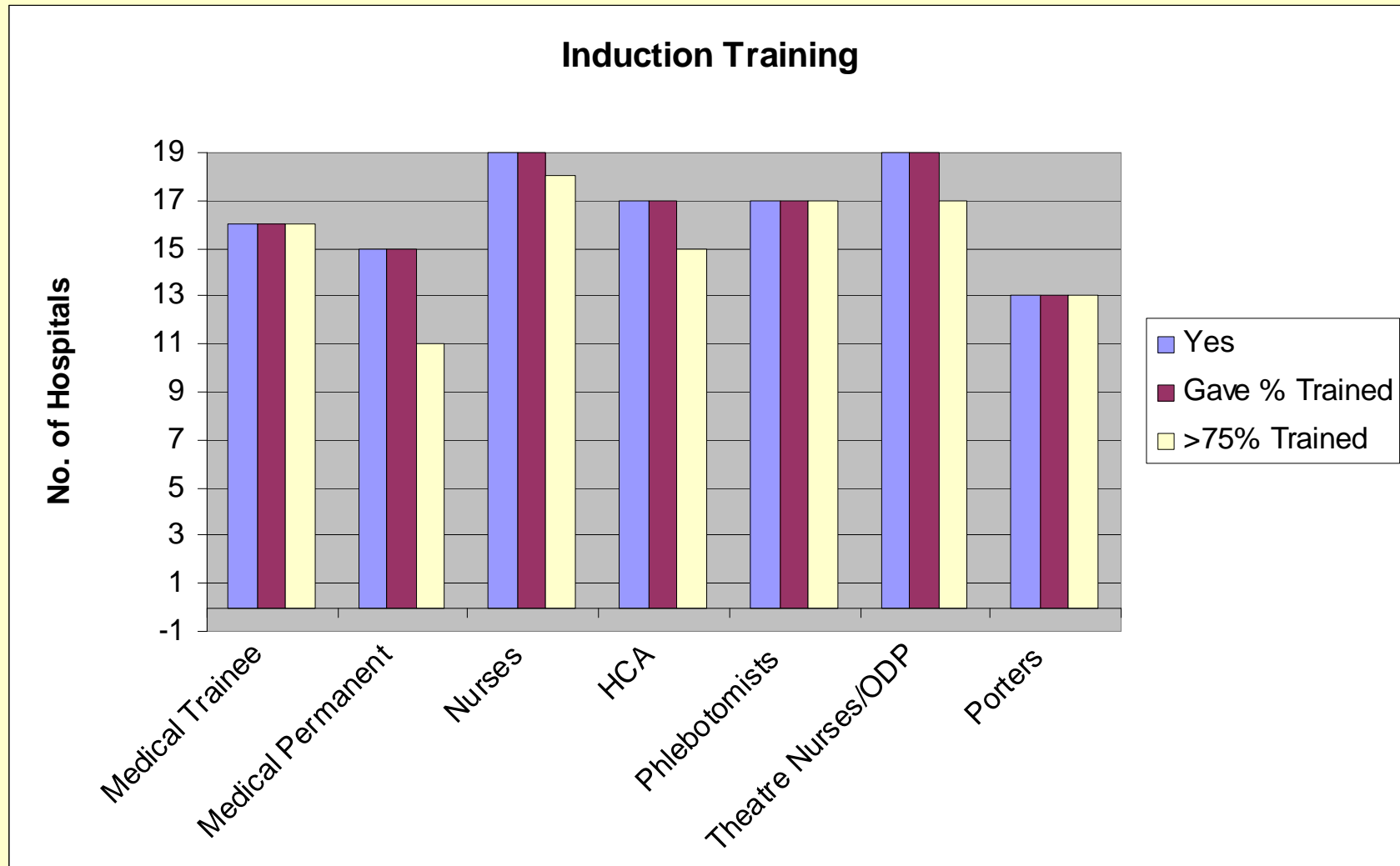
- HTC Chair – none indicated separate sessions but 7 shared sessions with the role of CH responsible for Tx
- TLM – range between 2-10, with 14/19 stating 10
- TP – range between 5-25
- CH for Tx – 3 with no sessions, 1 <1 session

HTC Attendance By Specialty

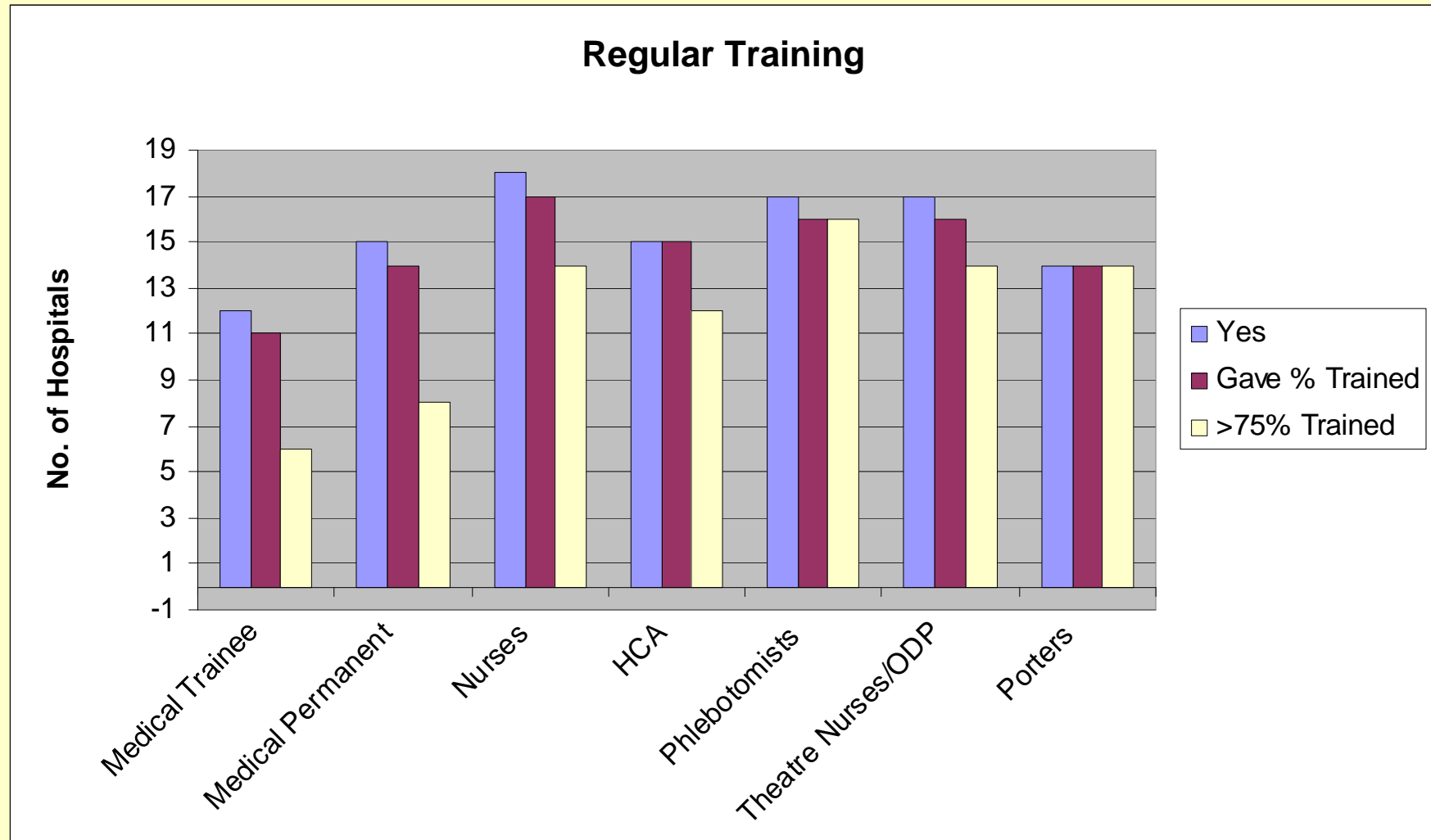
	Always	Frequently	Sometimes	Never	NA or NG
Medicine (excl. Haematology)	1	5	6	6	1
Haematology	14	5	0	0	0
Anaesthetics	14	4	1	0	0
Obs & Gynae	4	9	3	2	1
Surgery	2	3	12	2	0
Orthopaedics	1	2	9	6	1
Emergency Department	1	7	4	5	2
Clinical Governance	3	7	5	4	0

Make Transfusion Safer

Induction Training (19 hospitals provided data)



Regular Training (19 hospitals provided data)



Electronic / Radiofrequency technology throughout tx process

	<300	300-800	>800
Yes	1	4	3
No	2	5	3

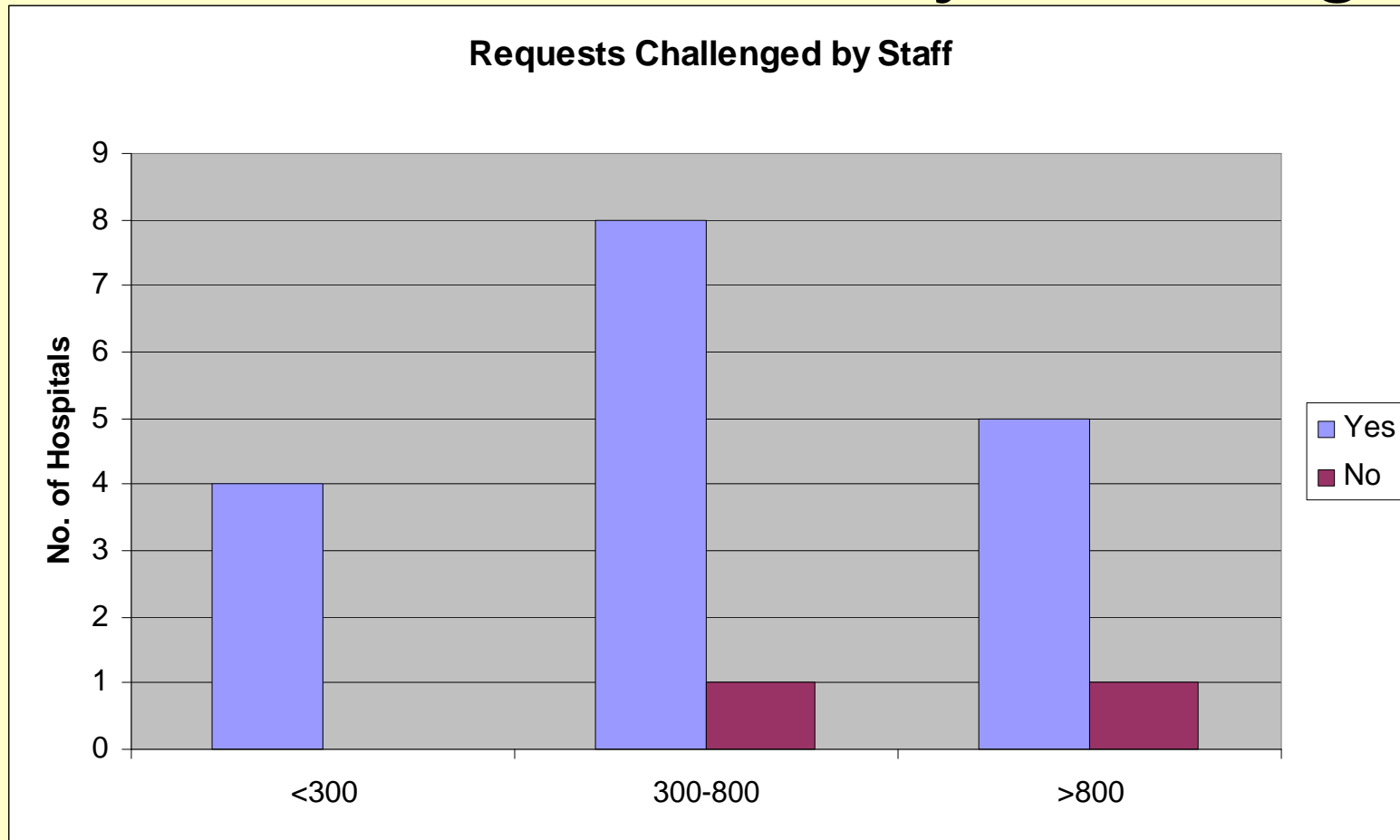
Laboratory Information

All CPA and NEQAS compliant

Electronic Issue

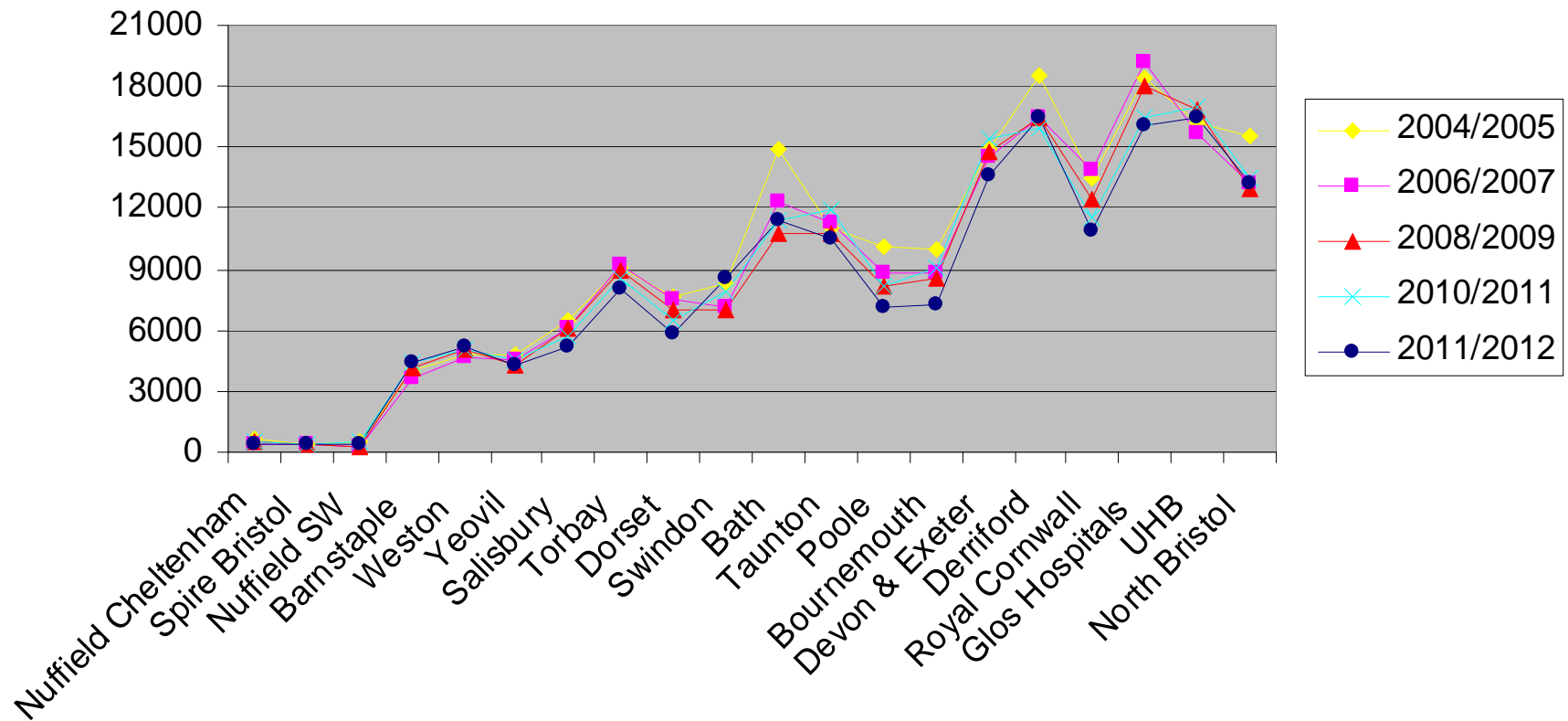
2005	45% (9 out of 20)
2006	49% (11 out of 23)
2007	46% (11 out of 24)
2008	65% (13 out of 20)
2009	68% (15 out of 22)
2010	74% (14 out of 19)
2011	81% (17 out of 21)
2012	79% (15 out of 19)

Request for Transfusion where indication unclear usually challenged



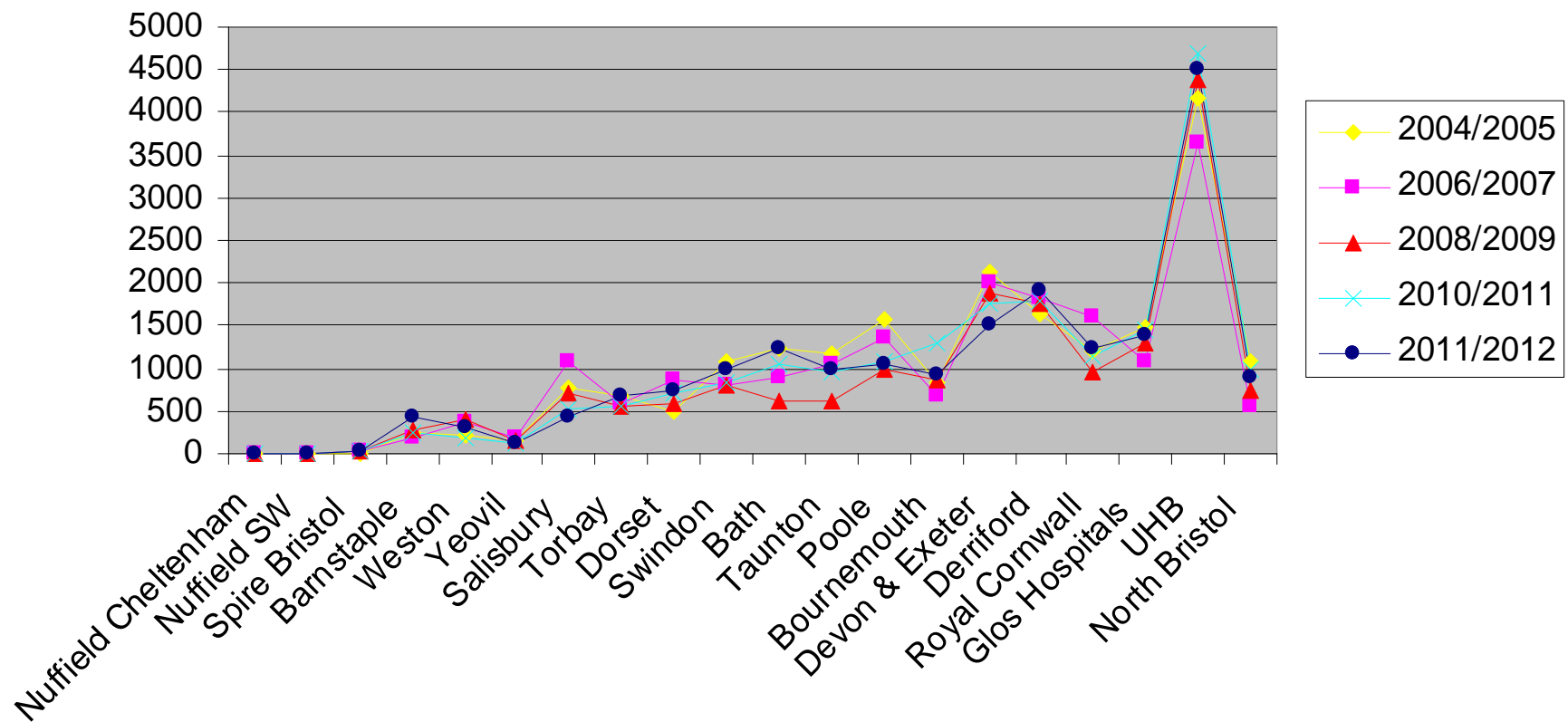
RBC Issues

RBC Issues to Hospitals in SW RTC Region for the last eight Financial Years



Platelet Issues

Platelet Issues to Hospitals in SW RTC Region in the last eight Financial Years



Blood Conservation

	Pre-Operative Assessment		Provide Point of Care Testing	
	Identify & Treat Anaemia	Provide Information Leaflets	Identification of Hb	Measurement of clotting parameters
Trustwide	14/19	17/19	6/19	4/19
Specific Departments	5/5	1/2	13/13	4/15

Cell Salvage

	Provide Intra Operative Cell Salvage		Provide Post Operative Cell Salvage
	During Routine working Hours	Out of Hours	
2005	90%	75%	55%
2006	83%	70%	65%
2007	71%	63%	71%
2008	80%	75%	65%
2009	68%	55%	82%
2010	79%	53%	74%
2011	71%	52%	71%
2012	79%	63%	68%

Use of rFVIIa

		2006	2007	2008	2009	2010	2011	2012
Hospital Stocks		12	13	14	14	14	13	13
Haemophilia	1-5	8	10	9	11	7	6	6
	6-10	0	0	1	0	0	1	1
	>10	1	2	2	1	2	3	2
Non-Haemophilia	1-5	11	12	11	11	12	12	12
	6-10	1	2	3	2	1	0	0
	>10	1	1	1	2	0	0	1

PCC - all NHS + 1 private hospital stocks and none said did not use

Obstetric Practice (NHS Hospitals Only)

16 hospitals gave a Single Dose at 28-30 weeks

1 hospital gave Two Doses - 28 & 34 weeks

% Issued Traceable to Named Patient

- 8 - 100%
- 5 - > 95%
- 4 - 75-90%

14 hospitals had a Strategy/Policy to identify and treat maternal anaemia

Summary

- Participation from all NHS hospitals
- Structure –
 - All hospitals have HTT
 - In 3 NHS hospitals CH has no dedicated sessions
 - No HTC attendance - medicine, surgery, orthopaedics, ED, CG and Obs & Gynae
- Induction > regular training
- Electronic issue in 80%, full blood tracking 44%
- RBC annual issues ↓ 5%
- No change in platelet issues within the region in 2011/12 in contrast to an 8% rise nationally
- IOCS - little change since 2005
- Off label rFVIIa – only 1 hospital >10 issues
- Most hospitals single dose RAAD prophylaxis