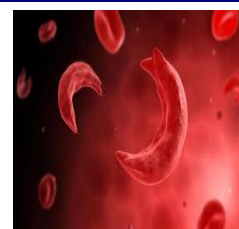




Sickle Cell Disease...

What would you do if?



Friday 4th May 2018, 10:00am - 4:00pm

Haydock Park Racecourse,
Premier Suite, 2nd Floor
Newton-le-Willows, Merseyside WA12 0HQ

Programme

9:30 ~ 10:00	Registration, Coffee and Exhibitions	
10:00 ~ 10:05	Welcome	Dr Craig Carroll NW RTC Chair
Session 1 Chair: Craig Carroll NW RTC Chair / Consultant Anaesthetist, Salford Royal Foundation Trust		
10:05 ~ 10:35	Sickle Cell Disease – An Overview	Joe Sharif Manchester University NHS Foundation Trust
10:35 ~ 11:05	Highlights from the NCA of Transfusion Management in Sickle Cell Disease	Kate Pendry Manchester University NHS Foundation Trust
11:05 ~ 11:35	Management of Complications of Sickle Cell Disease	Bushra Ahsan Manchester University NHS Foundation Trust
11:35 ~ 12:05	Tea, Coffee and Exhibitions	
12:05 ~ 12:35	NHSBT Challenges in the Supply of Blood for Sickle Cell Patients	Richard Whitmore NHS Blood and Transplant
12:35 ~ 13:05	Sickle Cell Patients in RCI	Dan Palmer NHS Blood and Transplant
13:05 ~ 14:15	Lunch and Exhibitions	
Session 2 Chair: Bushra Ahsan Consultant Haematologist, Manchester University NHS Foundation Trust		
14:15 ~ 14:45	Management of Sickle Cell Patients Undergoing Elective Surgery	Dave Simcox Royal Liverpool & Broadgreen University Hospitals NHS Trust
14:45 ~ 15:00	Patient Experience	Anne Olaleye
15:00 ~ 15:30	Sickle Therapeutic Apheresis Service: Sickle Cell Disease and Automated Red Cell Exchange in Adults & Paediatrics	Laura Hatton / Rebekah Burnham Therapeutic Service, St James's University Hospital
15:30 ~ 16:00	Manual Red Cell Exchange	Rachel Brown Manchester University NHS Foundation Trust
16:00	Concluding remarks, evaluations and close	



Follow us on twitter @PBM_NHS #NWBled