

## *Patient Blood Management*

What Next?

Dr Gavin Cho

---

---

## *What does PBM mean to me?*

- A framework for coordinating activities that “promote good transfusion practice”
  - We are already doing Audits, Training, Traceability, Wastage
  - Three pillars:
    - Optimise blood volume and red cell mass
    - Minimise blood loss
    - Optimisation of the patient's tolerance to anaemia
- 
-

## *What would I put in “Metro”?*



- Patient-centred
- Evidence-based
- Multi-disciplinary
- Pre-emptive
- Care optimisation
- NBTC and DH support

*Rebranding ...*

*... or evolution?*



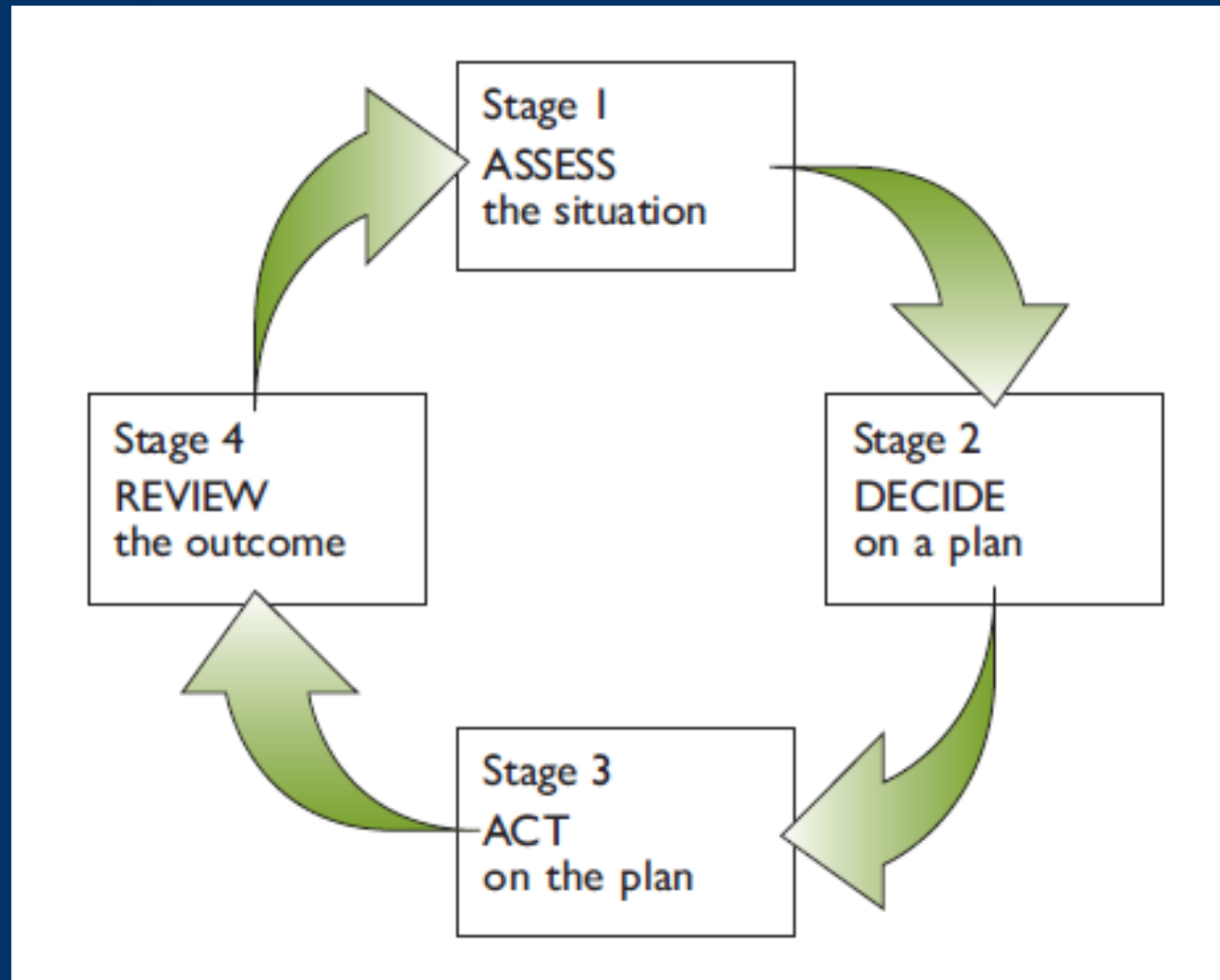
## *What can I do locally?*



↑ Main Entrance ↑  
↑ ACAD Centre ↑  
↑ Birth Centre ↑  
↖ 🚲 Cycle Parking ↖  
↑ **Emergencies** ↑  
Car Parks 1&2 P

## How would I start?

(modified from Brown and Shipman, 2012)



# *What is the first barrier?*

*(<http://www.aviationchatter.com/2011/05/inertias-surprising-effect-on-wind-shear/>)*



*The place that sends you mad...*





## *Instructions for getting approvals*



*Bureaucracy can be disheartening...*



*Persistence will pay off*



## *What can I do at the National level?*

- National Comparative Audits
  - Join guideline writing groups
  - Participate in research
  - Respond to surveys
  - Volunteer as a pilot site for new projects
- 
-

## *What can the RTC do?*

### *London examples*

- Training
  - Transfusion in sickle cell disease, Transfusion and Transplantation, BMS empowerment, Haemostasis and Surgery
- Working groups:
  - London Haematology & Trauma Network, Education group, RTC communication and website, London Platelet Action Group

## *Examples (continued)*

- Other groups: TAG, TP
  - Shared care document
  - Clinical pathway for patients refusing blood
  - Audits
- 
-

## *What else could the RTC do?*

- Publicise new guidelines and standards
  - Raise interest in transfusion
  - Engage clinical staff and senior management
  - More education and training
  - Encourage data collection, audit
  - Contribute to performance measures
  - Patient participation
- 
-

## *What else could the RTC do?* (continued)

- Share with other RTCs so we benefit from their work and they benefit from ours



>>>



- Look at tools that might help:
  - Google Course Builder, QuickAudit
  - AIM-II, Apps



## *Your RTC needs you*

- Develop innovative projects
- Collect data on the difference it has made
- Come speak at the next RTC Education day!

