

Oxford Vascular Network

What is it?

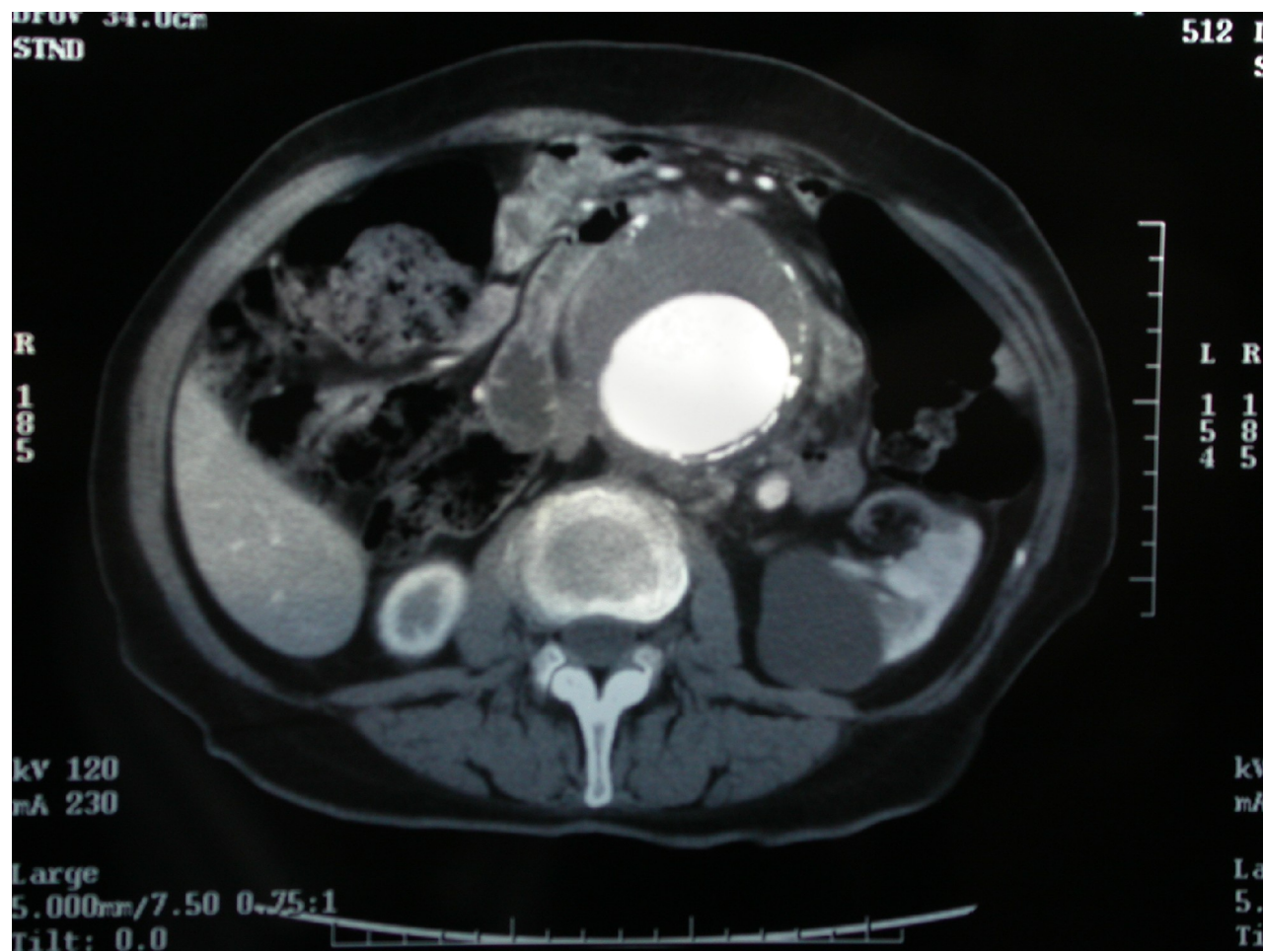
Formal arrangement between hospitals in the Oxford Deanery to enable patients with acute life or limb threatening vascular problems to be dealt with by specialist vascular surgeons and radiologists.

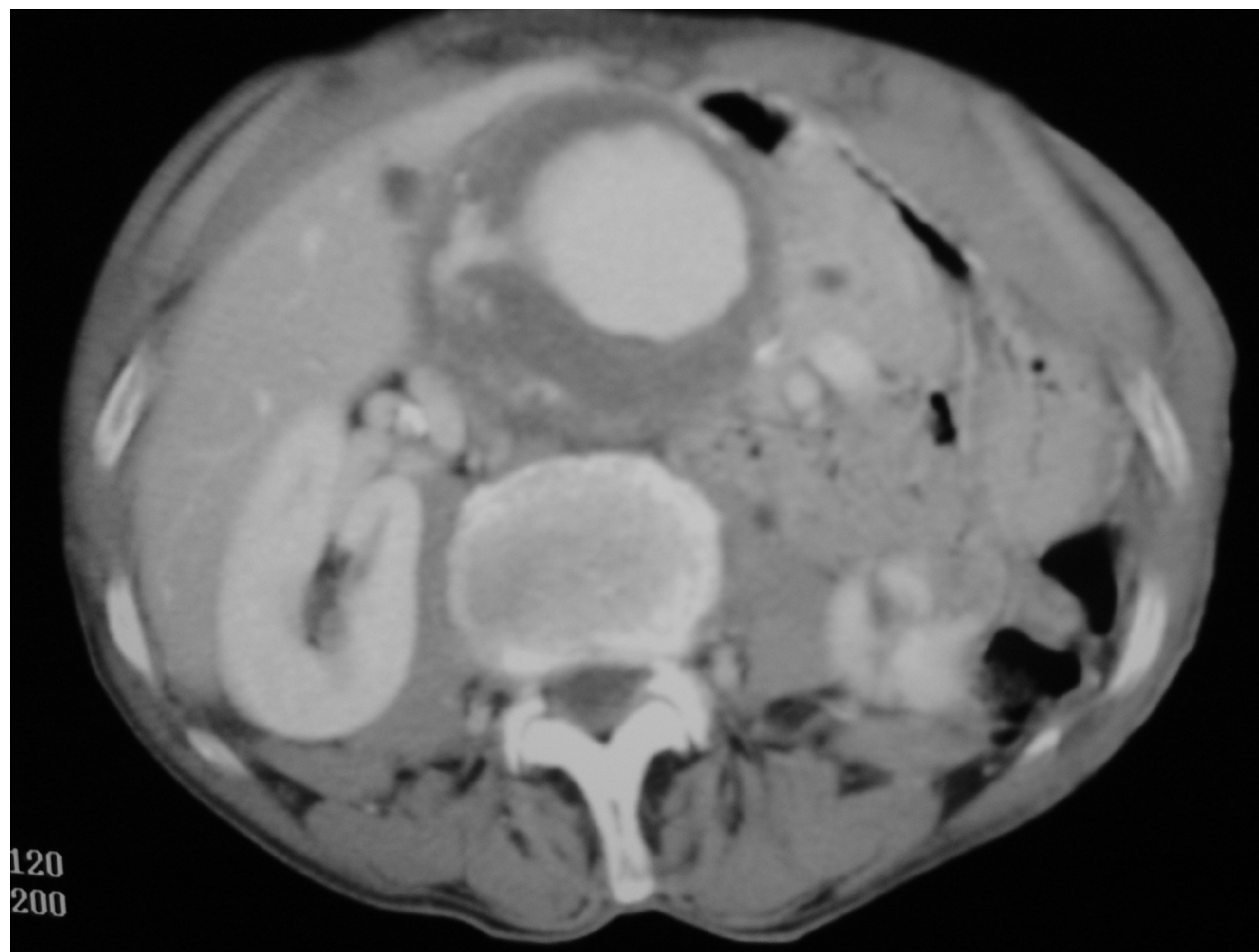
Rota from Summer 2009

Monday	Oxford
Tuesday	Wexham
Wednesday	South Bucks (night)
Thursday	Reading
F/S/S	Rolling

What does it deal with?

- All emergency arterial problems
- Ruptured AAA
- Acutely ischaemic legs
- Vascular injuries – trauma or iatrogenic
- All accepted as “district” patients





120
200



What does it not deal with?

- Thoracic aortic aneurysm rupture/dissection
- DVT
- Cardiac trauma
- Chronic ischaemia

Scientific basis for the Network

Lothian Vascular Audit

1 hour of transfer time for ruptured AAA
does not reduce the overall 30 day
mortality

British Journal of Surgery. 73(5):395-8, 1986

Who is in the Network?

- OUH
- Wexham Park
- Royal Berks
- South Bucks
- (Milton Keynes)

Surgical Personnel

- Oxford - 3 wte
- Wexham - 1 wte
- Reading - 0.5 wte
- S Bucks - 1.5 wte

What's good and bad?

- Patients receive specialist assessment and treatment
- Emergency help for other specialties
- Travel
- Long term sustainability
- Screening requirements
- Anaesthetic and Radiology cover

What is provided?

- Full time consultant and registrar cover
- Full time radiology (almost)
- Availability to travel to DGH for on-table emergencies

Why change the Network?

- AAA screening requirements
- EVAR for ruptured AAA (kit and radiology)
- Continuing care for vascular emergencies
- Comprehensive post-operative care for elective vascular operations

Development of the Network

- Up to Feb 2012
 - M Oxford
 - T Wexham
 - W South Bucks (night)
 - Th Reading
 - F/S/S Rolling
- From Feb 2012
 - M Oxford
 - T Oxford
 - W South Bucks (night)
 - Th Reading/Oxford
 - F/S/S Rolling

Blood

- Sample taken by referring hospital
- Sample only or blood sent with the patient

Problems with blood

- Lack of hospital number in receiving hospital
- Blood packs separated from patient during transfer
- Blood packs not certifiably refrigerated