

Case 2

Pedestrian vs Car

- ISS: 34
- Age: 42
- Occupation: Factory worker
- MOI: Pedestrian vs car
- BIB: Transfer from trauma unit

Admission:

A – self maintained
B – RR 24 sats 100%
C – HR 90 bp 91/55
D – GCS 15/15

TEAMS:

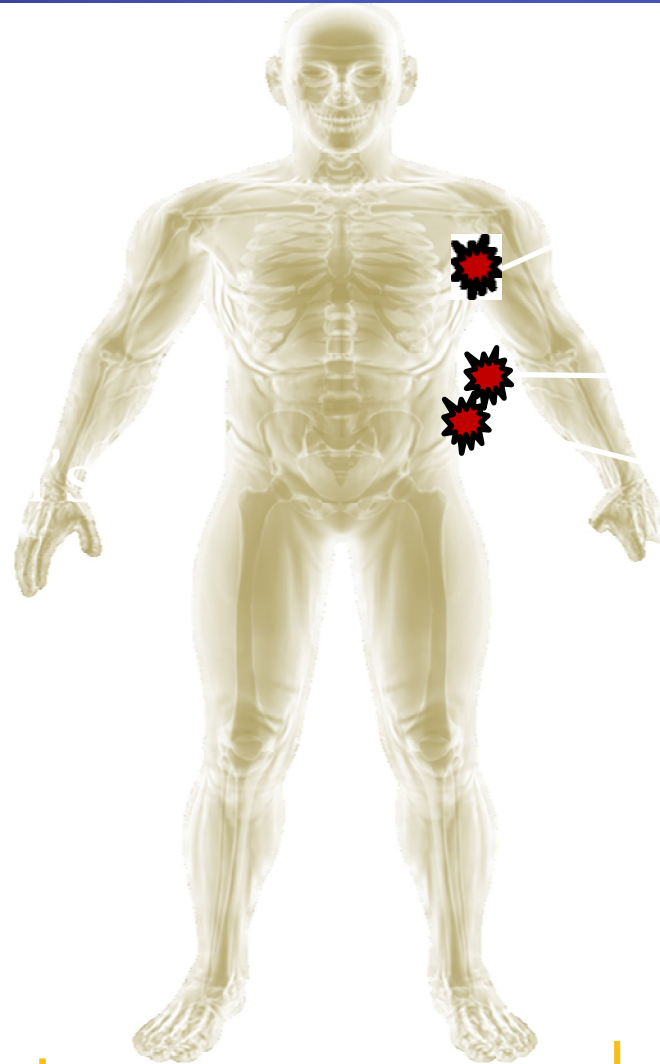
General surgery

Cardiothoracics

Urology

Interventional radiology

Injuries



L Pneumothorax
L Rib 9-11 #s

Renal laceration

Splenic laceration

14.2

23:15

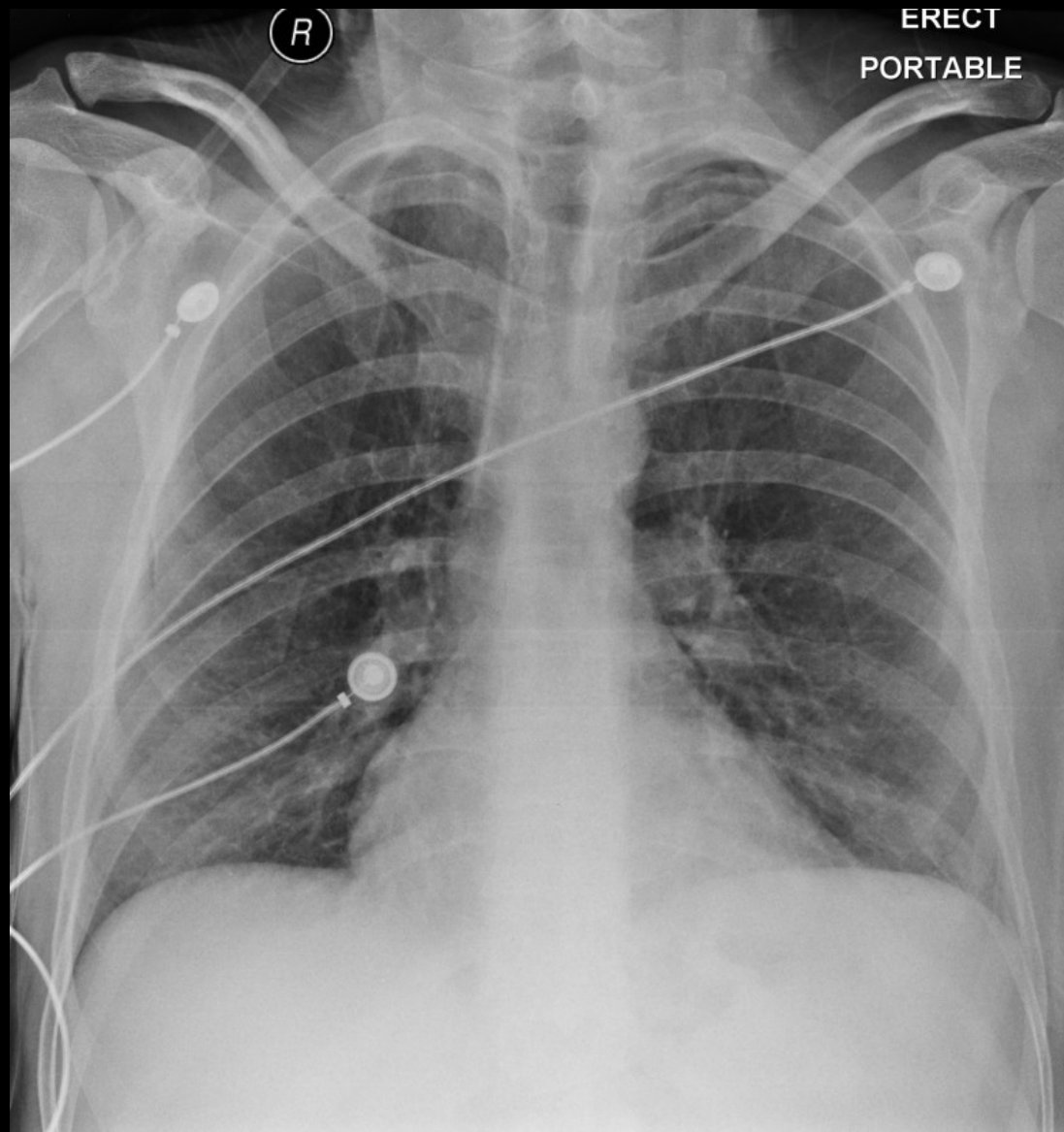
Call

Left Hereford

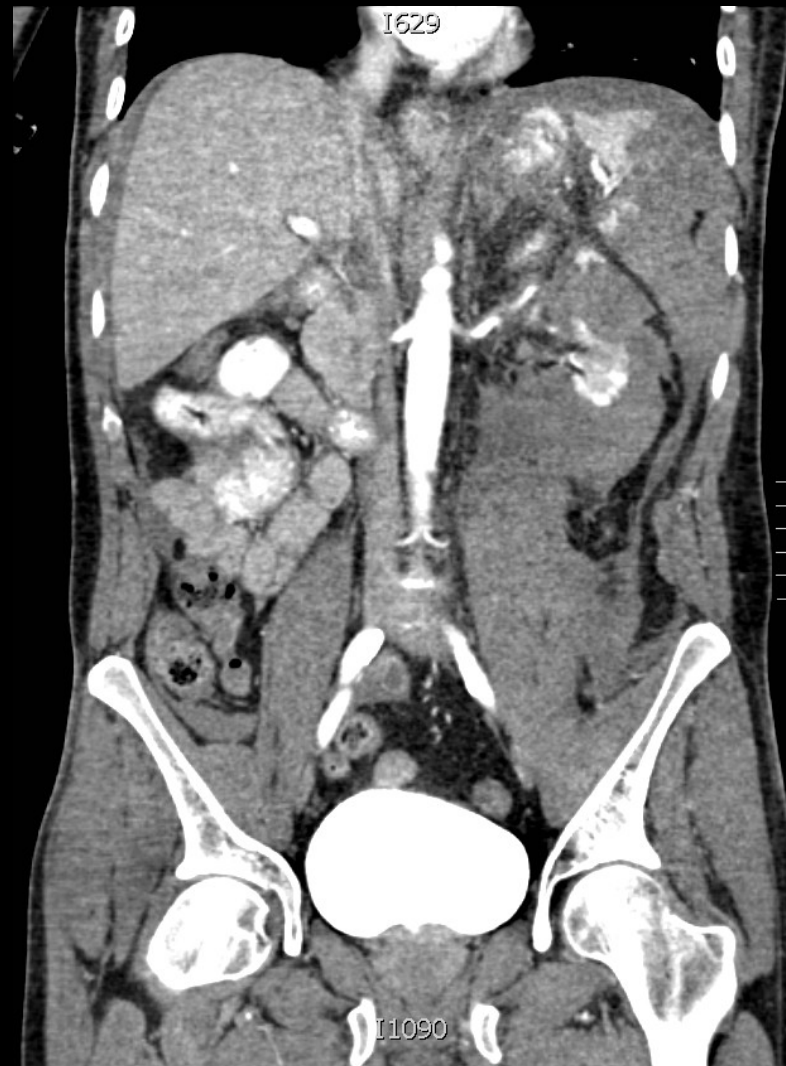
Arrived QE

ITU

Left Pneumothorax



Splenic Injury



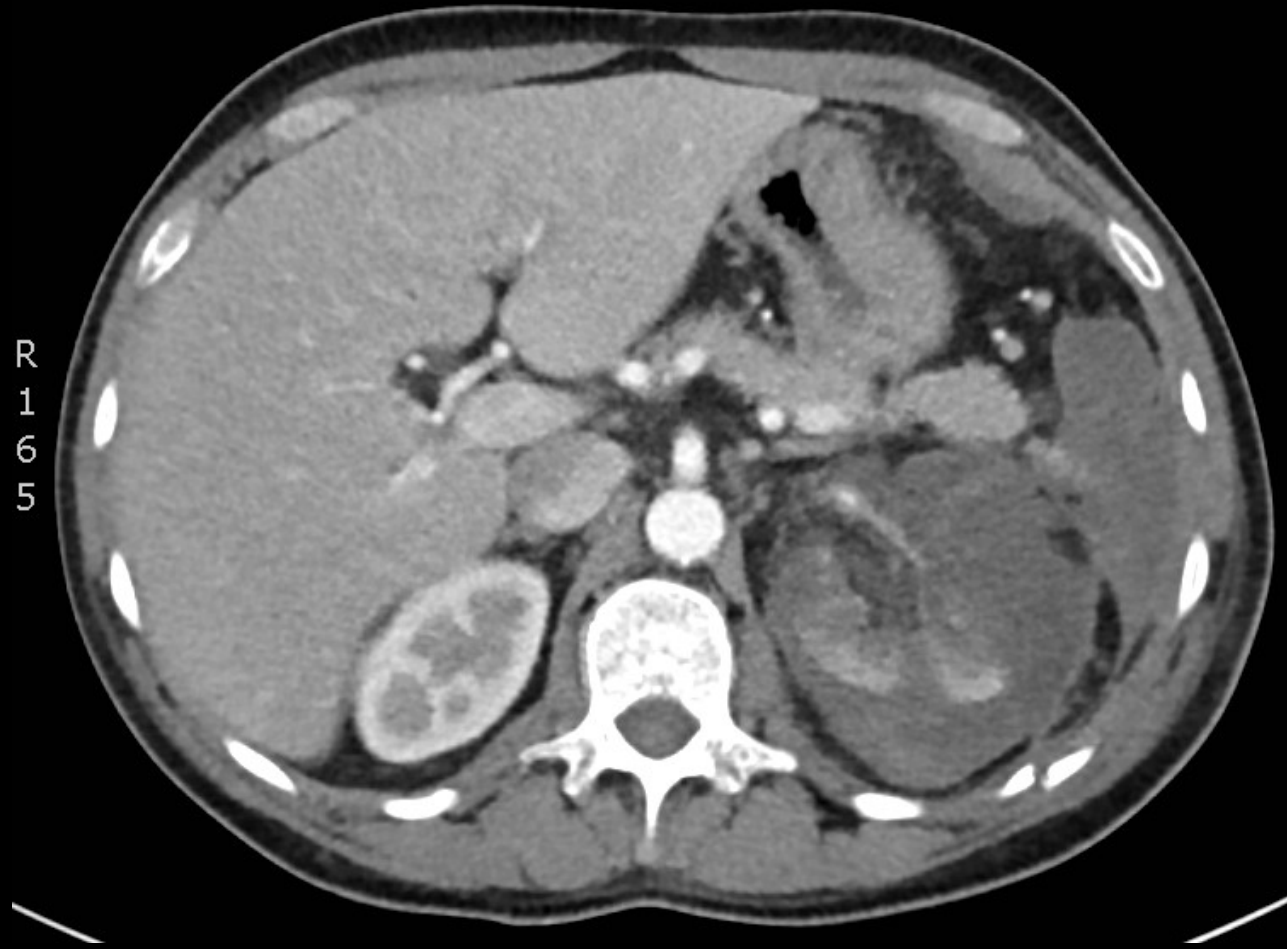
Left Kidney Injury



After 3 days

- Deterioration
- Pain hadn't settled
- Hb dropping

Evolving Kidney and splenic injury



At day 8

- Deteriorated again
- SOB
- Chest pain

Pulmonary Embolus

