



**Blood and Transplant**

# **South West Transfusion Laboratory Survey**

Feb 2017 – present

Inga Willett/Janet Birchall- NHSBT

**Caring Expert Quality**

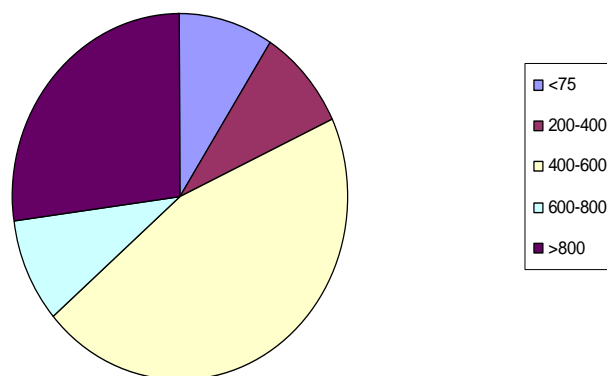
## Background

- 21 eligible Trusts/hospitals (18 NHS, 3 private)
- 52% (11/21) responded (10 NHS, 1 private)
- 33% (7/21) fully completed

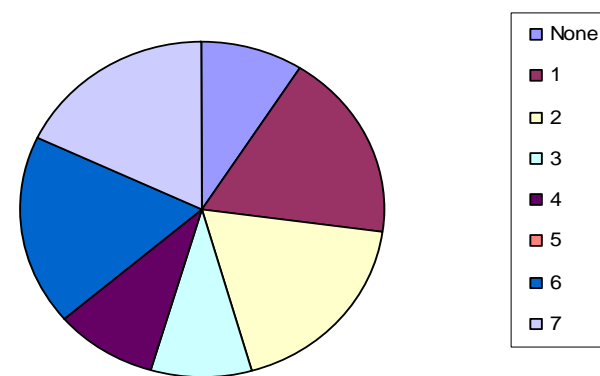


# Results – General Information

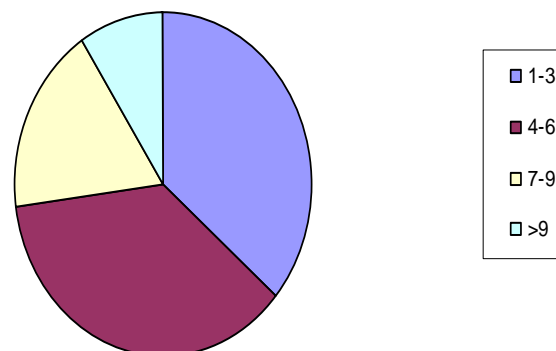
Number of beds in hospital



Number of satellite blood fridges within hospital

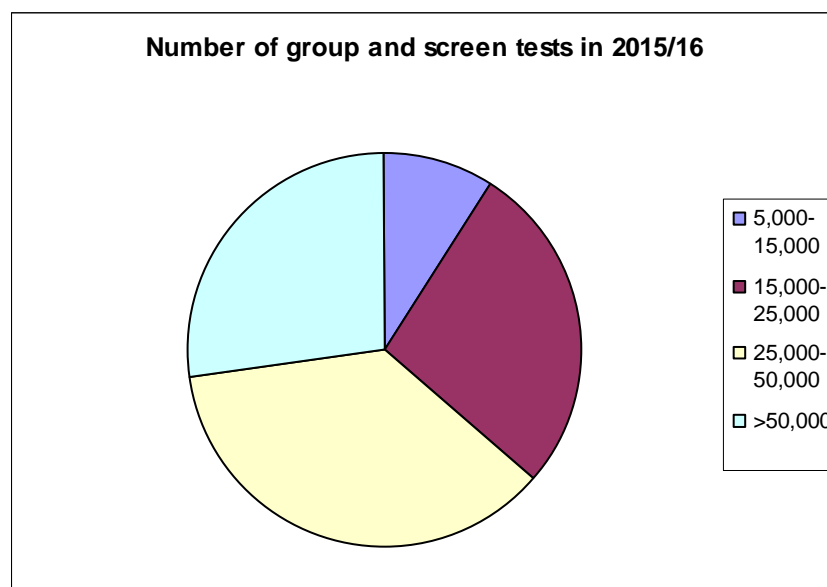


Number of external locations blood provided to



- 36% bone marrow transplant unit (4)
- 36% are major trauma centre (4)
- 91% obstetrics unit (10)
- 64% do not provide IVIG issue/documentation via tx lab (7) (1 N/A)

# Results – Measure of Activity



73% use 2-3 serological ab ID panels (8), 27% use  $\geq 3$  (3)

73% receive  $\leq 7,000$  RBCs from NHSBT/yr (8), 27% receive  $\geq 10,000$  (3)

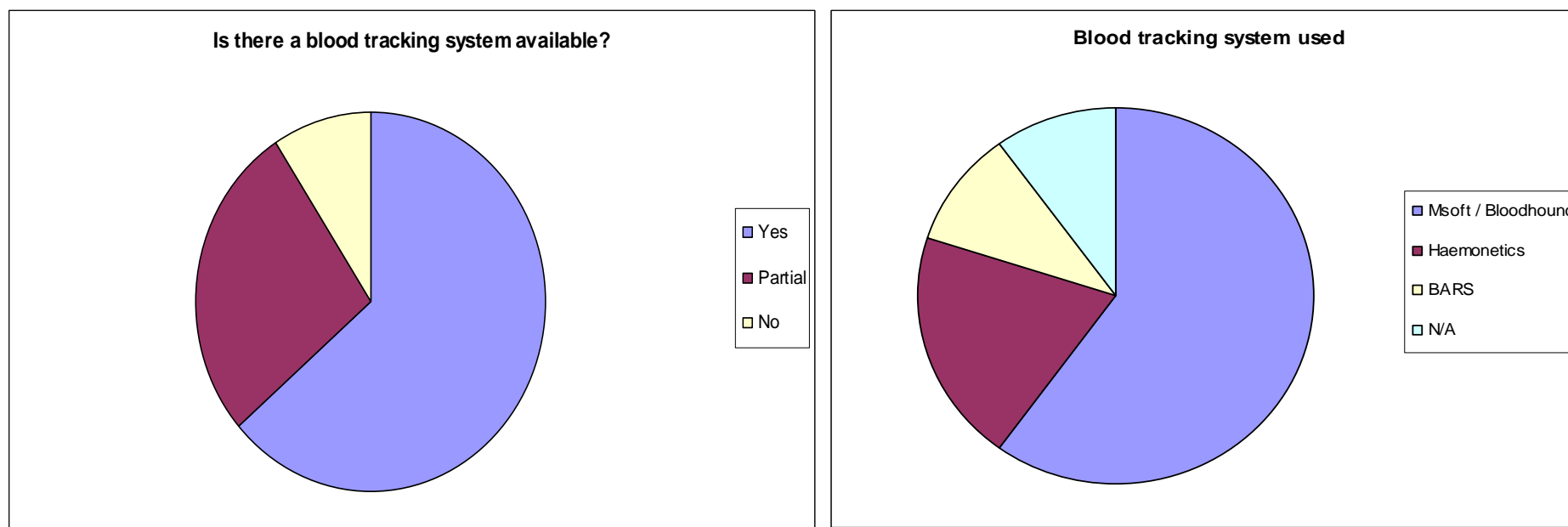
82% receive  $< 50$  RBCs/ys from private hospitals (9) (1 N/A)

46% O- 10-13% total stock (5) (3 N/A)

73% 25-100 major haemorrhage calls/ys (8)

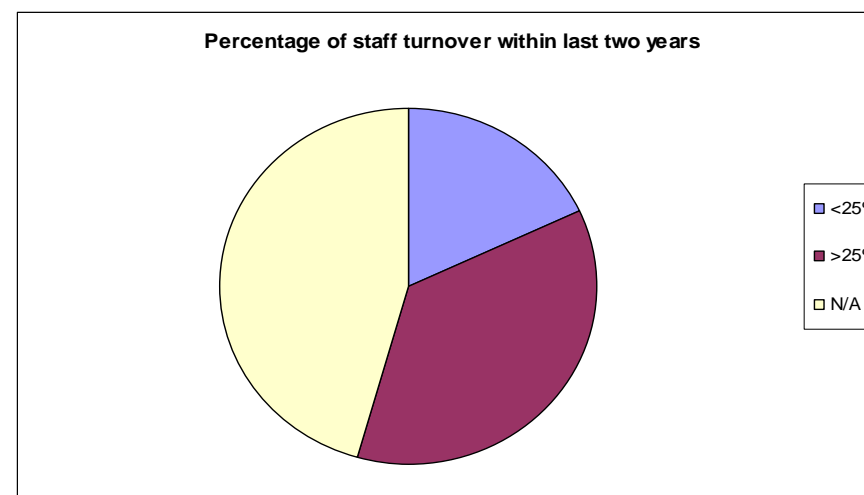
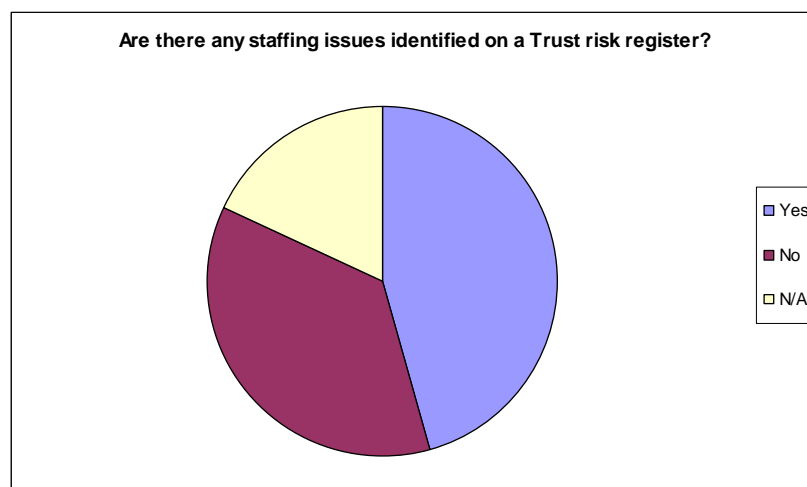
## Results – IT Resource

- Electronic Issue was available and in use in 100% of laboratories (11)
- 91% (10/11) blood tracking available. Remote issue only one hospital



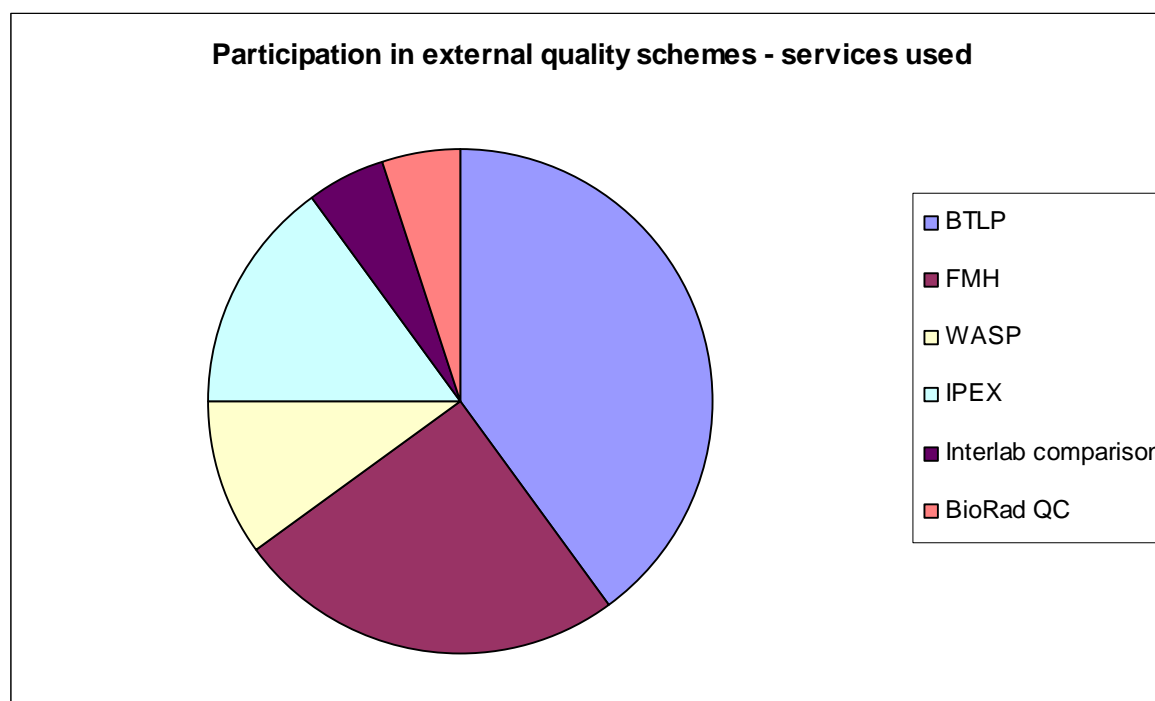
# Results – Laboratory Staffing

- 55% (6/11) reviewed annually through local governance (3 N/A)
- 45% (5/11) compliant with UK transfusion collaborative minimum standards (3 N/A)



## Results – Incidents

- 55 % (6/11) not contacted last 2 years by external quality scheme because of poor performance (3 N/A)



•Note – 3 labs did not answer which external schemes (if any) they participate in

## Results – Discussion

- Results suggest high activity but insufficient staff resource
- More meaningful if better participation.
- Inga still gathering results from laboratories who have not taken part – please contact her if you know you did not participate, or if you partially completed sections.







Blood and Transplant

**Thank you!**  
Any questions?

