

South Central RTC February audit results

Tanya Hawkins

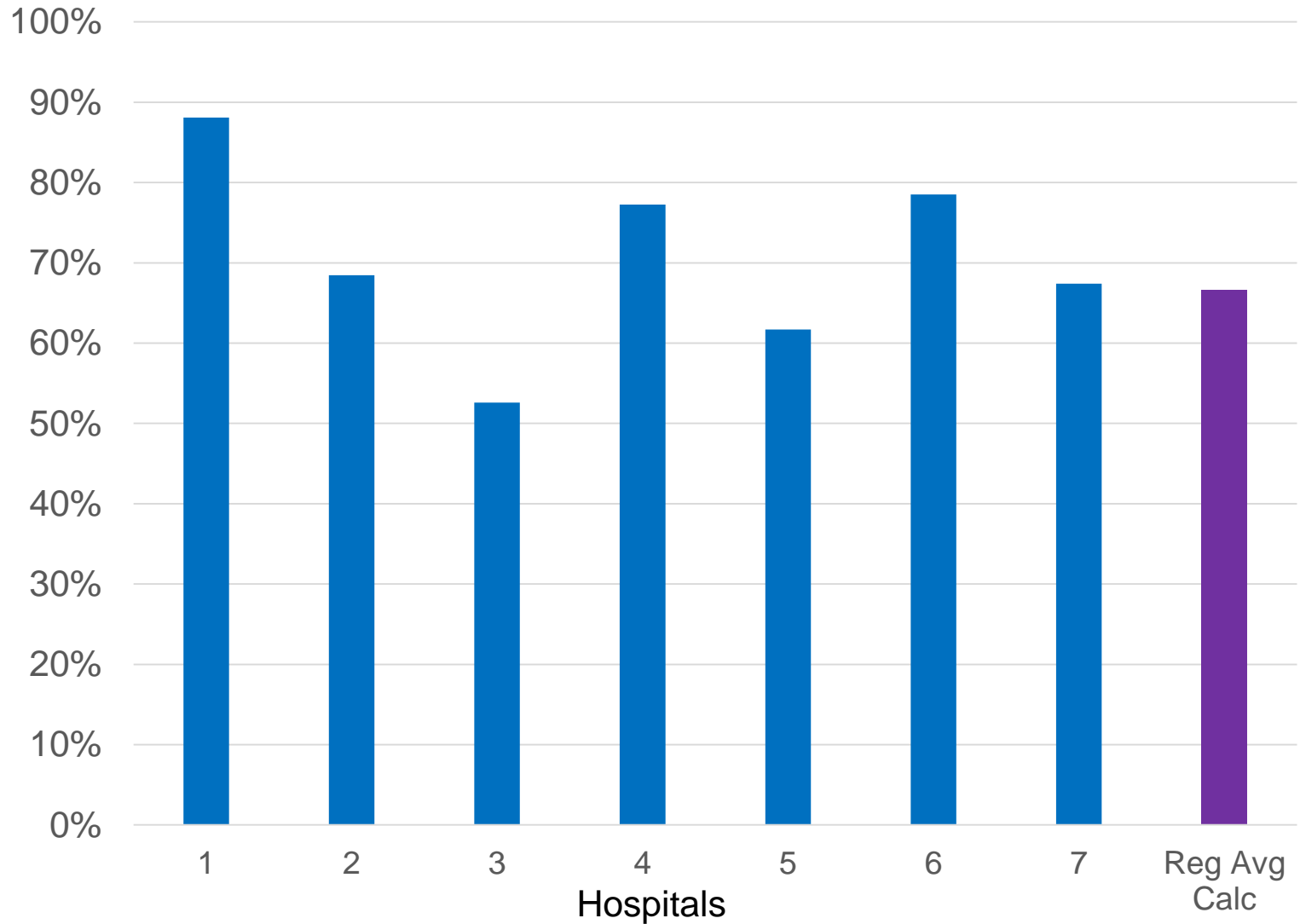
Transfusion Practitioner, Royal Berkshire Hospital



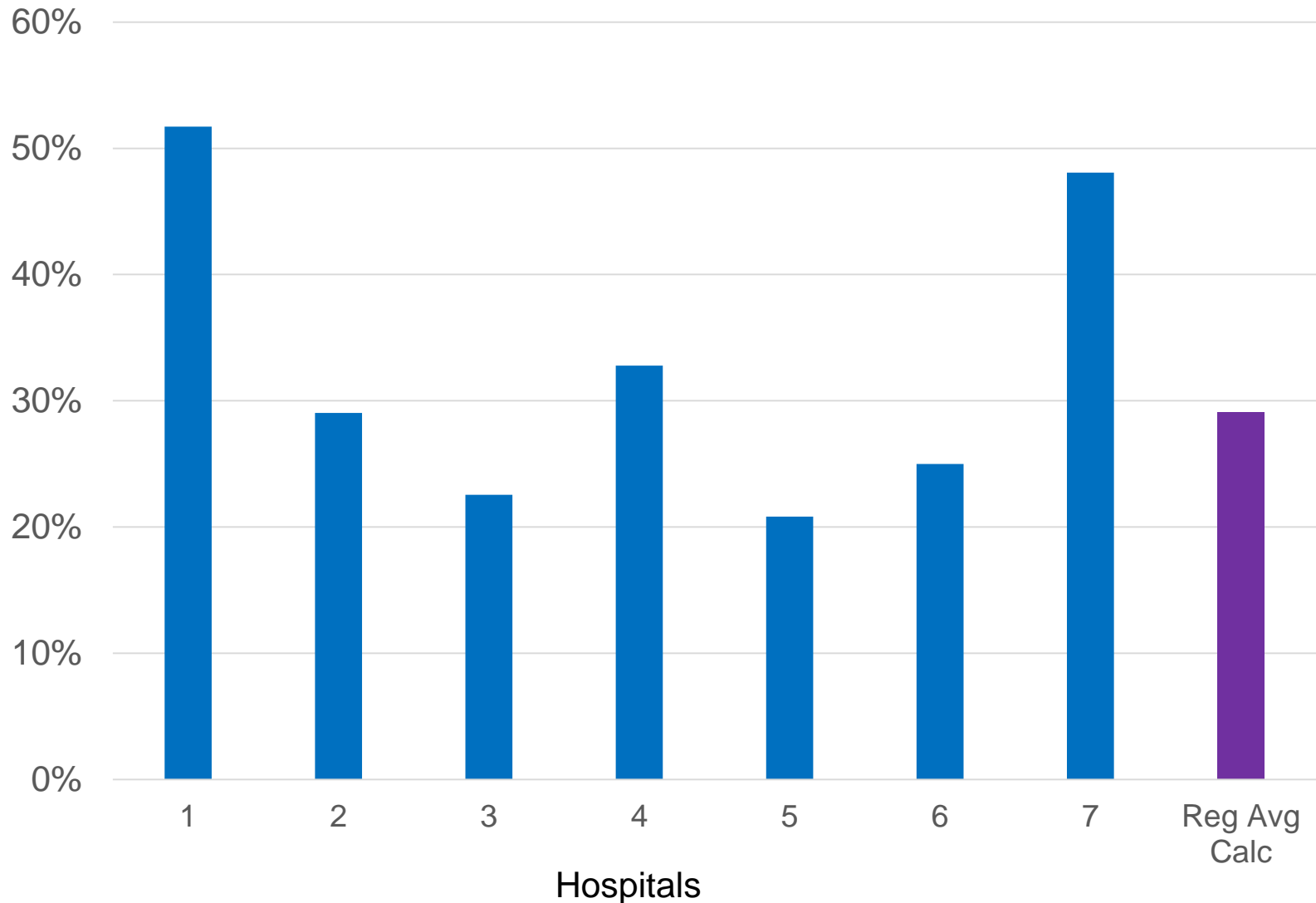
What is Crossmatch:Transfusion Ratio

- CT Ratio is percentage of red cell units issued that are transfused
- E.g. 100 issued : 50 transfused = C:T 50%
- Why does it matter?
 - Unnecessary work for lab staff
 - Increase risk of collecting wrong unit
 - Increase RBC in stock fridge

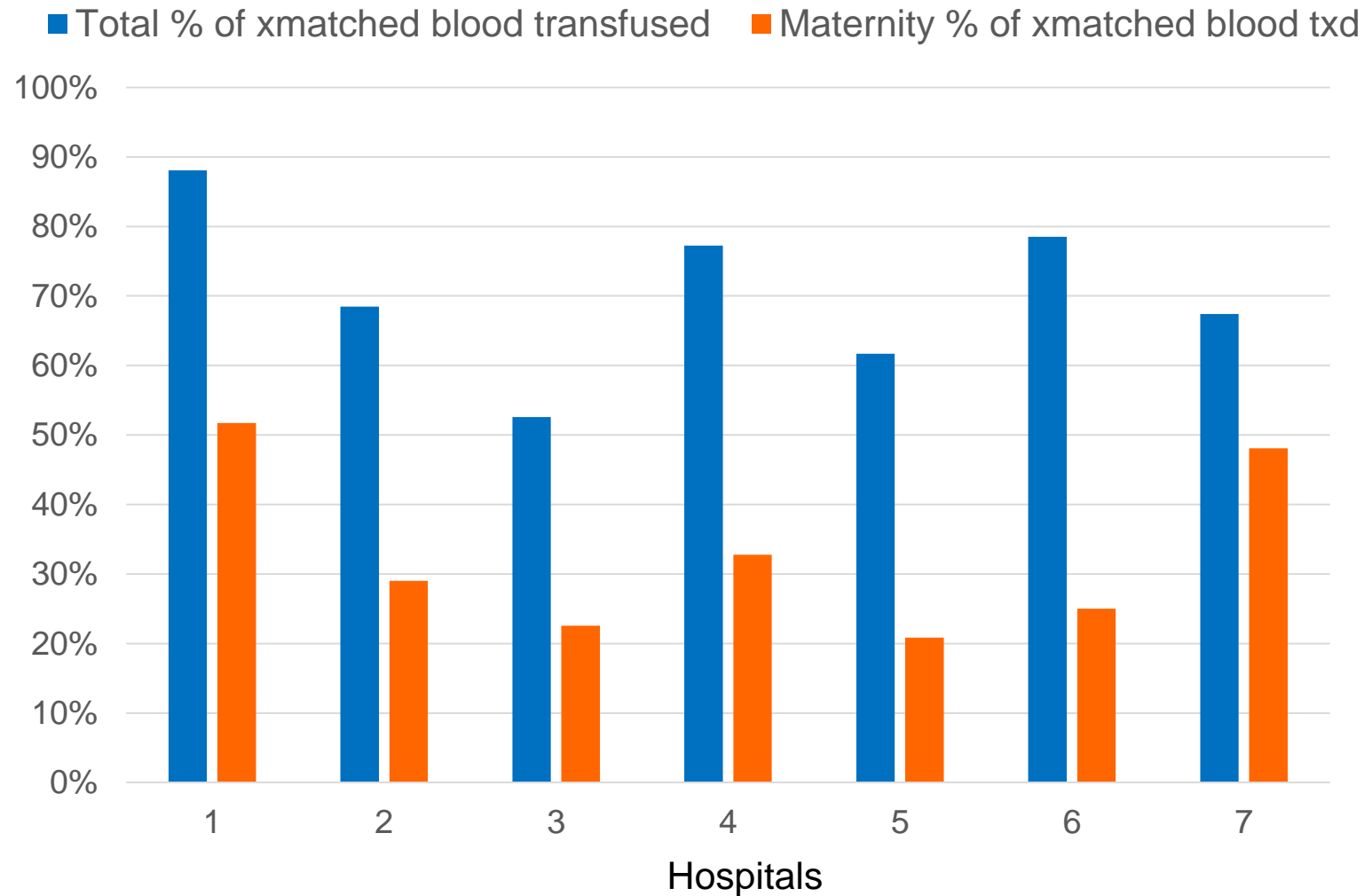
South Central C:T ratio for Trust



South Central C:T ratio Maternity

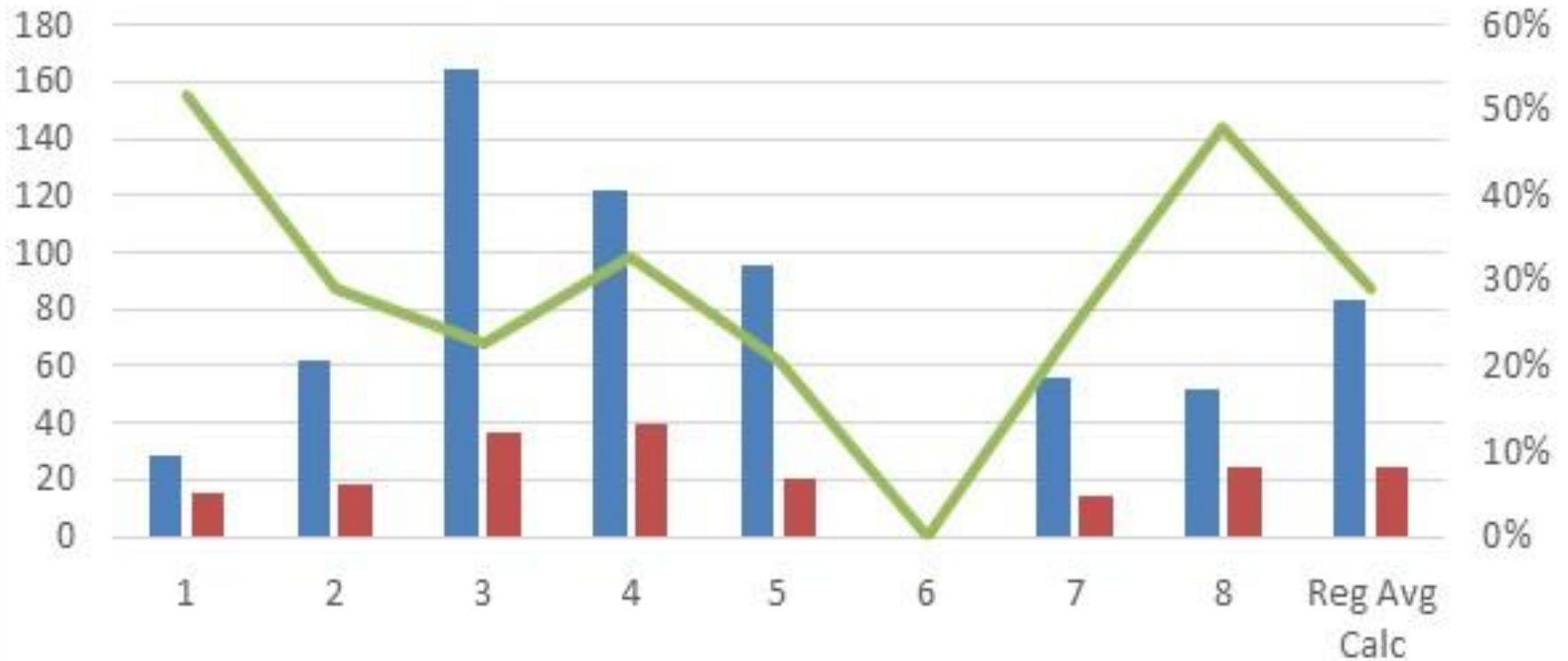


South Central C:T ratio Trust vs Maternity



Number of Units

Maternity crossmatched units



Maternity - xmatched units

Maternity - xmatched units txd

Maternity % of xmatched blood txd

Understanding C:T Ratio

- How far away is maternity from Transfusion Lab?
- Are units being issued upfront for high risk woman with antibodies only?
- Are units being issued upfront when are EI able?
- How many units issued and transfused in MOHs?
- How many are 2 units?
- A high C:T ratio or appropriate transfusion?