

BSMS, VANESA and Platelets for LoPAG Champions

Clare Denison
BSMS – Lead Specialist
Friday 18th Jan 2019

What am I going to cover:

- What is BSMS?
- What is VANESA?
 - How to use VANESA
 - Data versus Information
- Reports available on VANESA / produced by BSMS
 - Interpretation of the data / information



What is BSMS?

- Established in 2001
- **Aim: To understand and improve inventory management across the supply chain**
- Current participation:
 - NHSBT and supplied hospitals
 - WBS and supplied hospitals
 - NIBTS and supplied hospitals
 - Some hospitals within EIRE
- Who are we?
 - Sue Cotton (BSMS Manager)- based in Sheffield
 - Me! (Lead Specialist) – based in Tooting
 - Clive Hyam (Data Analyst) – based in Colindale
 - Matt Sharp (Data Analyst) – based in Newcastle
 - Gemma Fawke (PBM/BSMS) – based in Tooting

VANESA – Home Page

NHS Blood Stocks Management Scheme

deni0002 (Administrator) ▼

Home	Adult Red Cell ▼	Adult Platelet ▼	Frozen ▼	Hospital Profile	HTT Audit Report ▼	Transparency Tables ▼	E-Reports ▼	Help
------	------------------	------------------	----------	------------------	--------------------	-----------------------	-------------	------

Your current hospital is

Assign

Hospital Activity Status

Red Cell Stock

Red Cell Wastage

Platelet Wastage

Your current centre is **Tooting**

Assign

Messages and Announcements

Dec 2018 - Non Routine Deliveries Reports for hospitals served by NHSBT are now available and can be accessed via the **E-Reports** tab.

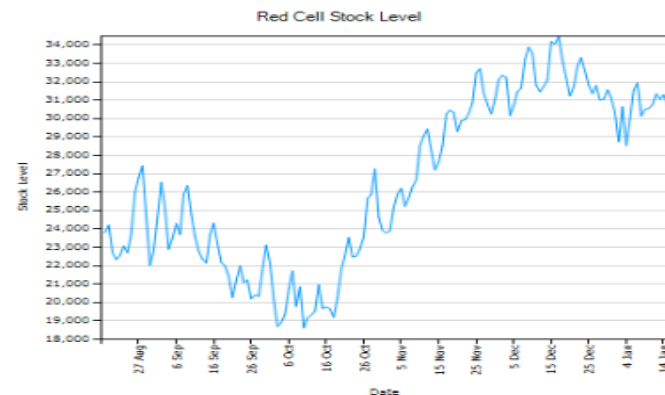
Wednesday, 02 January 2019

VANESA 4 - Monthly O Neg Highlight Report The **Nov 2018** report is now available by selecting the **E - Reports** tab followed by the **Monthly Highlight Report** tab.

Wednesday, 02 January 2019

NHSBT Stock Figures - Tuesday, 15 January 2019

	Red Cells			Platelets
	STOCK	ISI	TARGET	STOCK
O Pos	11266	7	10170	459
O Neg	3193	5.3	3701	167
A Pos	8585	6.4	8479	686
A Neg	3222	8.9	2297	252
B Pos	2887	8.1	2226	94
B Neg	645	5.5	691	42
AB Pos	683	7.3	608	53
AB Neg	250	8.7	231	4
Total	30731	7.2	28403	1757



VANESA – Tab Structure



Blood Stocks Management Scheme

bsms0339 (Administrator) ▼

Home	Adult Red Cell ▼	Adult Platelet ▼	Frozen ▼	Hospital Profile	HTT Audit Report ▼	Transparency Tables ▼	E-Reports ▼	Help
------	------------------	------------------	----------	------------------	--------------------	-----------------------	-------------	------

Data Entry ▼

Data Analysis ▼

Hospital Graphical Display

Hospital Data Display

Centre Graphical Display

Centre Data Display

Your current hospital is

Your current centre is Coli

Assign

Hospital Activity Status

Red Cell
Stock

Red Cell
Wastage

Platelet
Wastage

VANESA – Activity Status

Home	Adult Red Cell ▼	Adult Platelet ▼	Frozen ▼	Hospital Profile	HTT Audit Report ▼	Transparency Tables ▼	E-Reports ▼	Help
------	---------------------	---------------------	----------	---------------------	-----------------------	--------------------------	-------------	------

Your current hospital

Assign

Hospital Activity Status



VANESA – Messages



Blood Stocks Management Scheme

bsms0339 (Administrator) ▼

Home	Adult Red Cell ▼	Adult Platelet ▼	Frozen ▼	Hospital Profile	HTT Audit Report ▼	Transparency Tables ▼	E-Reports ▼	Help
------	------------------	------------------	----------	------------------	--------------------	-----------------------	-------------	------

Hospital Activity Status

Your current hospital is :

Assign

Red Cell
Stock

Red Cell
Wastage

Platelet
Wastage

Your current centre is Colindale

Assign

Messages and Announcements

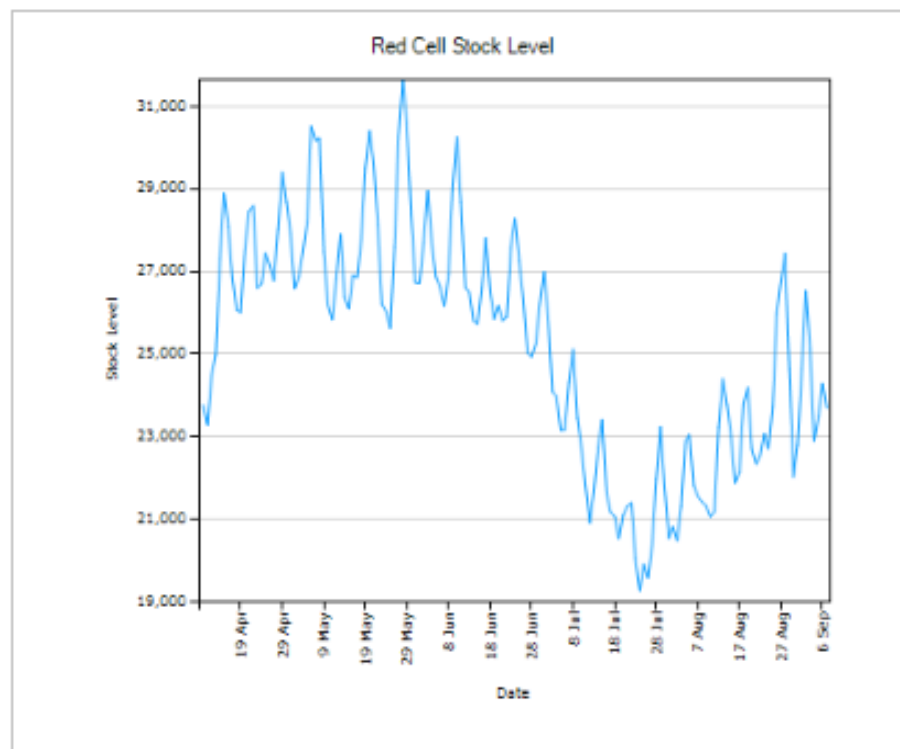
VANESA Quarterly Reports Data reports for Q3 2017-18 are now available, as part of VANESA 4 these reports have been updated in content and now cover Adult FFP as well as Adult Red Cells and Adult Platelets for wastage, issues and top level. These should in future be posted six weeks into the next quarter.

Tuesday, 27 February 2018

VANESA – NHSBT Graph & Data

NHSBT Stock Figures - Friday, 07 September 2018

	Red Cells			Platelets
	STOCK	ISI	TARGET	STOCK
O Pos	7828	4.8	10170	347
O Neg	3329	5.6	3701	96
A Pos	6212	4.5	8479	474
A Neg	3406	9.3	2297	226
B Pos	1763	4.8	2226	102
B Neg	553	4.7	691	43
AB Pos	505	5.1	608	26
AB Neg	98	3	231	12
Total	23694	5.2	28403	1326



VANESA – Help 1



Blood Stocks Management Scheme

bsms0339 (Administrator) ▼

Home	Adult Red Cell ▼	Adult Platelet ▼	Frozen ▼	Hospital Profile	HTT Audit Report ▼	Transparency Tables ▼	E-Reports ▼	Help
------	------------------	------------------	----------	------------------	--------------------	-----------------------	-------------	------

Help

Your current hospital is

Assign

Hospital Activity Status

Red Cell Stock

Red Cell Wastage

Platelet Wastage

Your current centre is Colindale

Assign

Messages and Announcements

VANESA Quarterly Reports Data reports for Q3 2017-18 are now available, as part of VANESA 4 these reports have been updated in content and now cover Adult FFP as well as Adult Red Cells and Adult Platelets for wastage, issues and top level. These should in future be posted six weeks into the next quarter.

Tuesday, 27 February 2018

VANESA – Help 2

Available by clicking tab top right on home page labelled 'Help'

NHS Blood Stocks Management Scheme bsms0339 (Administrator) ▼

Home	Adult Red Cell ▼	Adult Platelet ▼	Frozen ▼	Hospital Profile	HTT Audit Report ▼	Transparency Tables ▼	E-Reports ▼	Help
------	------------------	------------------	----------	------------------	--------------------	-----------------------	-------------	------

Help Page Index

Click on + plus symbol to open further options.

- ☒ Actions
- ☐ Data Entry
 - ☒ Red Cells
 - ...
 - ☒ Platelets
 - ...
 - ☐ Frozen Products
 - ☐ Adult FFP (Fresh Frozen Plasma)
 - ... [Adult FFP Hospital Movements](#)
 - ... [Adult FFP Hospital Wastage](#)

Click to Expand

Link to help page

VANESA Wastage

- As part of optimising stock levels VANESA can show how many and for what reason a hospital wastes components.
- Wastage is collected by reason and these vary by product
- RBC – TIMEX, OTCOL, MISC, FF
- **PLT – MONU, SONU, STEX, WOL, WI, MISC**
- Frozen products – TIMEX, SDL, PTPRO, TTMH, TNTMH, FZF, MISC
- Graphical displays available for RBC and PLT's ONLY
- Data displays available for RBC, PLT and Frozen products

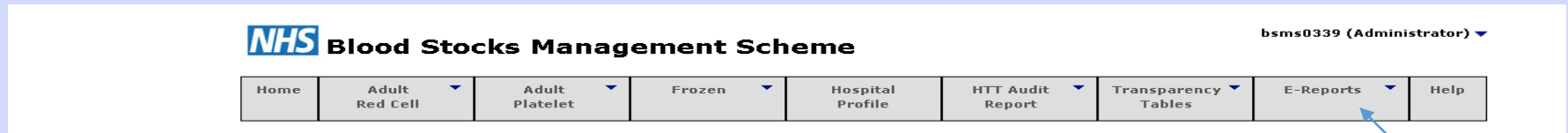
VANESA – Platelet Wastage

- 1) **MONU** Ordered for a medical patient, but then not required and wasted. Procedures such as the insertion of a Hickman line should be included in this category.
- 2) **SONU** Ordered for a surgical patient, but then not required and wasted.
- 3) **STEX** Used by hospitals holding stock that time expires.
- 4) **WOL** Platelets taken from the laboratory and left on the ward/ theatre unused and wasted as a result.
- 5) **WI** Platelets imported from another hospital, sometimes with a patient, but then not used and wasted.
- 6) **MISC** Any other reason, use the comments box to specify.

BSMS VANESA – Data Entry Range

- As a standard user it is possible to enter data for any date in the current month and any date in the previous two months. The exception here is if monthly data entry has been requested in which case data can only be entered on the last day of the month of the previous two months.
- Users can request to become a *poweruser*, by emailing bsms@nhsbt.nhs.uk, which is valid for seven days, and allows data entry over any time period but still with the monthly data entry caveat.

How can VANESA help – E reports



E -Reports

- Quarterly – RTC Report
- Quarterly Red Cell/**Platelet**/FFP – Wastage report
- Quarterly Red Cell/Platelet/FFP – Issues report
- Quarterly Red Cell/**Platelet**/FFP – Top Level report

VANESA – Quarterly RTC Report (Issues)

RTC Quarterly Hospital RBC / Platelet Issues Report

NHSBT

RBC units issued by NHSBT to Hospitals in 2018/19 Q1

O Pos	O Neg	A Pos	A Neg	B Pos	B Neg	AB Pos	AB Neg	All RBC's
126,746	45,453	105,754	28,076	28,342	9,014	7,834	2,700	353,919

Platelets issued by NHSBT to Hospitals in 2018/19 Q1

O Pos	O Neg	A Pos	A Neg	B Pos	B Neg	AB Pos	AB Neg	All PLT's
16,219	4,251	24,704	10,629	3,656	987	1,137	582	62,165

London RTC

Issues from NHSBT for :- 2018/19 Q1

Hospital Details	RBC Issues from NHSBT Centres (VANESA GROSS Issues)									RBC Stock Move	PLT Issues from NHSBT			Move PLTs
Hospital Name	O Pos	O Neg	A Pos	A Neg	B Pos	B Neg	AB Pos	AB Neg	All RBC's	Corrected (NET) * total	A Pos	A Neg	Total	Net Total
Royal Marsden Hospital, Fulham Road	296	133	250	91	47	36	22	20	895		129	50	214	
Kings College Hospital	2,291	1,160	1,395	306	392	374	90	41	6,049		550	252	1,325	
Princess Royal University Hospital,(Farnborough)	495	159	431	123	155	43	32	17	1,455		77	70	198	
Queen Elizabeth Hospital, (Woolwich)	573	218	516	178	138	14	10	0	1,647		29	132	277	
Guy's Hospital	1,031	820	842	219	327	202	9	0	3,450		79	107	310	
The Lewisham Hospital	546	248	332	100	104	63	3	0	1,396		27	83	185	
St. Thomas Hospital	1,124	696	886	236	231	89	54	6	3,322		109	144	467	
St. George's Hospital	1,633	855	1,200	358	526	224	140	27	4,963		187	162	700	
Epsom General Hospital	163	66	151	61	36	24	14	14	529		32	0	78	
Kingston Hospital	498	132	408	109	56	28	18	13	1,262		91	25	227	
Croydon University NHS Trust	359	121	301	66	152	24	50	13	1,086		23	31	136	
St. Helier Hospital	363	131	362	88	94	35	29	23	1,125		91	9	169	
Royal Marsden Hospital, Sutton	301	166	305	70	100	0	33	0	975		290	125	811	
Chase Farm Hospital	80	37	115	25	50	12	21	8	348		1	1	3	
Homerton Hospital	536	349	367	163	156	103	32	0	1,706		2	36	44	
King George Hospital	165	60	204	48	82	37	11	15	622		3	1	14	

Data supplied by Blood Stocks Management Scheme

VANESA – Quarterly RTC Report (Issues)

RTC Comparator NET Quarterly Hospital RBC / Platelet Issues Report

NHSBT

London RTC

Hospital Details	RBC NET Issues for 2018/19 Q1				2017/18 Q1		PLT Net Issues for 2018/19 Q1							2017/18 Q1		
Hospital Name	O Neg	% Change	Total	% Change	O Neg	Total	A Neg	% Change	A Pos	% Change	Total	% Change	A Neg	A Pos	Total	
Royal Marsden Hospital, Fulham Road	133	-13.6%	895	-10.4%	154	999	50	6.4%	129	207.1%	214	6.5%	47	42	201	
Kings College Hospital	1,160	24.7%	6,049	-3.8%	930	6,290	252	-50.4%	550	-35.0%	1,325	-38.3%	508	846	2,146	
Princess Royal University Hospital,(Farnborough)	159	-23.2%	1,455	-16.5%	207	1,742	70	0.0%	77	-57.0%	198	-31.3%	70	179	288	
Queen Elizabeth Hospital, (Woolwich)	218	0.5%	1,647	-9.2%	217	1,813	132	8.2%	29	-53.2%	277	1.5%	122	62	273	
Guy's Hospital	820	51.9%	3,450	20.4%	540	2,866	107	16.3%	79	-16.0%	310	-11.7%	92	94	351	
The Lewisham Hospital	248	4.6%	1,396	4.6%	237	1,334	83	29.7%	27	22.7%	185	60.9%	64	22	115	
St. Thomas Hospital	696	-2.1%	3,322	-0.3%	711	3,332	144	18.0%	109	14.7%	467	-7.0%	122	95	502	
St. George's Hospital	855	47.7%	4,963	-1.5%	571	5,041	162	-7.4%	187	-21.1%	700	-20.9%	175	237	885	
Epsom General Hospital	66	-18.5%	529	-11.5%	81	598	0	-100.0%	32	39.1%	78	-1.3%	7	23	79	
Kingston Hospital	132	-21.0%	1,262	-14.1%	167	1,470	25	316.7%	91	49.2%	227	26.1%	6	61	180	
Croydon University NHS Trust	121	0.0%	1,086	-15.1%	121	1,279	31	-31.1%	23	-50.0%	136	-35.2%	45	46	210	
St. Helier Hospital	131	5.6%	1,125	-8.7%	124	1,232	9	-80.4%	91	37.9%	169	4.3%	46	66	162	
Royal Marsden Hospital, Sutton	166	-19.0%	975	-15.9%	205	1,159	125	-25.1%	290	-21.2%	811	-23.6%	167	368	1,062	
Chase Farm Hospital	37	60.9%	348	22.1%	23	285	1	0.0%	1	N/A	3	-62.5%	1	0	8	
Homerton Hospital	349	4.8%	1,706	-6.8%	333	1,831	36	-10.0%	2	-50.0%	44	-27.9%	40	4	61	
King George Hospital	60	-1.6%	622	-5.3%	61	657	1	0.0%	3	-75.0%	14	-48.1%	1	12	27	
Royal London Hospital	1,233	21.4%	5,267	8.4%	1,016	4,859	154	20.3%	192	178.3%	454	48.9%	128	69	305	
BMI London Independent Hospital	16	60.0%	33	-57.1%	10	71	0	N/A	2	-77.8%	29	81.3%	0	9	16	
Newham University Hospital	155	-14.4%	1,178	-2.9%	181	1,213	55	31.0%	8	N/A	64	4.9%	42	0	61	
North Middlesex Hospital	334	73.1%	2,503	26.5%	193	1,979	98	122.7%	9	-30.8%	154	87.8%	44	13	82	
St. Bartholomew's Hospital	456	22.9%	3,358	22.8%	371	2,735	248	16.4%	488	10.7%	1,422	18.6%	213	441	1,195	

Data supplied by Blood Stocks Management Scheme

VANESA – Quarterly RTC Report (Wastage)

RTC Quarterly Hospital RBC / Platelet Wastage Report

NHSBT

RBC A,B & O units Wasted by NHSBT Hospitals in 2018/19 Q1							
Reason	O Pos	O Neg	A Pos	A Neg	B Pos	B Neg	A,B & O
FF	44	43	55	12	15	8	177
MISC	237	243	160	48	54	21	763
OTCOL	577	425	347	94	96	42	1,581
TIMEX	389	1,098	408	817	421	477	3,610
National	1,247	1,809	970	971	586	548	6,131

Platelets units Wasted by NHSBT Hospitals in 2018/19 Q1									
Reason	O Pos	O Neg	A Pos	A Neg	B Pos	B Neg	AB Pos	AB Neg	All PLT's
MISC	15	3	33	11	7	4	0	3	76
MONU	333	73	330	192	103	32	30	8	1,101
SONU	81	27	92	51	26	3	3	2	285
STEX	155	39	344	256	23	10	9	23	859
WI	1	0	3	3	0	0	0	0	7
WOL	11	2	35	11	1	4	0	0	64
National	596	144	837	524	160	53	42	36	2,392

London RTC

NHSBT Hospital Wastage :- 2018/19 Q1

Only Wastage Data Entered before 03/09/2018 is included in this report

Hospital Details	Hospital RBC Wastage (All Reasons)							RBC WAPI		Waste Entries	Hospital PLT Wastage			PLT WAPI			Waste Entries
	O Pos	O Neg	A Pos	A Neg	B Pos	B Neg	A,B & O	O Neg	A,B & O		A Pos	A Neg	Total	A Pos	A Neg	Total	
Royal Marsden Hospital, Fulham Road								No Data	No Data	No Data				No Data	No Data	No Data	No Data
Kings College Hospital	48	27	25	8	12	10	130	2.3%	2.2%	90	1	1	5	0.2%	0.4%	0.4%	90
Princess Royal University Hospital,(Farnborough)	3	1	8	2	1	0	15	0.6%	1.1%	90	4	4	13	5.2%	5.7%	6.6%	91
Queen Elizabeth Hospital, (Woolwich)								No Data	No Data	No Data				No Data	No Data	No Data	No Data
Guy's Hospital	11	32	14	3	7	0	67	3.9%	1.9%	3	0	4	7	0.0%	3.7%	2.3%	3
The Lewisham Hospital	1	10	6	6	0	0	23	Too Few	Entries	2	0	2	3	Too Few	Too Few	Entries	2
St. Thomas Hospital	58	44	30	10	14	13	169	6.3%	5.2%	3	10	15	44	9.2%	10.4%	9.4%	3
St. George's Hospital								No Data	No Data	No Data				No Data	No Data	No Data	No Data
Epsom General Hospital	3	1	3	1	1	2	11	1.5%	2.2%	3	1	0	4	3.1%	0.0%	5.1%	3
Kingston Hospital	3	2	0	0	0	0	5	Too Few	Entries	1	1	0	3	Too Few	Too Few	Entries	2
Croydon University NHS Trust	20	3	8	11	5	5	52	2.5%	5.1%	3	6	11	32	26.1%	35.5%	23.5%	3

Data supplied by Blood Stocks Management Scheme

VANESA – Hospital Quarterly Issues Report

Hospital Quarterly Platelet Issues Report (Financial Quarters) for 2018/19 Q1

Issues to NHSBT served Hospitals				Average Hospital - Platelet Usage - Very High				Hospitals within London RTC			
Current Quarter	2018/19 Q1	% of Total	% Annual Change	Current Quarter	2018/19 Q1	% of Total	% Annual Change	Current Quarter	2018/19 Q1	% of Total	% Annual Change
All Platelets	62,165		-3.7%	All Platelets	913		-4.6%	All Platelets	16,128		-6.4%
A Pos Platelets	24,704	39.7%	-3.2%	A Pos Platelets	369	40.4%	-3.6%	A Pos Platelets	6,274	38.9%	-6.0%
A Neg Platelets	10,629	17.1%	-2.1%	A Neg Platelets	148	16.2%	-6.1%	A Neg Platelets	3,739	23.2%	-1.2%

Aggregated and Average Platelet Data in Top Section of Report

Current Quarter	All Platelets	PLT % Annual Change	Number A Pos Platelets	% A Pos Platelets	A Pos % Annual Change	Number A Neg Platelets	% A Neg Platelets	A Neg % Annual Change
2018/19 Q1	535	7.2%	204	38.1%	0.5%	79	14.8%	-7.1%

Historical Hospital Platelet Issue Data

Previous Quarters	All Platelets	PLT % Annual Change	Number A Pos Platelets	% A Pos Platelets	A Pos % Annual Change	Number A Neg Platelets	% A Neg Platelets	A Neg % Annual Change
2017/18 Q4	437	-10.5%	184	42.1%	-1.6%	72	16.5%	20.0%
2017/18 Q3	458		189	41.3%		84	18.3%	
2017/18 Q2	483		182	37.7%		106	21.9%	
2017/18 Q1	499		203	40.7%		85	17.0%	
Average Quarter	469		190	40.4%		87	18.4%	

VANESA – Hospital Quarterly Wastage Report

Hospital Quarterly Platelet Wastage Report (Financial Quarters) for 2018/19 Q1

Peer Group :- Platelet Usage - Very High

Number of Hospitals		Number Entering Wastage		% Entering Wastage Data		
38		34		89.5%		
Wastage Quarter	Wastage Reason	All Groups PLT Wastage	A Pos Wastage	A Neg Wastage	All PLT WAPI	Average Total Wastage
2018/19 Q1	MONU	454	149	73	0.7%	13
	SONU	179	54	38	0.3%	5
	STEX	286	93	55	0.5%	8
	MISC	33	15	6	0.1%	1
	WOL	36	19	3	0.1%	1
	WI	4	2	1	0.0%	0
Total or Average Wastage		992	332	176	1.6%	29
% Wastage by Group		100.0%	33.5%	17.7%		

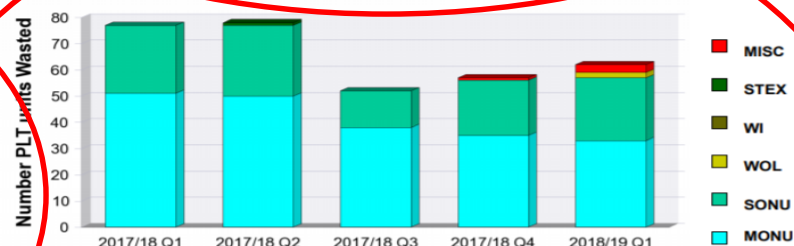
NHSBT Served Hospitals

Number of Hospitals		Number Entering Wastage		% Entering Wastage Data		
255		188		73.7%		
Wastage Quarter	Wastage Reason	All Groups PLT Wastage	A Pos Wastage	A Neg Wastage	All PLT WAPI	% Change from 2017/18 Q1
2018/19 Q1	MONU	1,105	332	192	1.8%	-8.4%
	SONU	285	92	51	0.5%	-26.0%
	STEX	892	354	260	1.4%	-14.3%
	MISC	77	34	11	0.1%	-35.8%
	WOL	64	35	11	0.1%	-41.3%
	WI	7	3	3	0.0%	600.0%
Total or Average Wastage		2,430	850	528	3.9%	-15.1%
% Wastage by Group		100.0%	35.0%	21.7%		

Only Wastage Data Entered before 04/09/2018 is included in Report

Wastage Quarter	Wastage Reason	All Groups PLT Wastage	A Pos Wastage	A Neg Wastage	Wastage Entries	All PLT WAPI
2018/19 Q1	MONU	33	6	4	3	6.2%
	SONU	24	11	10		4.5%
	STEX	0	0	0		0.0%
	MISC	3	3	0		0.6%
	WOL	2	1	0		0.4%
	WI	0	0	0		0.0%
Current Quarter	Total Wastage	62	21	14	3	11.6%
% Wastage by Group		100.0%	33.9%	22.6%		

Historical Hospital Data



Platelet Wastage (Financial Quarters)

2017/18 Q1	2017/18 Q2	2017/18 Q3	2017/18 Q4	2018/19 Q1
2	3	3	3	3
Hospital Wastage Entries made per Quarter				

Data Supplied by the Blood Stocks Management Scheme

VANESA – Hospital Quarterly Top Level Report

Hospital Quarterly Top Level Report (Financial Quarters) for 2018/19 Q1

Average NHSBT Hospital PLT Usage - Very High (NHSBT)

Current Quarter	2018/19 Q1	% of Total	% Annual Change
All Platelets	913		-1.6%
A Pos Platelets	369	40.4%	-1.6%
A Neg Platelets	148	16.2%	-6.1%

Platelet Report

Wastage Quartiles for Platelet Usage - Very High (NHSBT)

	Green	Amber	Red
All Groups Limits	<= 12	> 12 <= 44	> 44
All Groups WAPI	<= 1.5%	> 1.5% <= 5.0%	> 5.0%
A Neg Limits	<= 1	> 1 <= 9	> 9
A Neg WAPI	<= 1.3%	> 1.3% <= 6.0%	> 6.0%

Number of Hospitals 38 % Entering Wastage Data 89.5%

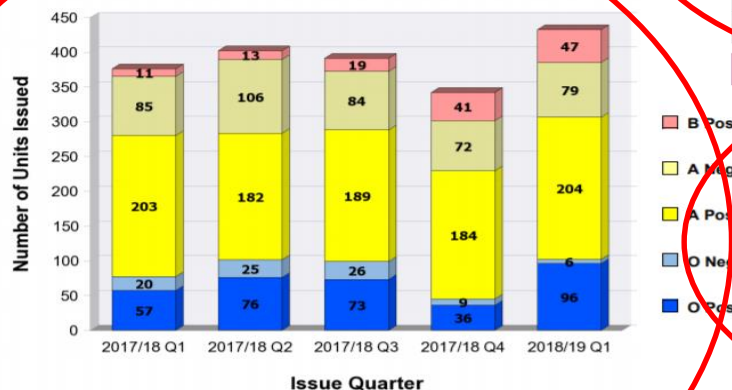
Average NHSBT Hospital - Platelet Usage Very High

Wastage Quarter	Wastage Reason	All Groups	A Neg
2018/19 Q1	MONU	13	2
	SONU	5	1
	Stock TIMEX	8	2
	MISC	1	0
Current Quarter	Total Wastage	29	5

Only Wastage data entered before 04/09/2018 is included in report

Current Quarter	All Platelet Groups	PLT % Annual Change	Number A Neg Platelets	% A Neg Platelets	A Neg % Annual Change
2018/19 Q1	535	7.2%	79	14.8%	-7.1%

Historical Hospital Platelet Net Issue Data



Wastage Quarter	Reason	All Grps Waste	A Neg Waste	All Grps WAPI	A Neg WAPI	Waste Entries
2018/19 Q1	MONU	33	4	6.2%	5.1%	3
	SONU	24	10	4.5%	0.13	
	Stock TIMEX	0	0	0.0%	0.0%	
	MISC	3	0	0.6%	0.0%	
Current Quarter	Total or Avg	62	14	11.6%	7.7%	3

Historical Hospital Platelet Wastage



Data Supplied by the Blood Stocks Management Scheme

Accessing VANESA Wastage Graphs

NHS

Blood Stocks Management Scheme

deni0002 (Administrator) ▼

Home

Adult Red Cell ▼

Data Entry ▼

Data Analysis ▼

Hospital Graphical Display
Hospital Data Display
Centre Graphical Display
Centre Data Display

Adult Platelet ▼

Frozen ▼

Hospital Profile

HTT Audit Report ▼

Transparency Tables ▼

E-Reports ▼

Help

Select from the criteria below

☐ Wastage as a percentage of issue to the hospital

☐ Wastage as a percentage of issue to the hospital (line)

☐ Total issues

☐ Cumulative shelf life stocks

From the start of January ▼ 2019 ▼ to the end of January ▼ 2019 ▼

Neurosurgery
Supplied by Colindale
Paediatric Unit
Haemophilia Unit

> < >> <<

NHSBT Served Hospital
Platelet Usage - Very High

All selected categories ▼

Submit

VANESA – Graphical display page



Blood Stocks Management Scheme

deni0002 (Administrator) ▼

Home	Adult Red Cell ▼	Adult Platelet ▼	Frozen ▼	Hospital Profile	HTT Audit Report ▼	Transparency Tables ▼	E-Reports ▼	Help
------	------------------	------------------	----------	------------------	--------------------	-----------------------	-------------	------

Platelets Hospital Graph Display -

Select from the criteria below

- ☐ Wastage as a percentage of issue to the hospital (bar)
- ☐ Wastage as a percentage of issue to the hospital (line)
- ☐ Total issues
- ☐ Cumulative shelf life stocks

From the start of to the end of

Neurosurgery
Supplied by Colindale
Paediatric Unit
Haemophilia Unit

> < >> <<

NHSBT Served Hospital
Platelet Usage - Very High

All selected categories ▼

Submit



VANESA – Wastage Bar Graph



Blood Stocks Management Scheme

deni0002 (Administrator) ▼

Home	Adult Red Cell ▼	Adult Platelet ▼	Frozen ▼	Hospital Profile	HTT Audit Report ▼	Transparency Tables ▼	E-Reports ▼	Help
------	------------------	------------------	----------	------------------	--------------------	-----------------------	-------------	------

Platelets Hospital Graph Display -

Select from the criteria below

- ☒ Wastage as a percentage of issue to the hospital (bar)
- ☐ Wastage as a percentage of issue to the hospital (line)
- ☐ Total issues
- ☐ Cumulative shelf life stocks

From the start of January ▼ 2018 ▼ to the end of December ▼ 2018 ▼

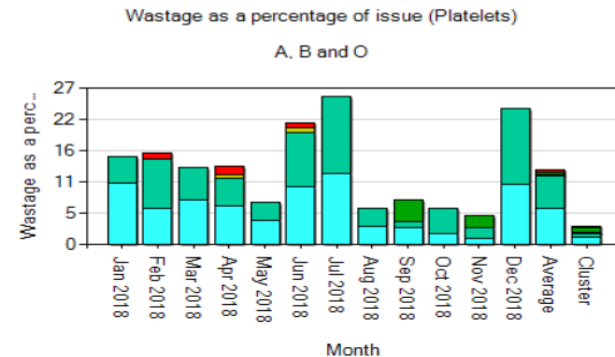
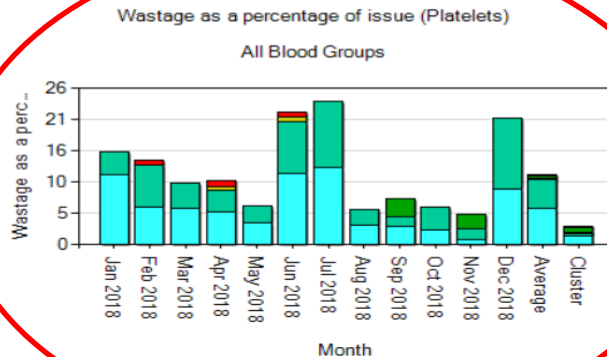
Vascular surgery
Cardio Thoracic Unit
Casualty
Obstetric Unit

> < >> <<

Platelet Usage - Very High
NHSBT Served Hospital

All selected categories ▼

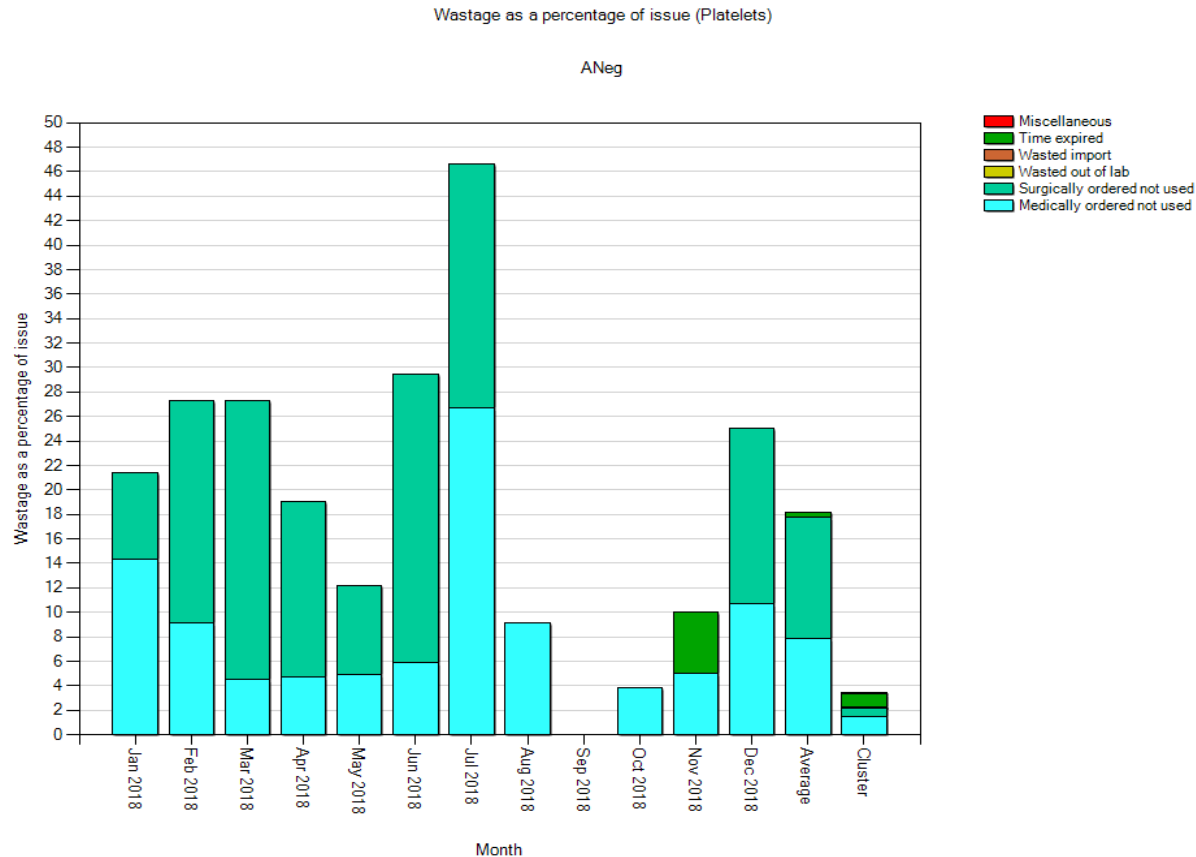
Submit



VANESA – Wastage Bar Graph

Graph type: Wastage as a percentage of issue (Platelets) **Blood group:** ANeg

Cluster: - Platelet Usage - Very High, NHSBT Served Hospital **Cluster count:** 38



VANESA - Transparency



Blood Stocks Management Scheme

deni0002 (Administrator) ▼

Home	Adult Red Cell ▼	Adult Platelet ▼	Frozen ▼	Hospital Profile	HTT Audit Report ▼	Transparency Tables ▼	E-Reports ▼	Help
------	------------------	------------------	----------	------------------	--------------------	-----------------------	-------------	------

Platelets Transparency -

Select from the criteria below

- ☒ Wastage
- ☐ Net issues to the hospital

From the start of January ▼ 2018 ▼ to the end of December ▼ 2018 ▼

Vascular surgery
Cardio Thoracic Unit
Casualty
Obstetric Unit

> < >> <<

NHSBT Served Hospital
London RTC

All selected categories ▼

Submit

Page Size: 25

Filter Text:

Filter Type: Hospital ▼

Apply

Showing 1 - 25 of 49 First | Previous | Next | Last

Blood Service Name	Hospital Name	Total	Total WAPI	Entries
NHSBT	Central Middlesex Hospital	0	0.00	2
NHSBT	Chase Farm Hospital	0	0.00	15
NHSBT	London Bridge Hospital	0	0.00	0
NHSBT	Queen Elizabeth Hospital, (Woolwich)	0	0.00	0
NHSBT	Royal Marsden Hospital, Fulham Road	0	0.00	0
NHSBT	Royal Marsden Hospital, Sutton	0	0.00	3
NHSBT	Royal National Orthopaedic Hospital	0	0.00	0
NHSBT	St. Anthony's Hospital	0	0.00	0
NHSBT	St. Bartholomew's Hospital	13	0.23	5
NHSBT	The Lewisham Hospital	4	0.55	3
NHSBT	Kings College Hospital	39	0.71	361
NHSBT	St. George's Hospital	38	1.27	12
NHSBT	Parkside Hospital	6	1.35	220
NHSBT	King George Hospital	1	1.37	12
NHSBT	Queen's Hospital (Romford)	17	1.43	12
NHSBT	Royal London Hospital	21	1.49	6
NHSBT	Royal Brompton Hospital	22	1.62	11

Wastage Entries
<1 per month =
incomplete data
set



Platelets Stock Holding

Algorithm to guide hospital decision making in holding stock platelets

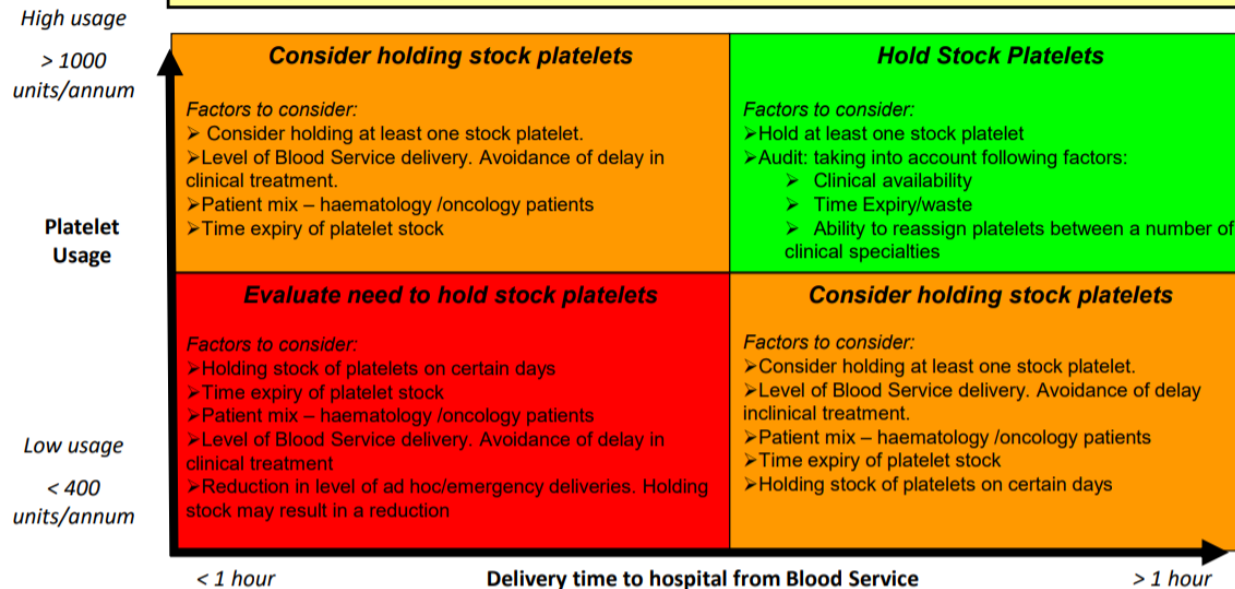
The objective of the algorithm is to guide hospitals in making a decision as to whether to hold stock platelets. Evidence has been collated by the BSMS in 2011 and in 2016.

Specification of emergency platelet stock

It is not necessary to hold A D Negative platelets.

- Units negative for high titre haemagglutinins & non-group O platelets are associated with a lower risk of haemolysis.
- Pooled platelets suspended in PAS would also be expected to reduce the risk of haemolysis.
- Develop practices which maximise the use of ABO and D identical platelets.

It is usually not necessary to specify CMV Negative/Apheresis.



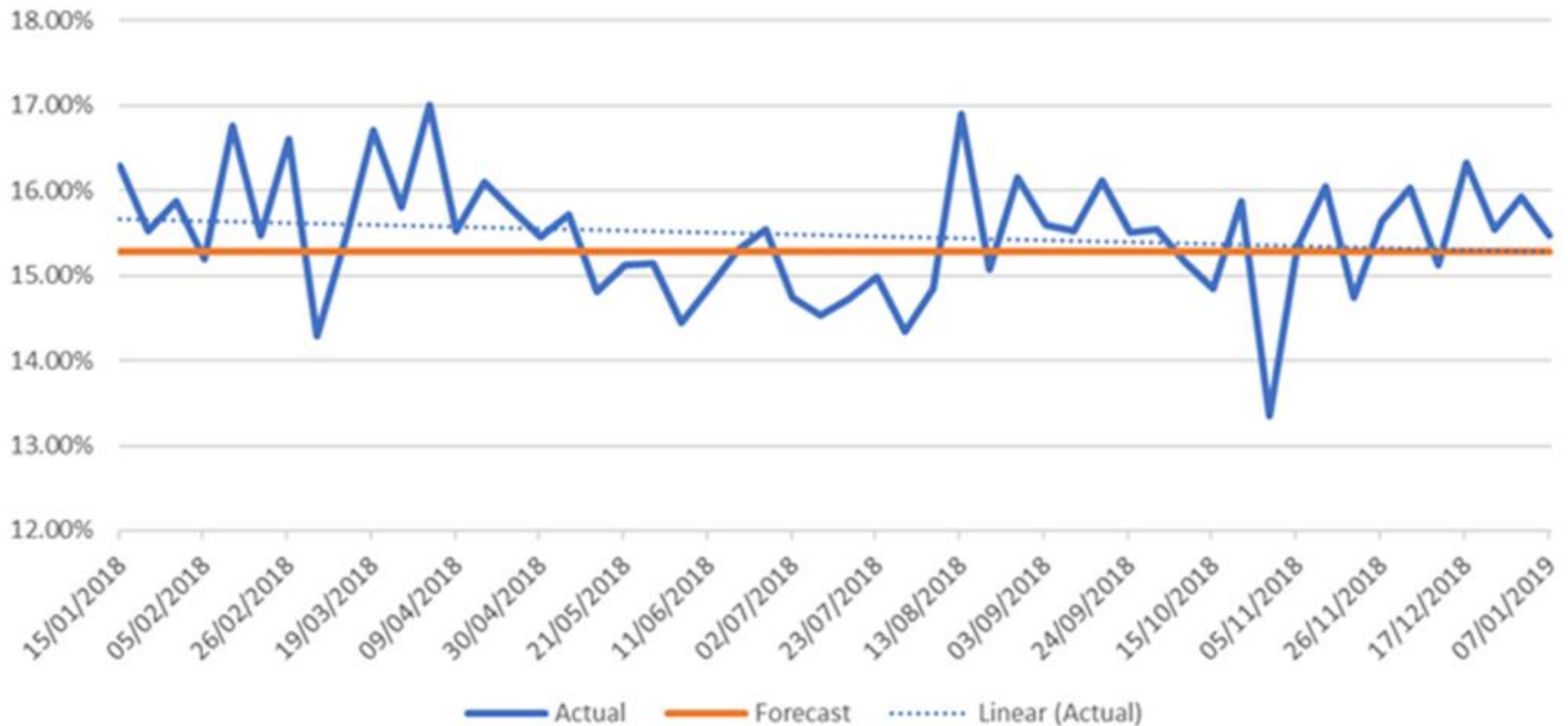
References

- <http://hospital.blood.co.uk/media/28910/appropriate-use-of-platelets-across-blood-groups-final-1-2.pdf>
- <http://www.b-s-h.org.uk/guidelines/guidelines/use-of-platelet-transfusions/>

Blood Stocks Management Scheme V0.1 December 2017

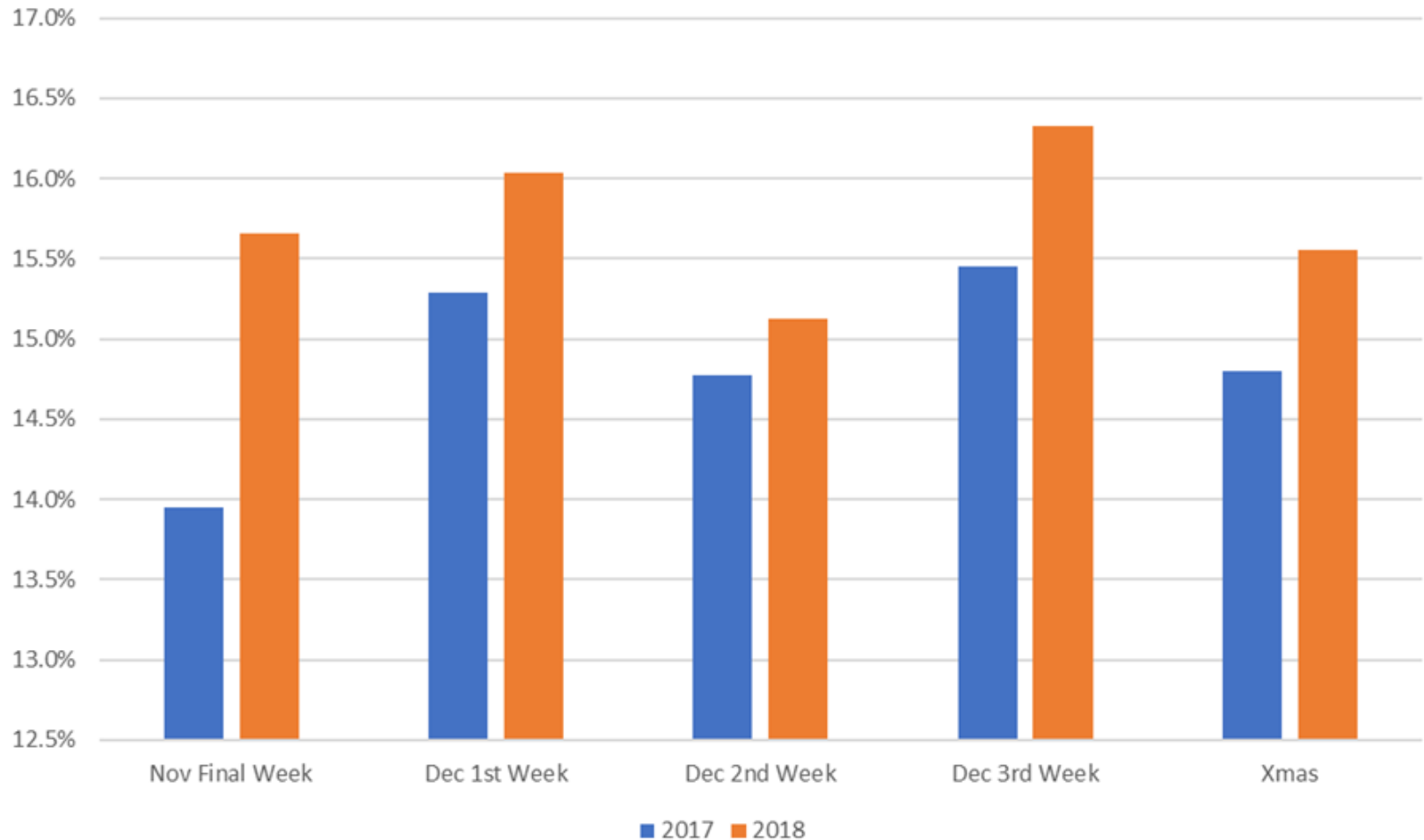
Demand for A Neg Platelets

Chart 4 Platelet % A neg of Total



Demand for A Neg Platelets

Platelet Aneg Demand % 2017 vs 2018 Christmas Period



Other Resources / Info



Blood and Transplant

Conserving the supply of A D Negative platelets

How you can help

Overall demand for platelets continues to reduce, whereas requests for group A D Negative platelets remains high and has resulted in several shortage alerts in the last 12 months.

There are strategies you can implement to help ensure the supply of this group is available for patients when they need it.



BSH Major Haemorrhage addendum, March 2017

If platelets are required before the blood group of the patient is known, group A should be used. D negative platelets should be used for females less than 50 years of age of unknown group.

CHANGED TO

It is acceptable to use ABO-incompatible platelets negative for high titre agglutinins in the management of patients with major haemorrhage.

Did you know...

- ABO-matched platelets give the highest platelet count increment. Major ABO mismatch gives the lowest increment. ⁽¹⁾
- It is not necessary to hold A D Negative platelets as emergency platelet stock.
- Units negative for high titre haemagglutinins & non-group O platelets are associated with a lower risk of haemolysis. ⁽²⁾
- Pooled platelets suspended in PAS would also be expected to reduce the risk of haemolysis. ⁽²⁾



What you can do...

- Develop practices which maximise the use of ABO and D identical platelets.
- Review ordering patterns – only order A D Negative platelets for named patients.
- Review activity and wastage of A D Negative platelets.
- Stock an alternative to A D Negative platelets – contact the BSMS for advice.
- Pilot change in practice.
- Review stock holding using the BSMS algorithm. (<http://www.bloodstocks.co.uk/pdf/platelet-stock-algorithm.pdf>)



References

- (1) Tikatzi DJ et al. The impact of platelet transfusion characteristics on post transfusion platelet increments and clinical bleeding in patients with hypoproliferative thrombocytopenia. • Blood (2012); 119(23):5553-5562
- (2) Estcourt, L. et al. Guidelines for the use of platelet transfusions. • Br J Haematol (2017);176: 365-394
- (3) PHB Bolton-Maggs (Ed) D Poles et al. on behalf of the Serious Hazards of Transfusion (SHOT) Steering Group. • The 2017 Annual SHOT Report (2018)

V1.0_Nov2018

- Posters
- Bookmarks
- Audit Templates
- LoPAG Top Ten Tips

<http://hospital.blood.co.uk/patient-services/patient-blood-management/platelet-resources/>

BSMS Annual Report 2017/18

NHSBT Hospital Blood Supply Chain 2017/18

Red Cell Demand

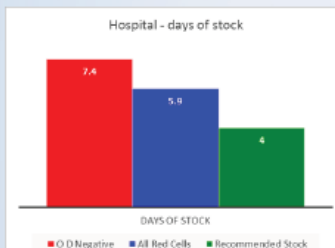
- Demand for red cells has reduced by 5.1%, ending 2017/18 at 1,445,400 units.
- Demand for O D Negative red cells has reduced by 3.1%, ending 2017/18 at 176,300 units.

Demand for O D Negative red cells currently make up 12.1% of the total demand (approximately 7% in general population).

A shortage of Ro red cells for patients with sickle cell disease is driving the substitution of Ro red cells for O D Negative red cells. A growth in demand for Ro red cells has been seen in the last few years.

Red Cells held by hospitals

- Hospitals held an average of 5.9 days of red cell stock.
- The stock of O D Negative red cells held by hospitals was on average 7.4 days.



TOP TIPS

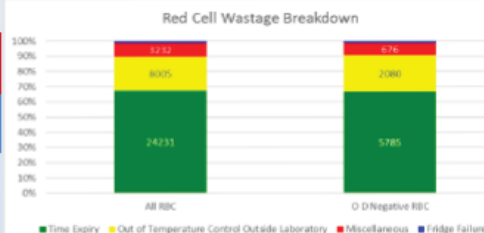
- Hospitals should review their stock levels frequently with a view to decreasing red cell stock to no more than 3/4 days of stock, particularly for O D Negative red cells.
- Hospitals should review the specification of O D Negative emergency units and adhere to the **BSH guidelines for management of major haemorrhage**. It is not necessary to specify C, E Negative, CMV Negative or Sickle Negative red cells.
- O D Negative, K Negative red cells are only required for females < 50 years old.

Red Cell Wastage

35,931 (WAPI* 2.5%) units of red cells were wasted within hospitals. This equates to £4.6m.

8,669 (WAPI* 4.7%) units of O D Negative red cells were wasted within hospitals. This equates to £1.1m.

* Wastage As Percentage of Issues



TOP TIPS

- Nationally 2.5% of red cells and 4.7% of O D Negative red cells are wasted in hospitals. Given the number of warnings of potential shortages issued to hospitals from NHSBT, this amount of wastage should be addressed. Hospitals should set a Key Performance Indicator for wastage. A starting point could be the national wastage as a percentage of issues (WAPI).
- Hospitals should review and implement the **60 minute rule (Change notification 33)**. This has the potential to improve wastage of red cells in the OTCOL category.

Platelet Demand



- Demand from hospitals for platelets has reduced by 1.2%, ending 2017/18 at 258,700 units.
- Demand from hospitals for A D Negative platelets has remained relatively stable during 2017/18 at 39,800 units.
- Demand for A D Negative platelets currently make up 15% of the total demand (approx. 8% in general population).

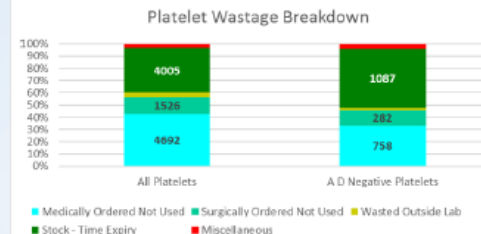
Platelet Wastage

11,013 (WAPI* 4.3%) units of platelets were wasted within hospitals. This equates to approx. £2m.

2,227 (WAPI* 5.3%) units of A D Negative platelets were wasted within hospitals. This equates to £425,000.

WAPI has not changed from 2016-17.

* Wastage As Percentage of Issues



TOP TIPS

- It is not necessary to hold A D Negative platelets as an emergency platelet stock. Hospitals should review and hold groups other than A D Negative.
- It is usually not necessary to specify CMV Negative and/or apheresis for emergency platelet stock.

Frozen Component Wastage

- FFP wastage increased by 21.1% in 2017/18 when compared with 2016/17, ending at 20,514 units.
 - Cryoprecipitate wastage increased by 29.9% in 2017/18 when compared to 2016/17, ending at 1,879 units.
- The majority of wastage occurs when FFP/Cryoprecipitate is thawed and not used (TTMH, TNTMH, PTPRO categories).
- Time expiry of FFP and Cryoprecipitate is minimal.

Note:

The increase in wastage is due to an increased number of hospitals submitting data in 2017/18.

Where can I find out more information?



The BMS website -
<http://www.bloodstocks.co.uk>

The Hospitals and Science website for both platelet resources and O D Negative red cell toolkit -
<http://hospital.blood.co.uk/patient-services/patient-blood-management/>

A practical guide for the haematological management of major haemorrhage -
<https://b-s-h.org.uk/guidelines/guidelines/haematological-management-of-major-haemorrhage/>

60 minute rule (Change notification 33) -
<https://www.transfusionguidelines.org/red-book/change-notifications>

Any queries please contact bsms@nhsbt.nhs.uk

Learning Points

Specification of emergency platelet stock

It is not necessary to hold A D Negative platelets.

Units negative for high titre haemagglutinins & non-group O platelets are associated with a lower risk of haemolysis.

Pooled platelets suspended in PAS would also be expected to reduce the risk of haemolysis.

Develop practices which maximise the use of ABO and D identical platelets.

It is usually not necessary to specify CMV Negative/Apheresis.

Learning Points

- BSH guidance:
 - Best practice ABO/D match
 - Mis-match acceptable: -
 - When urgent or specific requirements necessary
 - To prevent time expiry wastage (reduced risk of haemolysis if negative for HT agglutinins, non group O and if pooled platelets suspended in PAS)
 - D Negative platelets only essential for D negative women of child bearing age.
- Hospitals should hold ABO/D platelet stock to maximise the use of matched platelets.

Learning Points

- Hospitals only holding stock of A D Negative platelets should review use and consider alternative groups.
- Use Data available in VANESA to help guide your stocking practices.
- Ensure wastage data is entered into VANESA regularly.

Acknowledgements

- Clive Hyam (BSMS Data Analyst)
- Sue Cotton (BSMS Manager)

Further Info

- www.bloodstocks.co.uk
- Email; bsms@nhsbt.nhs.uk

Thank you for your attention

