

Transfusion in The Elderly

Dr Philip Kelly

Consultant General and Acute Physician

Departments of Acute Medicine, Diabetes and
Endocrinology

Southend Hospital

Consent

- Aetiology?*
- Bleeding or bled?
- Stable or not?
- What is the need?
- What are the risks?
- Now?
- Alternatives?
- What will I measure?
- What end points?

Acute Medicine, Not...

- Surgical patients
- Sepsis
- ITU
- MI

From: **Outcomes Using Lower vs Higher Hemoglobin Thresholds for Red Blood Cell Transfusion**

JAMA. 2013;309(1):83-84. doi:10.1001/jama.2012.50429

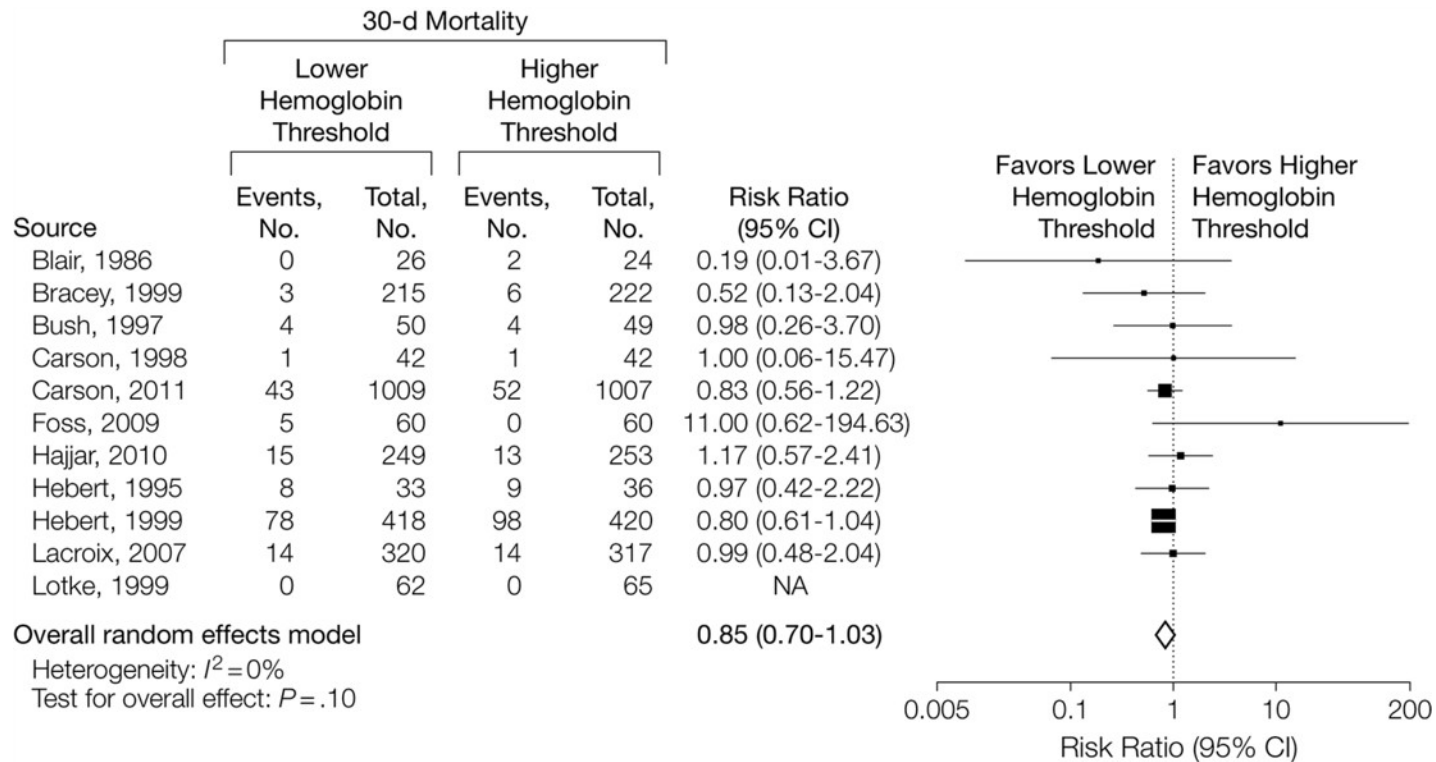


Figure Legend:

30-Day mortality was evaluated in 4975 patients included in 11 of 19 trials. Adapted from Analysis 3.2 in Carson JL, Carless PA, Hebert PC. Transfusion thresholds and other strategies for guiding allogeneic red blood cell transfusion. Cochrane Database Syst Rev. 2012;4:CD002042. doi: 10.1002/14651858.CD002042.pub3

Figure 2.1:
The number of incidents by specialty for the three year period 2010 to 2012
(n=3956)

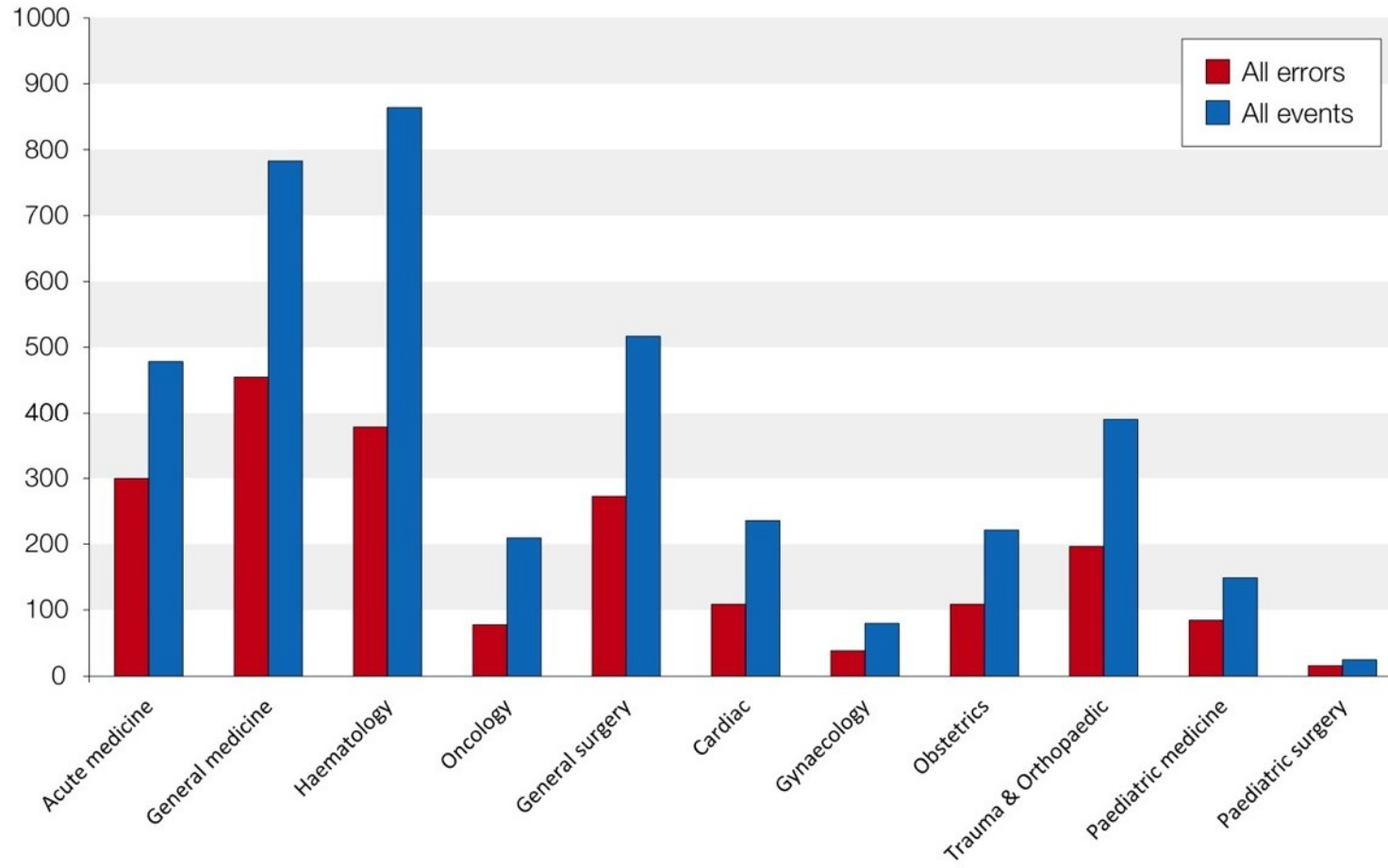
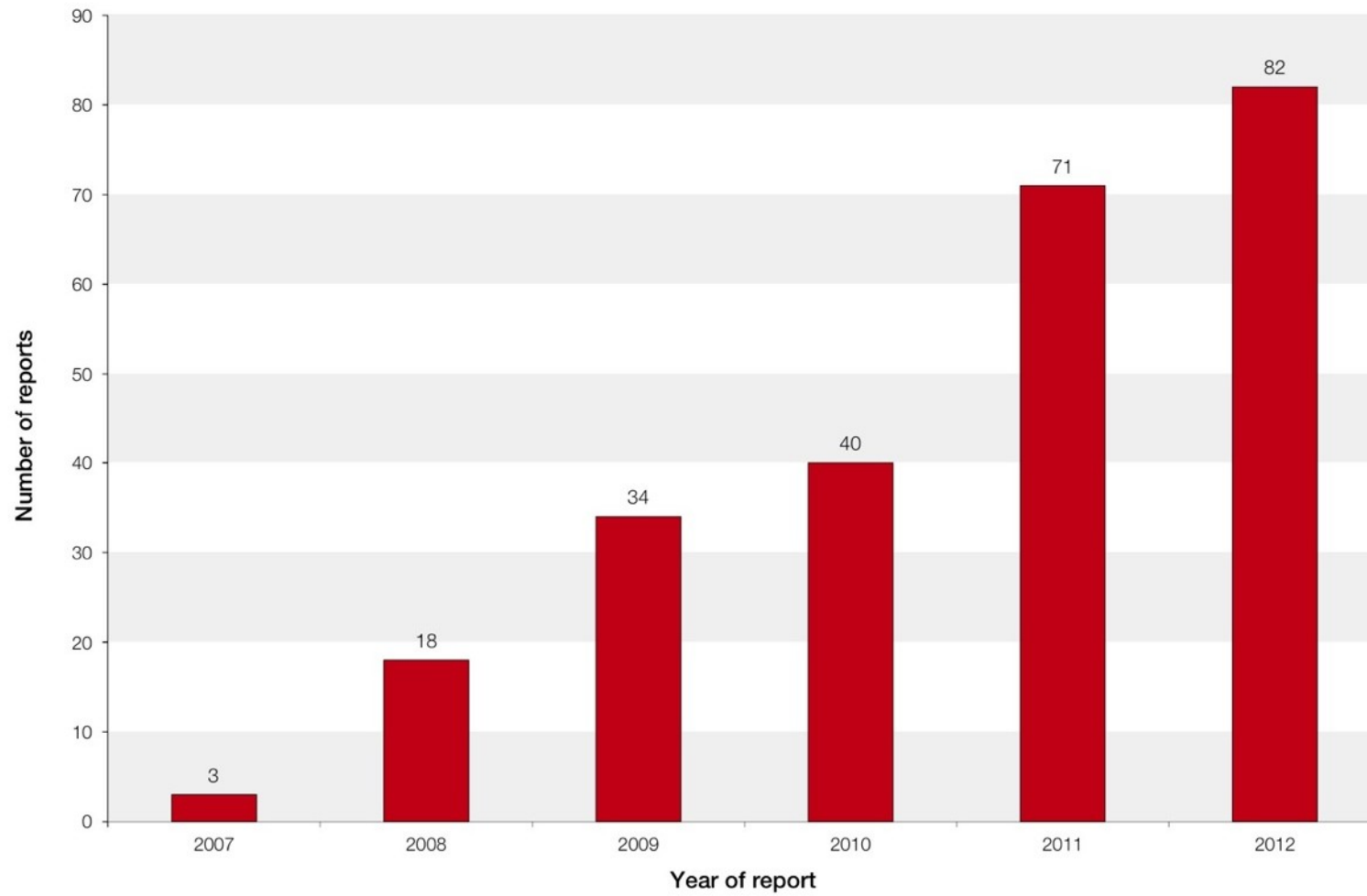
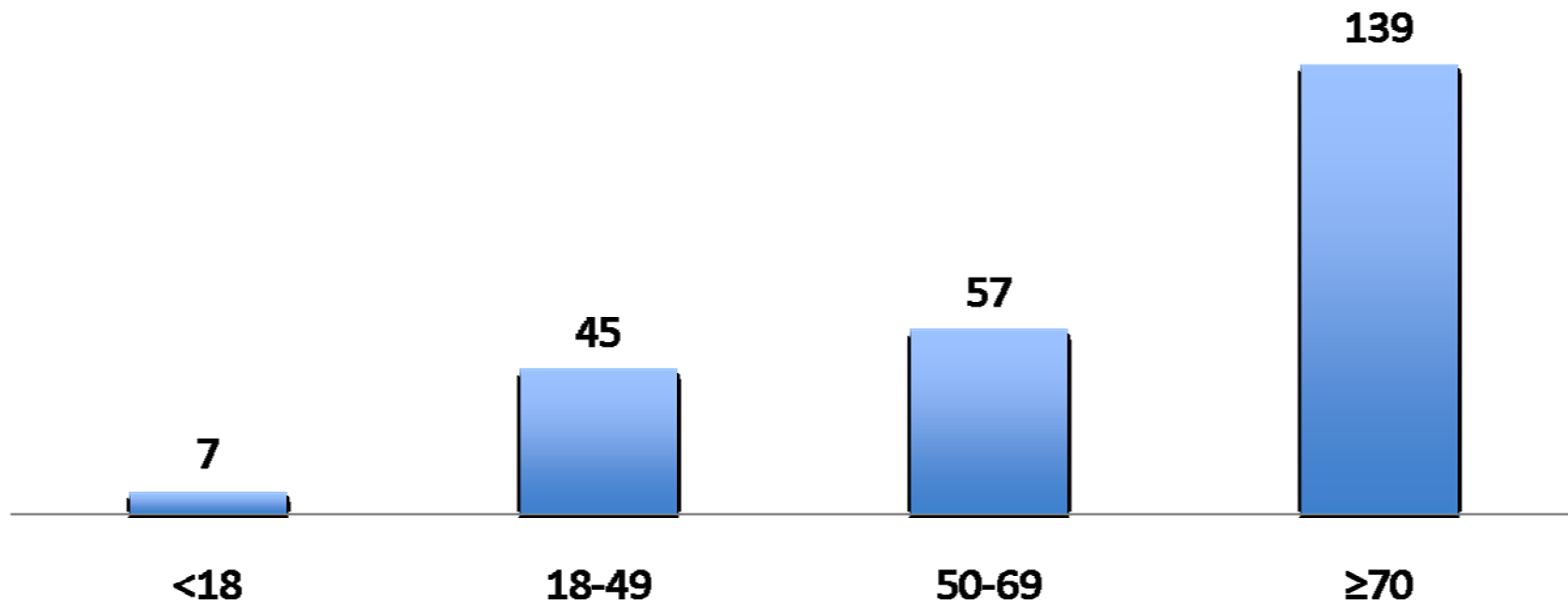


Figure 25.1:
Number of cases of TACO reported to SHOT each year

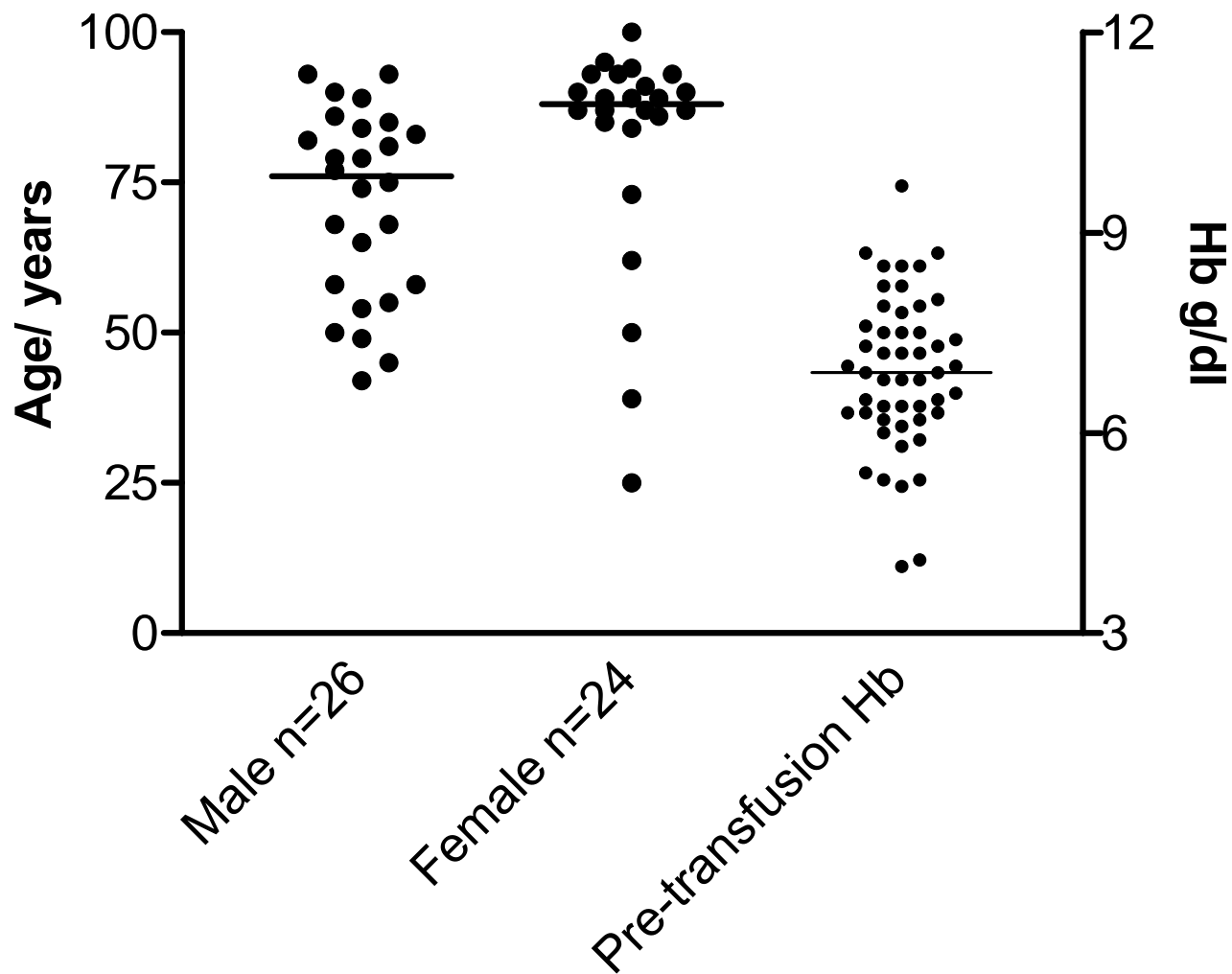


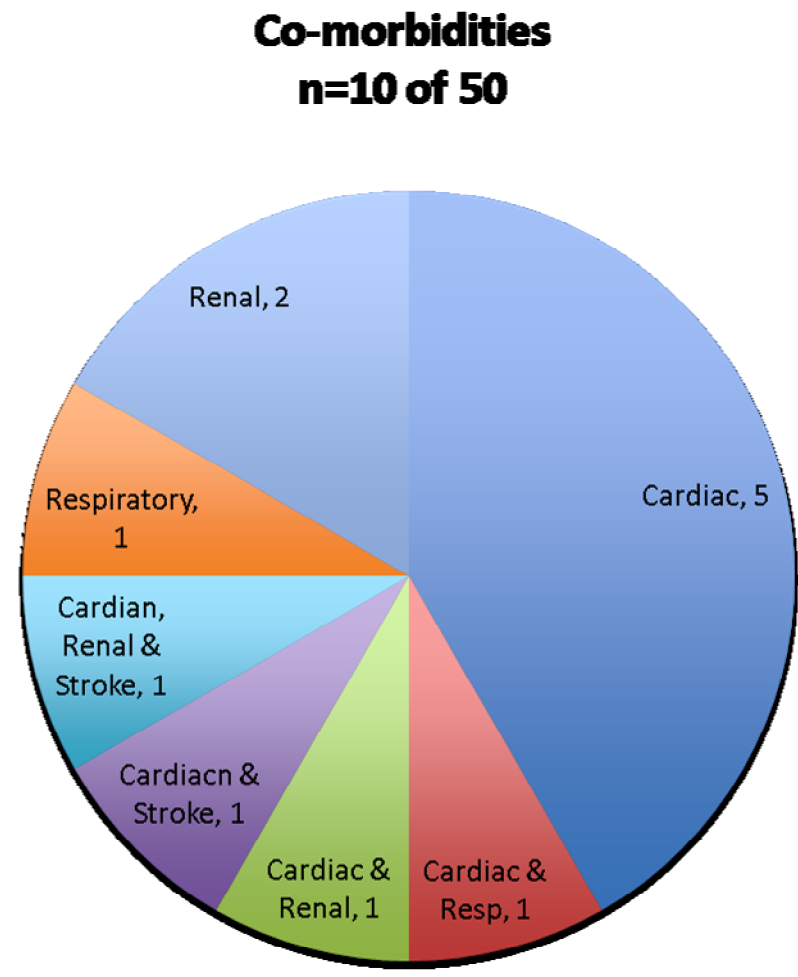
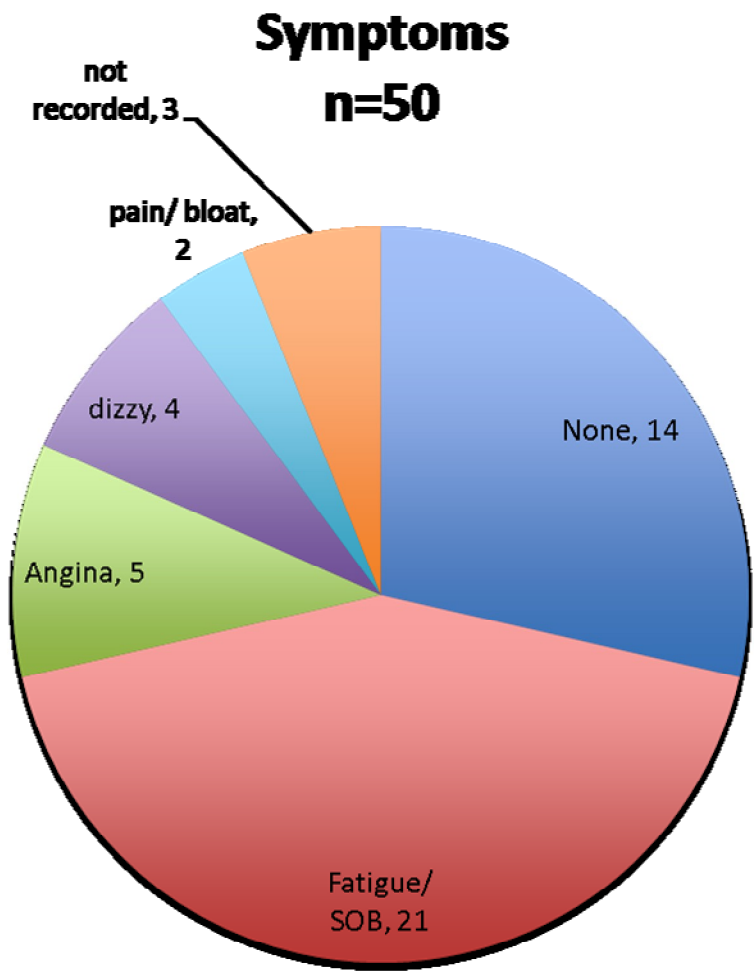
Transfusion Associated Cardiac Overload

**Individual Cases of TACO
Reported between 2007 – 2012
SHOT**

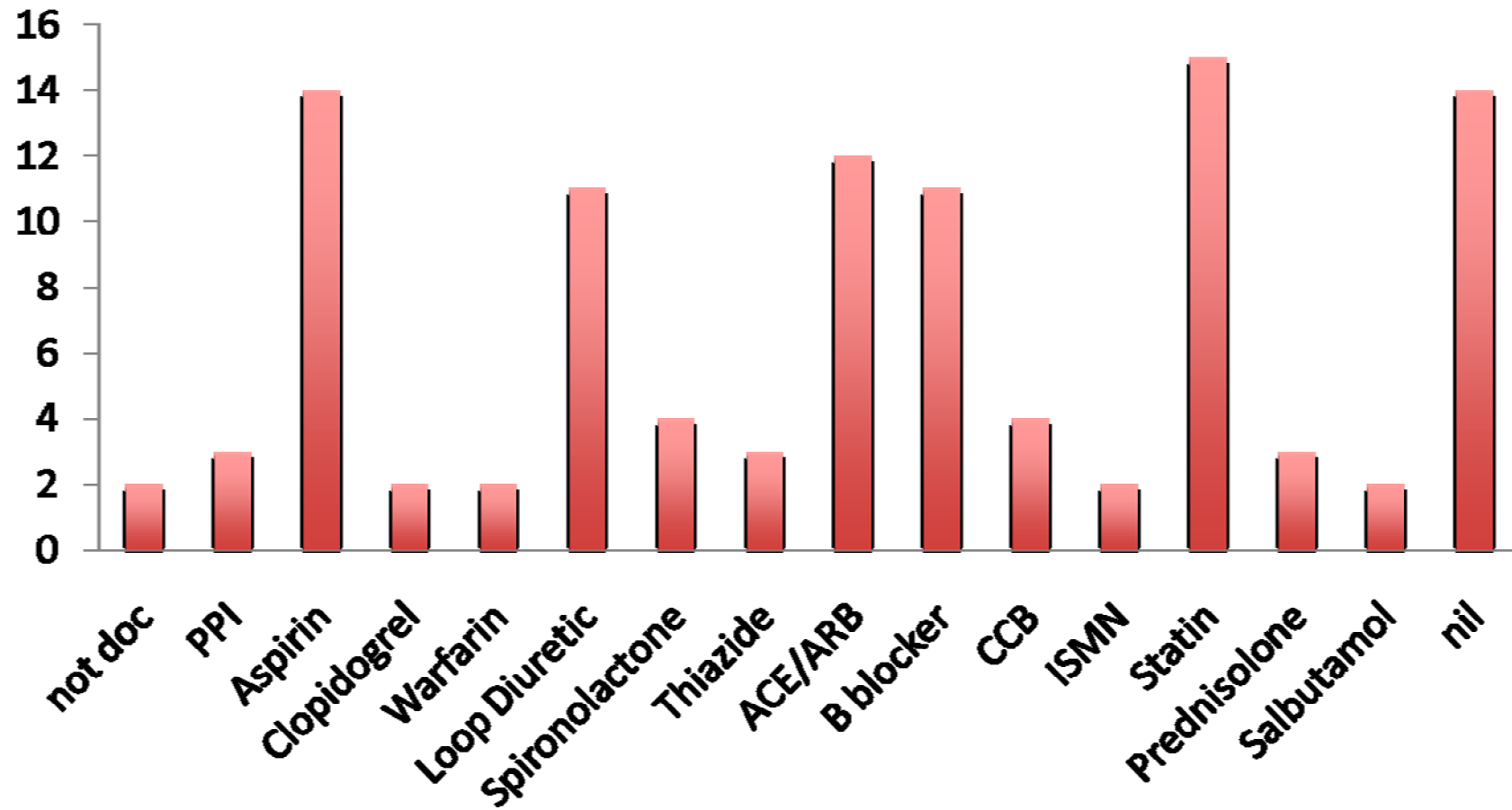


Patient characteristics



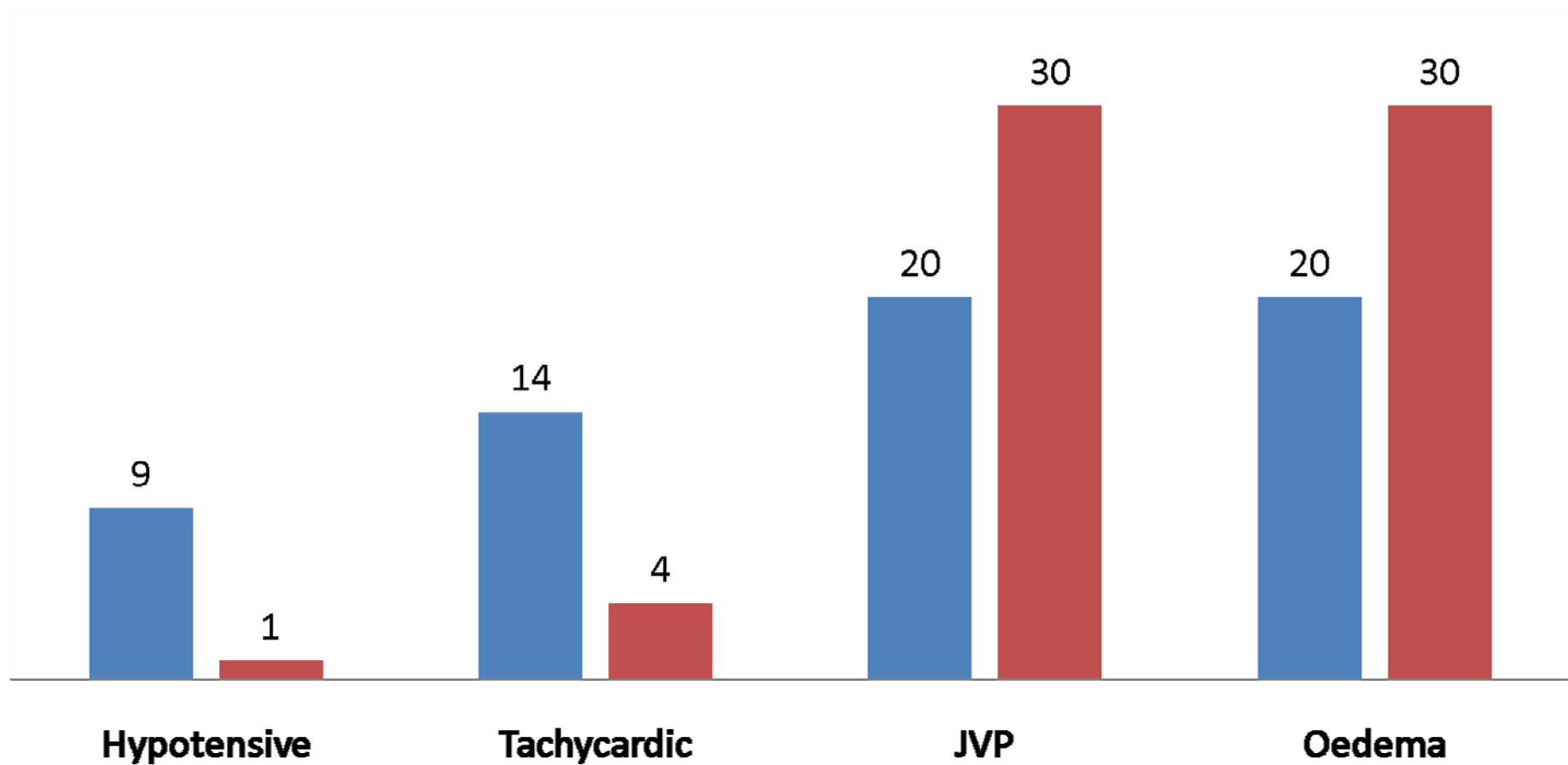


Medications

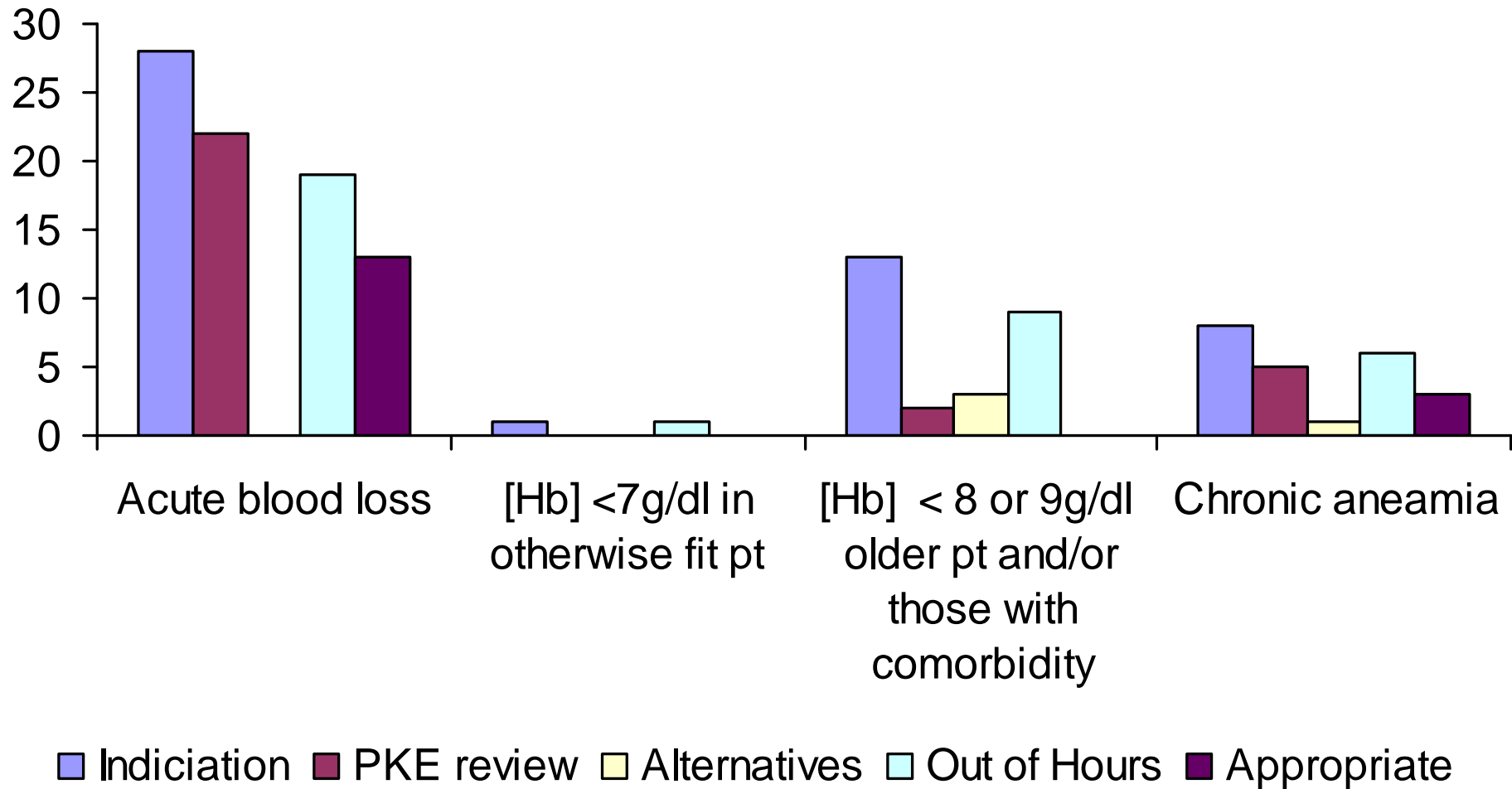


Clinical Examination

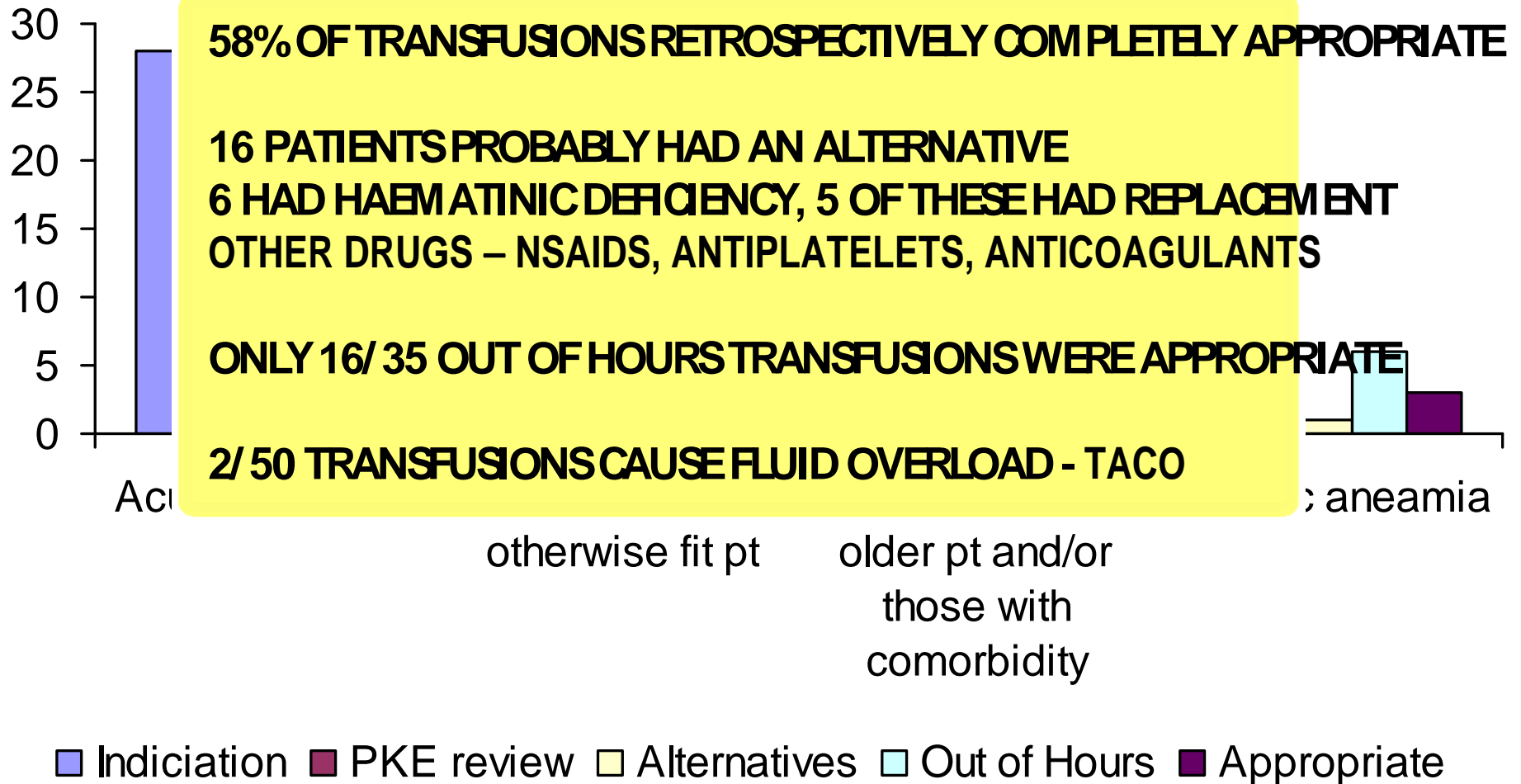
■ Present ■ Not documented



Alternatives & Appropriate out of hours?

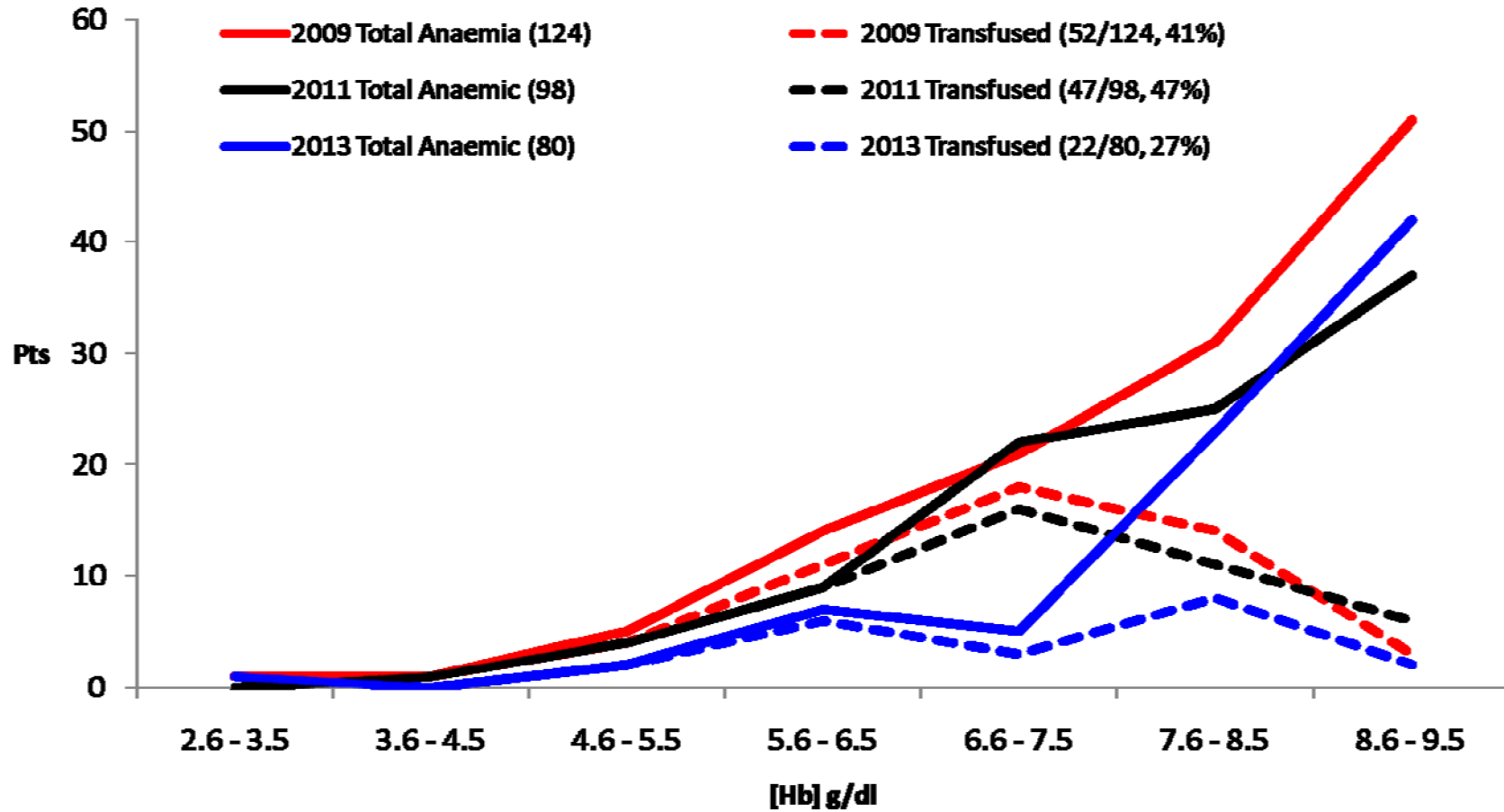


Alternatives & Appropriate out of hours?



Anaemic & Transfused

January to April 2009, 2011, 2013



Where Do You Transfuse?



Marginalize Risk

- Be familiar with the guidelines
- What is the path of least resistance?
- Can you consent the patient?
- What are the alternatives?
- Expect to be challenged?
- Right place & time
- Good Support
- Audit

Conclusions

Patient Blood Management

- Clear Responsibility for the patient
- Make the alternatives easy
- Expect to justify the request
- Best place & time
- Consent
- Support
- Audit

Thanks

- Carol Harvey
- Lesley Hough
- Paul Cervi
- Kimpreet Tithh
- Debra Medina-Jeronimo
- Saba Ahmed